

**AMERICAN
COUNTRY
COUNTDOWN**



ABC Watermark
3575 Cahuenga Blvd. West, #555
Los Angeles, CA 90068
(213) 980-9490

TO: AMERICAN COUNTRY COUNTDOWN SUBSCRIBERS
FROM: ABC WATERMARK
DATE: 3/3/86
RE: LOCAL COMMERCIAL AVAILABILITY

IN THIS WEEK'S AMERICAN COUNTRY COUNTDOWN PROGRAM
#861-10, FOR AIR MARCH 8-9, 1986, THERE IS AN
ADDITIONAL 3½ MINUTES OF LOCAL COMMERCIAL AVAILABILITY.

THERE ARE 30 SECONDS AT C-2 IN HOURS ONE AND FOUR.

THERE ARE 60 SECONDS AT C-5 IN HOUR THREE.

THERE ARE 30 SECONDS AT C-5 IN HOURS ONE, TWO, AND FOUR.



ABC Watermark



FOR WEEK ENDING: 3/8/86
 CYCLE NO. 861 PROGRAM 10 OF 13
 DISC & HALF HOUR NO. 1A PAGE NO. 1

3575 Cahuenga Blvd. W., Suite 555, Los Angeles, CA 90068

ABC Entertainment Radio Network

SCHEDULED START TIME	ACTUAL TIME	ELEMENT	RUNNING TIME
00:00		BILLBOARD: "NOW, AMERICAN COUNTRY COUNTDOWN, BROUGHT TO YOU IN PART BY RAM TOUGH DODGE TRUCKS. AT DODGE, WE DON'T JUST TALK TOUGH, WE PROVE IT!" THEME AND OPENING OF PART I THEME: "MY KIND OF COUNTRY" (MARKWATER MUSIC/BMI) #1 (LW) YOU CAN DREAM OF ME (B) Steve Wariner #40 COME ON IN (YOU DID THE BEST YOU COULD) (A) Oak Ridge Boys LOGO: MY KIND OF COUNTRY, MY KIND OF MUSIC	08:16
08:16		NETWORK SPOT: ^{C-1} Bayer Aspirin/Alka Seltzer Plus (OUT CUE) Voice out cold with... "...use as directed."	30/30
09:16		LOCAL INSERT:	:60
10:16		LOGO: AMERICAN COUNTRY COUNTDOWN #39 LOVE WILL GET YOU THROUGH TIMES WITH NO MONEY (A) Girls Next Door #38 TOMB OF THE UNKNOWN LOVE (A) Kenny Rogers LOGO: MY KIND OF COUNTRY, MY KIND OF MUSIC	08:22
18:38		NETWORK SPOT: ^{C-2} Polaroid (OUT CUE) Voice out cold with... "...while supplies last."	:30
19:08		LOCAL INSERT:	1:30
20:38		LOGO: AMERICAN COUNTRY COUNTDOWN #37 ONE LOVE AT A TIME (B) Tanya Tucker #36 MIAMI, MY AMY (B/A) Keith Whitley LOGO: MY KIND OF COUNTRY, MY KIND OF MUSIC	08:00
28:38		NETWORK SPOT: ^{C-3} Tylenol/Bayer Aspirin (OUT CUE) Voice out cold with... "...and yourself, thank you."	30/30
29:38		LOCAL INSERT:	:60
30:38		STATION I. D.: OVER FOR SIDE 1B	:10

SCHEDULED START TIME	ACTUAL TIME	ELEMENT	RUNNING TIME
30:48		LOGO: AMERICAN COUNTRY COUNTDOWN #35 TONIGHT WE RIDE (B) Michael Martin Murphey #34 THERE'S NO STOPPING YOUR HEART (A/B) Marie Osmond PAPER ROSES (A) Marie Osmond LOGO: MY KIND OF COUNTRY, MY KIND OF MUSIC	10:37
41:25		NETWORK SPOT: ^{C-4} National Potato Board/Polaroid (OUT CUE) Voice out cold with... "...while supplies last."	30/30
42:25		LOCAL INSERT:	:60
43:25		LOGO: AMERICAN COUNTRY COUNTDOWN #33 WORKING WITHOUT A NET (B/A) Waylon Jennings #32 AIN'T MISBEHAVIN' (A) Hank Williams Jr. LOGO: MY KIND OF COUNTRY, MY KIND OF MUSIC	06:32
49:57		NETWORK SPOT: ^{C-5} Pennzoil/Remegel (OUT CUE) Voice out cold with... "...use only as directed."	30/30
50:57		LOCAL INSERT:	:30
51:27		LOGO: AMERICAN COUNTRY COUNTDOWN #31 SHOE STRING (B/A) Mel McDaniel HELLO DARLIN' (B) Conway Twitty	06:08
57:21		THEME UP AND UNDER WITH TALK UNIT ENDING AT: 57:35 THEME TO: 57:50	
57:50		LOCAL INSERT:	2:00
59:50		STATION I. D.:	:10

FORMAT AND COMMERCIAL CLOCK

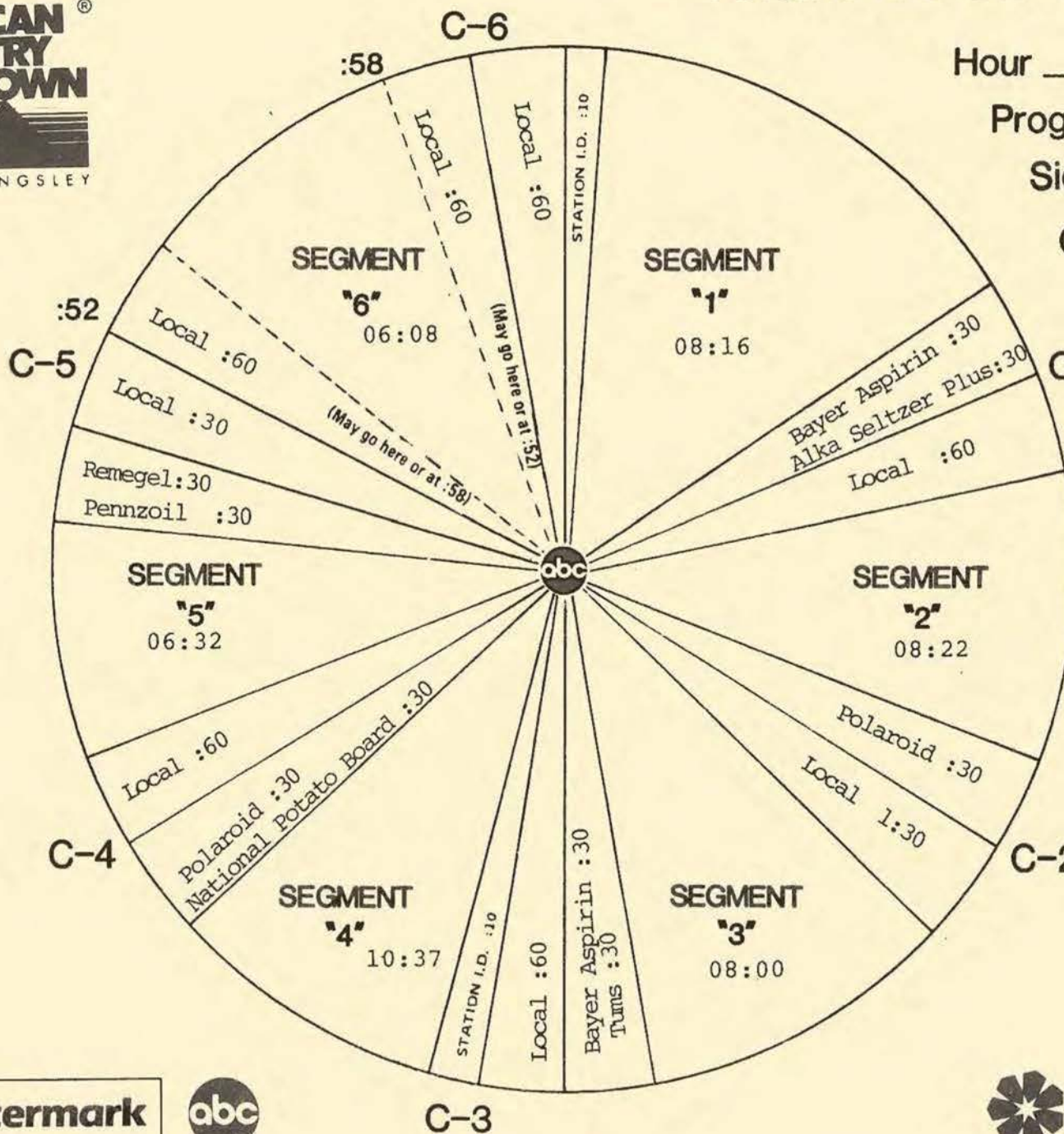


Hour I

Program 861-10

Sides 1A and 1B

Chart Date 3/8/86



Local minutes available 7

Network minutes used 4½

ABC Watermark



ABC Entertainment Radio Network

SCHEDULED START TIME	ACTUAL TIME	ELEMENT	RUNNING TIME
00:00		THEME AND OPENING OF PART II #30 EVERY NIGHT (B) Pake McEntire #29 GRANDPA, TELL ME 'BOU'T THE GOOD OLD DAYS (A) Judds LOGO: MY KIND OF COUNTRY, MY KIND OF MUSIC	08:02
08:02		NETWORK SPOT: C-1 Gingiss/Polaroid (OUT CUE) Voice out cold with... "...while supplies last."	30/30
09:02		LOCAL INSERT:	:60
10:02		LOGO: AMERICAN COUNTRY COUNTDOWN #28 EASY TO PLEASE (B) Janie Fricke PRIDE (B) Janie Fricke LOGO: MY KIND OF COUNTRY, MY KIND OF MUSIC	06:14
16:16		NETWORK SPOT: C-2 Dodge Trucks (OUT CUE) Jingle ends cold after... "...catchin' us now."	:60
17:16		LOCAL INSERT:	:60
18:16		LOGO: AMERICAN COUNTRY COUNTDOWN #27 HEART DON'T FALL NOW (B/A) Sawyer Brown #26 ARLENE (B) Marty Stuart LOGO: MY KIND OF COUNTRY, MY KIND OF MUSIC	07:51
26:07		NETWORK SPOT: C-3 Goodyear/Polaroid (OUT CUE) Voice out cold with... "...while supplies last."	30/30
27:07		LOCAL INSERT:	:60
28:07		STATION I. D.: OVER FOR SIDE 2B	:10

SCHEDULED START TIME	ACTUAL TIME	ELEMENT	RUNNING TIME
28:17		LOGO: AMERICAN COUNTRY COUNTDOWN #25 OKLAHOMA BORDERLINE (B/A) Vince Gill #24 FEELIN' THE FEELIN' (A) Bellamy Bros. LOGO: MY KIND OF COUNTRY, MY KIND OF MUSIC	08:02
36:19		NETWORK SPOT: True Value/Tums (OUT CUE) Voice out cold with... "...use only as directed."	30/30
37:19		LOCAL INSERT:	:60
38:19		LOGO: AMERICAN COUNTRY COUNTDOWN #23 I HAD A BEAUTIFUL TIME (B) Merle Haggard THE ROOTS OF MY RAISING (B) Merle Haggard #22 ONCE IN A BLUE MOON (A) Earl Thomas Conley LOGO: MY KIND OF COUNTRY, MY KIND OF MUSIC	11:26
49:45		NETWORK SPOT: Dodge trucks/Bayer Aspirin (OUT CUE) Voice out cold with... "...and yourself, thank you."	60/30
		LOCAL INSERT:	:30
51:45		LOGO: AMERICAN COUNTRY COUNTDOWN #21 NOTHING BUT YOUR LOVE MATTERS (B) Larry Gatlin & Gatlin Bros. HE LOVE ME ALL THE WAY (B) Tammy Wynette	06:05
57:35		THEME UP AND UNDER WITH TALK UNIT ENDING AT: 57:50 THEME TO: 57:50	
57:50		LOCAL INSERT:	2:00
59:50		STATION I. D.:	:10

FORMAT AND COMMERCIAL CLOCK

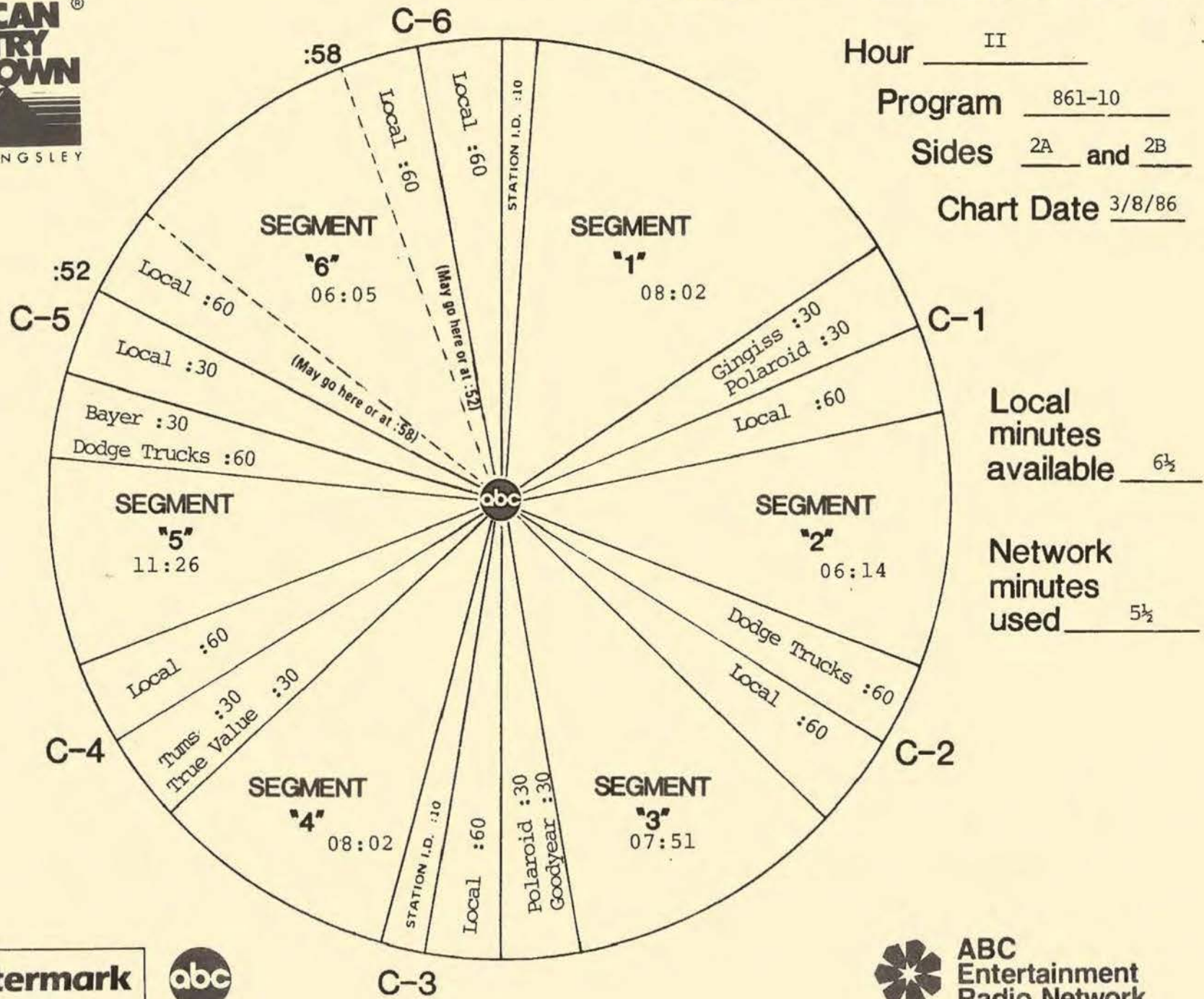


Hour II

Program 861-10

Sides 2A and 2B

Chart Date 3/8/86



ABC Watermark



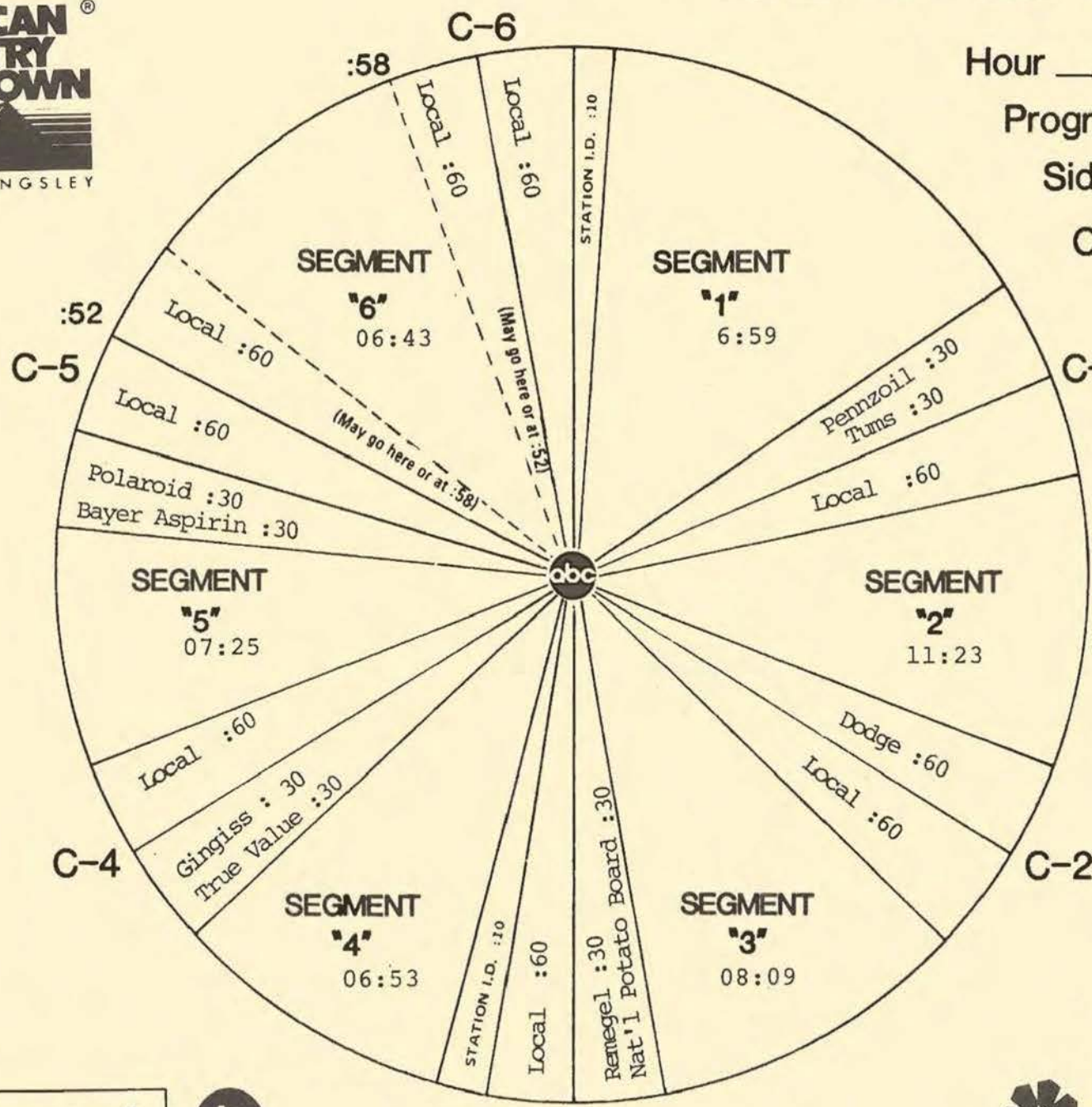
SCHEDULED START TIME	ACTUAL TIME	ELEMENT	RUNNING TIME
00:00		THEME AND OPENING OF PART III #20 PLEASE BE LOVE (A) Mark Gray #19 THE ONE I LOVED BACK THEN (B) George Jones LOGO: MY KIND OF COUNTRY, MY KIND OF MUSIC	06:59
06:59		C-1 NETWORK SPOT: Pennzoil/Tums (OUT CUE) Voice out cold with... "...use only as directed."	30/30
07:59		LOCAL INSERT:	:60
08:59		LOGO: AMERICAN COUNTRY COUNTDOWN #18 NOW AND FOREVER (B/A) Anne Murray #17 SWEETER AND SWEETER (B) Statler Bros. DO YOU REMEMBER THESE (B) Statler Bros. LOGO: MY KIND OF COUNTRY, MY KIND OF MUSIC	11:23
20:22		C-2 NETWORK SPOT: Dodge trucks (OUT CUE) Jingle ends cold with... "...best backed trucks."	:60
21:22		LOCAL INSERT:	:60
22:22		LOGO: AMERICAN COUNTRY COUNTDOWN #16 YOU CAN DREAM OF ME (B) Steve Wariner #15 1983 (B) Randy Travis LOGO: MY KIND OF COUNTRY, MY KIND OF MUSIC	08:09
30:31		C-3 NETWORK SPOT: National Potato Board/Remegel (OUT CUE) Voice out cold with... "...use only as directed."	30/30
31:31		LOCAL INSERT:	:60
32:31		STATION I. D.: OVER FOR SIDE 3B	:10

SCHEDULED START TIME	ACTUAL TIME	ELEMENT	RUNNING TIME
32:41		LOGO: AMERICAN COUNTRY COUNTDOWN #14 YOU'RE SOMETHING SPECIAL TO ME (A) George Strait #13 WE'VE GOT A GOOD FIRE GOIN' (A) Don Williams LOGO: MY KIND OF COUNTRY, MY KIND OF MUSIC	06:53
39:34		NETWORK SPOT: ^{C-4} True Value/Gingiss (OUT CUE) Voice out cold with... "...one nearest you."	30/30
40:34		LOCAL INSERT:	:60
41:34		LOGO: AMERICAN COUNTRY COUNTDOWN #12 IN OVER MY HEART (A) T.G. Sheppard I LOVED 'EM EVERYONE (B) T. G. Sheppard LOGO: MY KIND OF COUNTRY, MY KIND OF MUSIC	07:25
48:59		NETWORK SPOT: ^{C-5} Bayer Aspirin/Polaroid (OUT CUE) Voice out cold with... "...while supplies last."	30/30
49:59		LOCAL INSERT:	:60
50:59		LOGO: AMERICAN COUNTRY COUNTDOWN 11. SHE AND I (A) Alabama WONDER, COULD I LIVE THERE ANYMORE (B) Charley Pride	06:43
57:31		THEME UP AND UNDER WITH TALK UNIT ENDING AT: 57:42 THEME TO: 57:50	
57:50		^{C-6} LOCAL INSERT:	2:00
59:50		STATION I. D.:	:10

FORMAT AND COMMERCIAL CLOCK



Hour III
 Program 861-10
 Sides 3A and 3B
 Chart Date 3/8/86



Local minutes available 7
 Network minutes used 5

ABC Watermark



SCHEDULED START TIME	ACTUAL TIME	ELEMENT	RUNNING TIME
00:00		THEME AND OPENING OF PART IV #10 CAJUN MOON (B) Ricky Skaggs CAN'T YOU HEAR ME CALLIN' (B) Ricky Skaggs LOGO: MY KIND OF COUNTRY, MY KIND OF MUSIC	09:19
09:19		C-1 NETWORK SPOT: Remegel/True Value (OUT CUE) Voice out cold with... "...Pat Summerall sent you."	30/30
10:19		LOCAL INSERT:	:60
11:19		LOGO: AMERICAN COUNTRY COUNTDOWN #9 DREAMLAND EXPRESS (A) John Denver #8 100% CHANCE OF RAIN (A) Gary Morris LOGO: MY KIND OF COUNTRY, MY KIND OF MUSIC	08:56
20:15		C-2 NETWORK SPOT: Goodyear (OUT CUE) Voice out cold with... "...go to Goodyear."	:30
20:45		LOCAL INSERT:	1:30
22:15		LOGO: AMERICAN COUNTRY COUNTDOWN #7 YOUR MEMORY AIN'T WHAT IT USED TO BE (B) Mickey Gilley #6 DON'T UNDERESTIMATE MY LOVE FOR YOU (A/B) Lee Greenwood LOGO: MY KIND OF COUNTRY, MY KIND OF MUSIC	07:11
29:26		C-3 NETWORK SPOT: True Value/Remegel (OUT CUE) Voice out cold with... "...use only as directed."	30/30
30:26		LOCAL INSERT:	:60
31:26		STATION I. D.: OVER FOR SIDE 4B	:10

SCHEDULED START TIME	ACTUAL TIME	ELEMENT	RUNNING TIME
31:36		LOGO: AMERICAN COUNTRY COUNTDOWN #5 YOU SHOULD'VE BEEN GONE BY NOW (A) Eddy Raven BOB WILLS IS STILL THE KING (Wills Story) Waylon Jennings LOGO: MY KIND OF COUNTRY, MY KIND OF MUSIC	08:23
39:59		NETWORK SPOT: ^{C-4} Phillips Petroleum/Polaroid (OUT CUE) Voice out cold with... "...while supplies last."	30/30
40:59		LOCAL INSERT:	:60
41:59		LOGO: AMERICAN COUNTRY COUNTDOWN #4 FAST LANES AND COUNTRY ROADS (B) Barbara Mandrell #3 WHATS A MEMORY LIKE YOU (A) John Schneider LOGO: MY KIND OF COUNTRY, MY KIND OF MUSIC	07:01
49:00		NETWORK SPOT: ^{C-5} Dodge Trucks/Tums (OUT CUE) Voice out cold with... "...use only as directed."	60/30
50:30		LOCAL INSERT:	:30
51:00		LOGO: AMERICAN COUNTRY COUNTDOWN #2 I COULD GET USED TO YOU (B) Exile #1 THINK ABOUT LOVE (A) Dolly Parton CLOSING: "AMERICAN COUNTRY COUNTDOWN HAS BEEN BROUGHT TO YOU IN PART BY BAYER - THE WONDER DRUG THAT WORKS WONDERS, AND BY RAM TOUGH DODGE TRUCKS. AT DODGE, WE DON'T JUST TALK TOUGH, WE PROVE IT."	06:45
56:59		THEME UP AND UNDER WITH TALK UNIT ENDING AT: 57:45	
57:50		THEME TO: 57:50 LOCAL INSERT: <p style="text-align: right;">***** * TOPICAL PROMOS * * LOCATED AT END OF * * SIDE 4B * *****</p>	2:00
59:50		STATION I. D.:	:10

FORMAT AND COMMERCIAL CLOCK

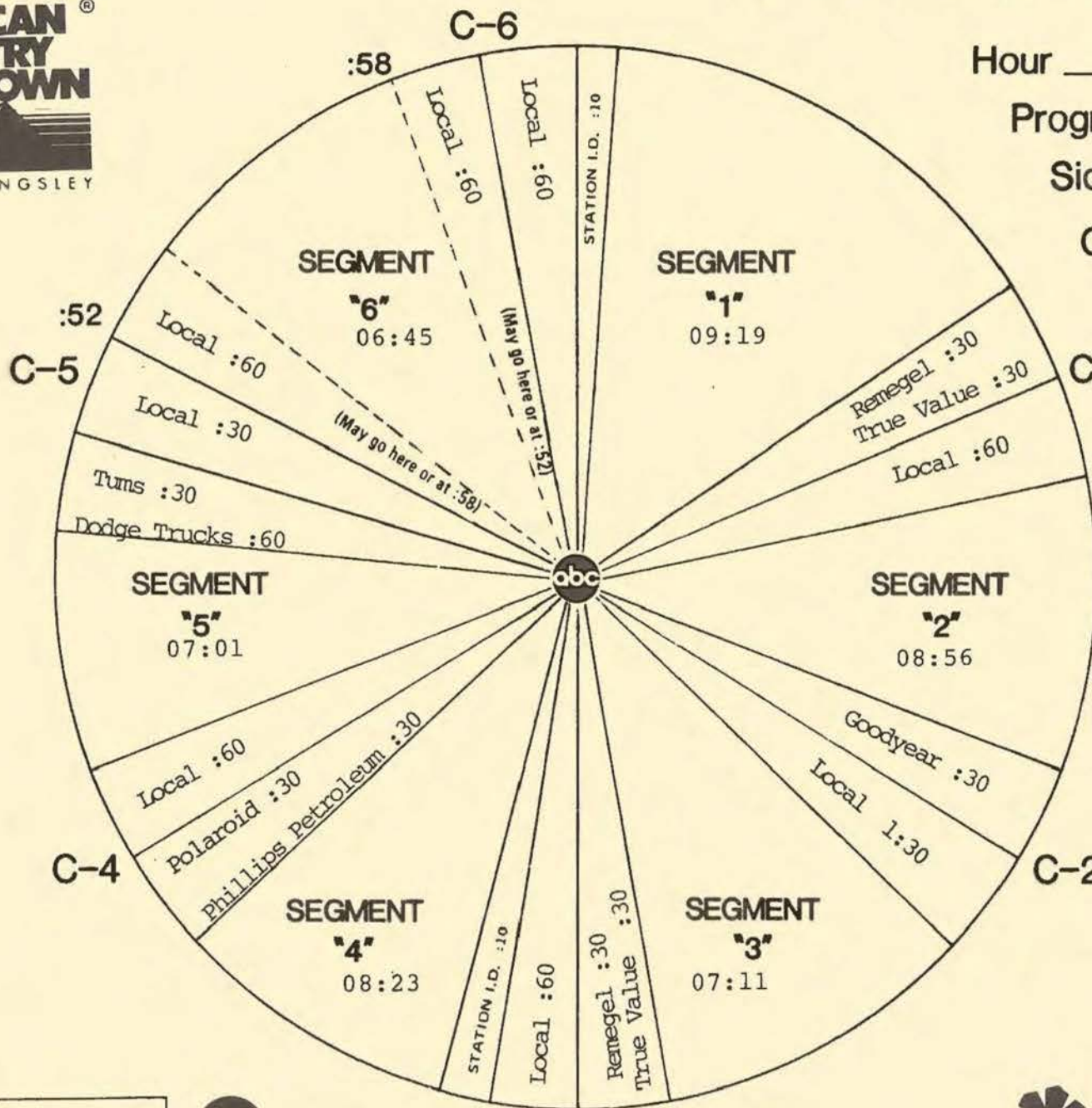


Hour IV

Program 861-10

Sides 4A and 4B

Chart Date 3/8/86



Local minutes available 7

Network minutes used 5

ABC Watermark



ABC Entertainment Radio Network

AMERICAN COUNTRY COUNTDOWN



ABC Watermark
3575 Cahuenga Blvd. West, #555
Los Angeles, CA 90068
(213) 980-9490

TOPICAL PROMOS

ACC PROMOS FOR SHOW #861-10 ARE LOCATED AT THE END OF 4B.

DO NOT USE AFTER 3/9/86

1) STEVE WARINER WRITES OWN HISTORY (:23)

Last week on American Country Countdown, Steve Wariner helped write a new page in his own history...Hi, this is Bob Kingsley...you see Steve co-wrote a song called "YOU CAN DREAM OF ME" which came out on top of Billboard's Country Chart last week. That makes three #1's now for Steve Wariner who hopes to hang on to the top slot this week on American Country Countdown.

2) TWO SUPERSTARS AND SUPERSTAR IN MAKING GOING FOR #1 (:29)

Hi, I'm Bob Kingsley...last week on ACC, Steve Wariner scored his 3rd #1 hit with "YOU CAN DREAM OF ME". But to stay on top this week, he'll have to fight off two superstars and a group of superstars-to-be. Breathing down Steve's neck at #2 is Dolly Parton...who's followed at #3 by Mr. George Jones...and at #4 is one of the hottest groups around...Exile. Find out who's on top of Billboard's chart this week on American Country Countdown.

3) THE ARTISTS TO WATCH THIS (:29)

Hi, I'm Bob Kingsley for American Country Countdown... a look at last week tells you who to look out for on this week's survey. For instance Dolly Parton was at #2 and knockin' at the #1 door...Eddy Raven and Lee Greenwood both made strong moves into the top ten while Janie Fricke and Waylon Jennings tied for fastest movers of the week each taking 8 notch jumps up the chart. Follow their progress and all your favorite stars this week on American Country Countdown!

4) ONLY THREE DEBUTERS (:27)

Hi, I'm Bob Kingsley, on ACC last week a lot of rising and falling records only made room for three debut songs. Now the songs able to muscle their way in were Michael Martin Murphey's "TONIGHT WE RIDE", in at #40...at #39 "WORKING WITHOUT A NET" by Waylon Jennings and the highest debuter at #36 was "GRANDPA" by the Judds. Check out how all these songs are making it this week right here on American Country Countdown!

5) FOUR IN STORE THIS WEEK (:29)

Hello, this is Bob Kingsley...only three songs debuted on ACC last week...but, it looks like four are in store to debut in Billboard's top forty this week. Watch for "AIN'T MISBEHAVIN" to make it for Hank Jr...Keith Whitley's new one called "MIAMI, MY AMY" should come in. "ONE LOVE AT A TIME" for Tanya Tucker plus a newcomer group called the Girls Next Door could debut with "LOVE WILL GET YOU THROUGH TIMES WITH NO MONEY". Find out if they all make it this week on American Country Countdown!



3575 Cahuenga Blvd. W., Suite 555, Los Angeles, CA 90068

ABC Entertainment Radio Network

SCHEDULED START TIME	ACTUAL TIME	ELEMENT	RUNNING TIME
00:00		BILLBOARD: "NOW, AMERICAN COUNTRY COUNTDOWN, BROUGHT TO YOU IN PART BY RAM TOUGH DODGE TRUCKS. AT DODGE, WE DON'T JUST TALK TOUGH, WE PROVE IT!" THEME AND OPENING OF PART I THEME: "MY KIND OF COUNTRY" (MARKWATER MUSIC/BMI) #1 (LW) YOU CAN DREAM OF ME (B) Steve Wariner #40 COME ON IN (YOU DID THE BEST YOU COULD) (A) Oak Ridge Boys LOGO: MY KIND OF COUNTRY, MY KIND OF MUSIC	08:16
08:16		NETWORK SPOT: Bayer Aspirin/Alka Seltzer Plus ^{C-1} (OUT CUE) Voice out cold with... "...use as directed."	30/30
09:16		LOCAL INSERT:	:60
10:16		LOGO: AMERICAN COUNTRY COUNTDOWN #39 LOVE WILL GET YOU THROUGH TIMES WITH NO MONEY (A) Girls Next Door #38 TOMB OF THE UNKNOWN LOVE (A) Kenny Rogers LOGO: MY KIND OF COUNTRY, MY KIND OF MUSIC	08:22
18:38		NETWORK SPOT: Polaroid ^{C-2} (OUT CUE) Voice out cold with... "...while supplies last."	:30
19:08		LOCAL INSERT:	1:30
20:38		LOGO: AMERICAN COUNTRY COUNTDOWN #37 ONE LOVE AT A TIME (B) Tanya Tucker #36 MIAMI, MY AMY (B/A) Keith Whitley LOGO: MY KIND OF COUNTRY, MY KIND OF MUSIC	08:00
28:38		NETWORK SPOT: Tums/Bayer Aspirin ^{C-3} (OUT CUE) Voice out cold with... "...and yourself, thank you."	30/30
29:38		LOCAL INSERT:	:60
30:38		STATION I. D.: OVER FOR SIDE 1B	:10

Handwritten notes in red and blue ink:
A large blue circle containing "27:03"
A large red circle containing "32:03"




SCHEDULED START TIME	ACTUAL TIME	ELEMENT	RUNNING TIME
30:48		LOGO: AMERICAN COUNTRY COUNTDOWN #35 TONIGHT WE RIDE (B) Michael Martin Murphey #34 THERE'S NO STOPPING YOUR HEART (A/B) Marie Osmond PAPER ROSES (A) Marie Osmond LOGO: MY KIND OF COUNTRY, MY KIND OF MUSIC	10:37
41:25		NETWORK SPOT: ^{C-4} National Potato Board/Polaroid (OUT CUE) Voice out cold with... "...while supplies last."	30/30
42:25		LOCAL INSERT:	:60
43:25		LOGO: AMERICAN COUNTRY COUNTDOWN #33 WORKING WITHOUT A NET (B/A) Waylon Jennings #32 AIN'T MISBEHAVIN' (A) Hank Williams Jr. LOGO: MY KIND OF COUNTRY, MY KIND OF MUSIC	06:32
49:57		NETWORK SPOT: ^{C-5} Pennzoil/Remegel (OUT CUE) Voice out cold with... "...use only as directed."	30/30
50:57		LOCAL INSERT:	:30
51:27		LOGO: AMERICAN COUNTRY COUNTDOWN #31 SHOE STRING (B/A) Mel McDaniel HELLO DARLIN' (B) Conway Twitty	06:08
57:21		THEME UP AND UNDER WITH TALK UNIT ENDING AT: 57:35 THEME TO: 57:50	
57:50		LOCAL INSERT:	2:00
59:50		STATION I. D.:	:10

26:03



SCHEDULED START TIME	ACTUAL TIME	ELEMENT	RUNNING TIME
		THEME AND OPENING OF PART II #30 EVERY NIGHT (B) Pake McEntire #29 GRANDPA, TELL ME 'BOUT THE GOOD OLD DAYS (A) Judds LOGO: MY KIND OF COUNTRY, MY KIND OF MUSIC	25:04
		NETWORK SPOT: ^{C-1} Gingiss/Polaroid (OUT CUE) Voice out cold with... "...while supplies last." LOCAL INSERT:	30/30 :60
		LOGO: AMERICAN COUNTRY COUNTDOWN #28 EASY TO PLEASE (B) Janie Fricke PRIDE (B) Janie Fricke LOGO: MY KIND OF COUNTRY, MY KIND OF MUSIC	
		NETWORK SPOT: ^{C-2} Dodge Trucks (OUT CUE) Jingle ends cold after... "...catchin' us now." LOCAL INSERT:	:60 :60
		LOGO: AMERICAN COUNTRY COUNTDOWN #27 HEART DON'T FALL NOW (B/A) Sawyer Brown #26 ARLENE (B) Marty Stuart LOGO: MY KIND OF COUNTRY, MY KIND OF MUSIC	
		NETWORK SPOT: ^{C-3} Goodyear/Polaroid (OUT CUE) Voice out cold with... "...while supplies last." LOCAL INSERT: STATION I. D.: OVER FOR SIDE 2B	30/30 :60 :10



SCHEDULED START TIME	ACTUAL TIME	ELEMENT	RUNNING TIME
		LOGO: AMERICAN COUNTRY COUNTDOWN #25 OKLAHOMA BORDERLINE (B/A) Vince Gill #24 FEELIN' THE FEELIN' (A) Bellamy Bros. LOGO: MY KIND OF COUNTRY, MY KIND OF MUSIC	
		NETWORK SPOT: True Value/Tums (OUT CUE) Voice out cold with... "...use only as directed." LOCAL INSERT:	30/30 :60
		LOGO: AMERICAN COUNTRY COUNTDOWN #23 I HAD A BEAUTIFUL TIME (B) Merle Haggard THE ROOTS OF MY RAISING (B) Merle Haggard #22 ONCE IN A BLUE MOON (A) Earl Thomas Conley LOGO: MY KIND OF COUNTRY, MY KIND OF MUSIC	
		NETWORK SPOT: Dodge trucks/Bayer Aspirin (OUT CUE) Voice out cold with... "...and yourself, thank you." LOCAL INSERT:	60/30 :30
		LOGO: AMERICAN COUNTRY COUNTDOWN #21 NOTHING BUT YOUR LOVE MATTERS (B) Larry Gatlin & Gatlin Bros. HE LOVE ME ALL THE WAY (B) Tammy Wynette THEME UP AND UNDER WITH TALK UNIT ENDING AT: THEME TO: 57:50	
57:50		LOCAL INSERT:	2:00
59:50		STATION I. D.:	:10

SCHEDULED START TIME	ACTUAL TIME	ELEMENT	RUNNING TIME
		THEME AND OPENING OF PART III #20 PLEASE BE LOVE (A) Mark Gray #19 THE ONE I LOVED BACK THEN (B) George Jones LOGO: MY KIND OF COUNTRY, MY KIND OF MUSIC	
		C-1 NETWORK SPOT: Pennzoil/Tums (OUT CUE) Voice out cold with... "...use only as directed." LOCAL INSERT:	30/30 :60
		LOGO: AMERICAN COUNTRY COUNTDOWN #18 NOW AND FOREVER (B/A) Anne Murray #17 SWEETER AND SWEETER (B) Statler Bros. DO YOU REMEMBER THESE (B) Statler Bros. LOGO: MY KIND OF COUNTRY, MY KIND OF MUSIC	
		C-2 NETWORK SPOT: Dodge trucks (OUT CUE) Jingle ends cold with... "...best backed trucks." LOCAL INSERT:	:60 :60
		LOGO: AMERICAN COUNTRY COUNTDOWN #16 YOU CAN DREAM OF ME (B) Steve Wariner #15 1983 (B) Randy Travis LOGO: MY KIND OF COUNTRY, MY KIND OF MUSIC	
		C-3 NETWORK SPOT: National Potato Board/Remegel (OUT CUE) Voice out cold with... "...use only as directed." LOCAL INSERT: STATION I. D.: OVER FOR SIDE 3B	30/30 :60 :10



3575 Cahuenga Blvd. W., Suite 555, Los Angeles, CA 90068

ABC Entertainment Radio Network.

SCHEDULED START TIME	ACTUAL TIME	ELEMENT	RUNNING TIME
		<p style="text-align: right; font-size: 2em; border: 2px solid green; border-radius: 50%; padding: 5px;">23:48</p> <p>LOGO: AMERICAN COUNTRY COUNTDOWN</p> <p>#14 YOU'RE SOMETHING SPECIAL TO ME (A) George Strait</p> <p>#13 WE'VE GOT A GOOD FIRE GOIN' (A) Don Williams</p> <p>LOGO: MY KIND OF COUNTRY, MY KIND OF MUSIC</p>	
		<p style="text-align: center;">C-4</p> <p>NETWORK SPOT: True Value/Gingiss (OUT CUE) Voice out cold with... "...one nearest you."</p> <p>LOCAL INSERT:</p>	30/30 :60
		<p>LOGO: AMERICAN COUNTRY COUNTDOWN</p> <p>#12 IN OVER MY HEART (A) T.G. Sheppard</p> <p>I LOVED 'EM EVERYONE (B) T. G. Sheppard</p> <p>LOGO: MY KIND OF COUNTRY, MY KIND OF MUSIC</p>	
		<p style="text-align: center;">C-5</p> <p>NETWORK SPOT: Bayer Aspirin/Polaroid (OUT CUE) Voice out cold with... "...while supplies last."</p> <p>LOCAL INSERT:</p>	30/30 :60
		<p>LOGO: AMERICAN COUNTRY COUNTDOWN</p> <p>11. SHE AND I (A) Alabama</p> <p>WONDER, COULD I LIVE THERE ANYMORE (B) Charley Pride</p> <p>THEME UP AND UNDER WITH TALK UNIT ENDING AT: THEME TO: 57:50</p>	
57:50		LOCAL INSERT:	2:00
59:50		STATION I. D.:	:10



27:53

SCHEDULED START TIME	ACTUAL TIME	ELEMENT	RUNNING TIME
		THEME AND OPENING OF PART IV #10 CAJUN MOON (B) Ricky Skaggs CAN'T YOU HEAR ME CALLIN' (B) Ricky Skaggs LOGO: MY KIND OF COUNTRY, MY KIND OF MUSIC	
		<p style="text-align: center;">C-1</p> NETWORK SPOT: Remegel/True Value (OUT CUE) Voice out cold with... "...Pat Summerall sent you." LOCAL INSERT:	30/30 :60
		LOGO: AMERICAN COUNTRY COUNTDOWN #9 DREAMLAND EXPRESS (A) John Denver #8 100% CHANCE OF RAIN (A) Gary Morris LOGO: MY KIND OF COUNTRY, MY KIND OF MUSIC	
		<p style="text-align: center;">C-2</p> NETWORK SPOT: Goodyear (OUT CUE) Voice out cold with... "...go to Goodyear." LOCAL INSERT:	:30 1:30
		LOGO: AMERICAN COUNTRY COUNTDOWN #7 YOUR MEMORY AIN'T WHAT IT USED TO BE (B) Mickey Gilley #6 DON'T UNDERESTIMATE MY LOVE FOR YOU (A/B) Lee Greenwood LOGO: MY KIND OF COUNTRY, MY KIND OF MUSIC	
		<p style="text-align: center;">C-3</p> NETWORK SPOT: True Value/Remegel (OUT CUE) Voice out cold with... "...use only as directed." LOCAL INSERT: STATION I. D.: OVER FOR SIDE 4B	30/30 :60 :10



3575 Cahuenga Blvd. W., Suite 555, Los Angeles, CA 90068

ABC Entertainment Radio Network

SCHEDULED START TIME	ACTUAL TIME	ELEMENT	RUNNING TIME
		<p>LOGO: AMERICAN COUNTRY COUNTDOWN</p> <p>#5 YOU SHOULD'VE BEEN GONE BY NOW (A) Eddy Raven</p> <p>BOB WILLS IS STILL THE KING (Wills Story) Waylon Jennings</p> <p>LOGO: MY KIND OF COUNTRY, MY KIND OF MUSIC</p>	<p>28:03</p> <p>25:54 2:27 28:01</p>
		<p>NETWORK SPOT: ^{C-4} Phillips Petroleum/Polaroid (OUT CUE) Voice out cold with... "...while supplies last."</p> <p>LOCAL INSERT:</p>	<p>30/30</p> <p>:60</p>
		<p>LOGO: AMERICAN COUNTRY COUNTDOWN</p> <p>#4 FAST LANES AND COUNTRY ROADS (B) Barbara Mandrell</p> <p>#3 WHATS A MEMORY LIKE YOU (A) John Schneider</p> <p>LOGO: MY KIND OF COUNTRY, MY KIND OF MUSIC</p>	
		<p>NETWORK SPOT: ^{C-5} Dodge Trucks/Tums (OUT CUE) Voice out cold with... "...use only as directed."</p> <p>LOCAL INSERT:</p>	<p>60/30</p> <p>:30</p>
		<p>LOGO: AMERICAN COUNTRY COUNTDOWN</p> <p>#2 I COULD GET USED TO YOU (B) Exile</p> <p>#1 THINK ABOUT LOVE (A) Dolly Parton</p> <p>CLOSING: "AMERICAN COUNTRY COUNTDOWN HAS BEEN BROUGHT TO YOU IN PART BY BAYER - THE WONDER DRUG THAT WORKS WONDERS, AND BY RAM TOUGH DODGE TRUCKS. AT DODGE, WE DON'T JUST TALK TOUGH, WE PROVE IT." THEME UP AND UNDER WITH TALK UNIT ENDING AT: THEME TO: 57:50</p>	
57:50		LOCAL INSERT:	2:00
59:50		STATION I. D.:	:10

LOCK BAND
5 PROMOS **2:27**