

FOR SATELLITE INFO CALL: (212) 887-4414



ABC Watermark



FOR WEEK ENDING: 1/23/88
 CYCLE NO. 881 PROGRAM 4 OF 13
 DISC & HALF HOUR NO. 1A (Backed w/ 4B)
 PAGE NO. 1

3575 Cahuenga Blvd. W., Suite 555, Los Angeles, CA 90068

ABC Entertainment Radio Network

SCHEDULED START TIME	ACTUAL TIME	ELEMENT	RUNNING TIME
00:00		BILLBOARD: "NOW, AMERICAN COUNTRY COUNTDOWN BROUGHT TO YOU IN PART BY BAYER, THE WONDER DRUG THAT WORKS WONDERS. BY NEW MARAGOR DARK ROAST COFFEE, IT'S BURSTING WITH FLAVOR. AND BY CHEVY TRUCK, THE HEARTBEAT OF AMERICA...TODAY'S CHEVY TRUCK." THEME AND OPENING OF PART I THEME: "MY KIND OF COUNTRY" (MARKWATER MUSIC/BMI) #1 (LW) ONE FRIEND Dan Seals (B) #40 TURT IT LOOSE Judds (A) #39 I DIDN'T (EVERY CHANCE I HAD) Johnny Rodriguez (B/A) LOGO: MY KIND OF COUNTRY, MY KIND OF MUSIC	11:53
11:53		C-1 NETWORK SPOT: FOLGERS (OUT CUE) jingle ends cold with... "...in your cup."	:60
12:53		LOCAL INSERT:	:60
13:53		LOGO: AMERICAN COUNTRY COUNTDOWN #38 WILDER DAYS Baillie and the Boys (A) #37 LOUISIANA RAIN John Wesley Ryles (B/A) LOGO: MY KIND OF COUNTRY, MY KIND OF MUSIC	07:13
21:06		C-2 NETWORK SPOT: BAYER/CLOROX 2 (OUT CUE) jingle ends cold with... "...Clorox 2."	30/30
22:06		LOCAL INSERT:	:60
23:06		LOGO: AMERICAN COUNTRY COUNTDOWN #36 TOUCH AND GO CRAZY Lee Greenwood (B/A) #35 LIFE TURNED HER THAT WAY Ricky Van Shelton (B) LOGO: MY KIND OF COUNTRY, MY KIND OF MUSIC	07:07
30:13		C-3 NETWORK SPOT: MRS. PAUL'S/TASTER'S CHOICE (OUT CUE) jingle ends cold with... "...from Taster's Choice."	30/30
31:13		LOCAL INSERT:	:60
32:13		STATION I. D.: OVER FOR SIDE 1B	:10



ABC Watermark



FOR WEEK ENDING: 1/23/88
 CYCLE NO. 881 PROGRAM 4 OF 13
 DISC & HALF HOUR NO. 1B (Backed w/ 3A)
 PAGE NO. 2

3575 Cahuenga Blvd. W., Suite 555, Los Angeles, CA 90068

ABC Entertainment Radio Network

SCHEDULED START TIME	ACTUAL TIME	ELEMENT	RUNNING TIME
32:23		LOGO: AMERICAN COUNTRY COUNTDOWN #34 THE BIRD George Jones (A/B) WALK THROUGH THIS WORLD WITH ME George Jones (B) LOGO: MY KIND OF COUNTRY, MY KIND OF MUSIC	06:52
39:15		C-4 NETWORK SPOT: VIRO-MED/GREYHOUND (OUT CUE) jingle ends cold after... "...driving to us."	30/30
40:15		LOCAL INSERT:	:60
41:15		LOGO: AMERICAN COUNTRY COUNTDOWN #33 SHOULDN'T IT BE EASIER THAN THIS Charley Pride (A) #32 TALKIN' TO MYSELF AGAIN Tammy Wynette (A/B) LOGO: MY KIND OF COUNTRY, MY KIND OF MUSIC	07:22
48:37		C-5 NETWORK SPOT: CHEVROLET/TASTER'S CHOICE/VIRO-MED (OUT CUE) jingle fades after... "...Viro-Med."	:60 30/30
50:37		LOGO: AMERICAN COUNTRY COUNTDOWN #31 SOMEWHERE BETWEEN RAGGED AND RIGHT John Anderson (B) NOBODY LIKES SAD SONGS Ronnie Milsap (B)	07:12
57:42		THEME UP AND UNDER WITH TALK UNIT ENDING AT: 57:49 THEME TO: (:01) 57:50	
57:50		C-6 LOCAL INSERT:	2:00
59:50		STATION I. D.:	:10



ABC Watermark



FOR WEEK ENDING: 1/23/88
 CYCLE NO. 881 PROGRAM 4 OF 13
 DISC & HALF HOUR NO. 2A (Backed w/ 3B)
 PAGE NO. 3

3575 Cahuenga Blvd. W., Suite 555, Los Angeles, CA 90068

ABC Entertainment Radio Network

SCHEDULED START TIME	ACTUAL TIME	ELEMENT	RUNNING TIME
00:00		THEME AND OPENING OF PART II #30 THIS OLD HOUSE S-K-B (B/A) #29 HEAVEN CAN'T BE FOUND Hank Williams Jr. (B) LOGO: MY KIND OF COUNTRY, MY KIND OF MUSIC	08:36
08:36		NETWORK SPOT: MOTEL 6 (OUT CUE) jingle ends cold after... "...light on for ya." LOCAL INSERT:	:60
09:36			:60
10:36		LOGO: AMERICAN COUNTRY COUNTDOWN #28 I CAN'T GET CLOSE ENOUGH Exile (B) #27 SOME OLD SIDE ROAD Keith Whitley (A) LOGO: MY KIND OF COUNTRY, MY KIND OF MUSIC	08:01
18:37		NETWORK SPOT: TRUE VALUE/GREYHOUND (OUT CUE) jingle ends cold after... "...driving to us." LOCAL INSERT:	30/30
19:37			:60
20:37		LOGO: AMERICAN COUNTRY COUNTDOWN #26 THIS MISSIN' YOU HEART OF MINE Sawyer Brown (B/A) #25 ONLY LOVE CAN SAVE ME NOW Crystal Gayle (B/A) LOGO: MY KIND OF COUNTRY, MY KIND OF MUSIC	06:42
27:19		NETWORK SPOT: BAYER/CLOROX 2 (OUT CUE) jingle ends cold with... "...Clorox 2." LOCAL INSERT:	30/30
28:19			:60
29:19		STATION I. D.: OVER FOR SIDE 2B	:10



FOR WEEK ENDING: 1/23/88
 CYCLE NO. 881 PROGRAM 4 OF 13
 DISC & HALF HOUR NO. 2B (Backed w/ 4A)
 PAGE NO. 4

3575 Cahuenga Blvd. W., Suite 555, Los Angeles, CA 90068

ABC Entertainment Radio Network

SCHEDULED START TIME	ACTUAL TIME	ELEMENT	RUNNING TIME
29:29		LOGO: AMERICAN COUNTRY COUNTDOWN #24 STILL WITHIN THE SOUND OF MY VOICE Glen Campbell (A) SOUTHERN NIGHTS Glen Campbell (B) LOGO: MY KIND OF COUNTRY, MY KIND OF MUSIC	07:57
37:26		C-4 NETWORK SPOT: FOLGERS (OUT CUE) jingle ends cold with... "...in your cup."	:60
38:26		LOCAL INSERT:	:60
39:26		LOGO: AMERICAN COUNTRY COUNTDOWN #23 I'M GANNA MISS YOU GIRL Michael Martin Murphey (A) #22 TELL ME TRUE Juice Newton (A/B) LOGO: MY KIND OF COUNTRY, MY KIND OF MUSIC	07:49
47:15		C-5 NETWORK SPOT: CHEVROLET/GREYHOUND/TASTER'S CHOICE (OUT CUE) jingle ends cold with... "...from Taster's Choice."	:60 30/30
49:15		LOGO: AMERICAN COUNTRY COUNTDOWN #21 THAT'S MY JOB Conway Twitty (A) AMANDA Waylon Jennings (B) 57:21 THEME UP AND UNDER WITH TALK UNIT ENDING AT:57:36 THEME TO: (:14) 57:50	08:21
57:50		C-6 LOCAL INSERT:	2:00
59:50		STATION I. D.:	:10



FOR WEEK ENDING: 1/23/88
 CYCLE NO. 881 PROGRAM 4 OF 13
 DISC & HALF HOUR NO. 3A (Backed w/ 1B)
 PAGE NO. 5

3575 Cahuenga Blvd. W., Suite 555, Los Angeles, CA 90068

ABC Entertainment Radio Network

SCHEDULED START TIME	ACTUAL TIME	ELEMENT	RUNNING TIME
00:00		THEME AND OPENING OF PART III #20 TOO GONE TOO LONG Randy Travis (A) #19 I WANT A LOVE LIKE THAT Judy Rodman (B/A) LOGO: MY KIND OF COUNTRY, MY KIND OF MUSIC	07:42
07:42		C-1 NETWORK SPOT: MOTEL 6 (OUT CUE) jingle ends cold with... "...light on for ya."	:60
08:42		LOCAL INSERT:	:60
09:42		LOGO: AMERICAN COUNTRY COUNTDOWN #18 FACE TO FACE Alabama (B) (THERE'S A) FIRE IN THE NIGHT Alabama (A) LOGO: MY KIND OF COUNTRY, MY KIND OF MUSIC	07:52
17:34		C-2 NETWORK SPOT: MRS. PAUL'S/CLOROX 2 (OUT CUE) jingle ends cold with... "...Clorox 2."	30/30
18:34		LOCAL INSERT:	:60
19:34		LOGO: AMERICAN COUNTRY COUNTDOWN #17 OH WHAT A LOVE Nitty Gritty Dirt Band (A) #16 DO YOU BELIEVE ME NOW Vern Gosdin (A/B) LOGO: MY KIND OF COUNTRY, MY KIND OF MUSIC	07:15
26:49		C-3 NETWORK SPOT: FOLGERS (OUT CUE) jingle ends cold with... "...in your cup."	:60
27:49		LOCAL INSERT:	:60
28:49		STATION I. D.: OVER FOR SIDE 3B	:10



ABC Watermark



FOR WEEK ENDING: 1/23/88
 CYCLE NO. 881 PROGRAM 4 OF 13
 DISC & HALF HOUR NO. 3B (Backed w/ 2A)
 PAGE NO. 6

3575 Cahuenga Blvd. W., Suite 555, Los Angeles, CA 90068

ABC Entertainment Radio Network

SCHEDULED START TIME	ACTUAL TIME	ELEMENT	RUNNING TIME
28:59		LOGO: AMERICAN COUNTRY COUNTDOWN #15 SURE THING Foster & Lloyd (A/B) #14 I WON'T TAKE LESS THAN YOUR LOVE Tanya Tucker w/ Paul Davis & Paul Overstreet (A/B)	07:51
		LOGO: MY KIND OF COUNTRY, MY KIND OF MUSIC C-4	
36:50		NETWORK SPOT: TRUE VALUE/BAYER (OUT CUE) voice out cold with... "...that works wonders."	30/30
37:50		LOCAL INSERT:	:60
38:50		LOGO: AMERICAN COUNTRY COUNTDOWN #13 PLEASE PLEASE BABY Dwight Yoakam (B) LOVE'S GONNA LIVE HERE AGAIN Buck Owens (B)	09:28
		#12 ONE FRIEND Dan Seals (B) LOGO: MY KIND OF COUNTRY, MY KIND OF MUSIC C-5	
48:18		NETWORK SPOT: CHEVROLET/MOTEL 6 (OUT CUE) jingle ends cold after... "...light on for ya."	60/60
50:18		LOGO: AMERICAN COUNTRY COUNTDOWN #11 TWINKLE TWINKLE LUCKY STAR Merle Haggard (B) SHADOWS IN THE MOONLIGHT Anne Murray (A/G)	07:24
57:36		THEME UP AND UNDER WITH TALK UNIT ENDING AT: 57:42 THEME TO: (:08) 57:50	
		C-6	
57:50		LOCAL INSERT:	2:00
59:50		STATION I. D.:	:10



ABC Watermark



FOR WEEK ENDING: 1/23/88
 CYCLE NO. 881 PROGRAM 4 OF 13
 DISC & HALF HOUR NO. 4A (Backed w/ 2B)
 PAGE NO. 7

3575 Cahuenga Blvd. W., Suite 555, Los Angeles, CA 90068

ABC Entertainment Radio Network

SCHEDULED START TIME	ACTUAL TIME	ELEMENT	RUNNING TIME
00:00		THEME AND OPENING OF PART IV #10 LYIN' IN HIS ARMS AGAIN Forester Sisters (B) #9 I WOULDN'T BE A MAN Don Williams (A) LOGO: MY KIND OF COUNTRY, MY KIND OF MUSIC	07:59
07:59		C-1 NETWORK SPOT: FOLGERS (OUT CUE) jingle ends cold with... "...in your cup."	:60
08:59		LOCAL INSERT:	:60
09:59		LOGO: AMERICAN COUNTRY COUNTDOWN #8 ONE STEP FORWARD Desert Rose Band (B) STAY A LITTLE LONGER Bob Wills (B) STAY A LITTLE LONGER Willie Nelson (B) LOGO: MY KIND OF COUNTRY, MY KIND OF MUSIC	10:12
20:11		C-2 NETWORK SPOT: GAVISCON/VIRO-MED (OUT CUE) jingle fades after... "...Viro-Med."	30/30
21:11		LOCAL INSERT:	:60
22:11		LOGO: AMERICAN COUNTRY COUNTDOWN #7 I'LL PIN A NOTE ON YOUR PILLOW Billy Joe Royal (B/A) #6 TENNESSEE FLAT TOP BOX Rosanne Cash (B) LOGO: MY KIND OF COUNTRY, MY KIND OF MUSIC	06:24
28:35		C-3 NETWORK SPOT: BAYER/TASTER'S CHOICE (OUT CUE) jingle ends cold with.. "...from Taster's Choice."	30/30
29:35		LOCAL INSERT:	:60
30:35		STATION I. D.: OVER FOR SIDE 4B	:10



ABC Watermark



FOR WEEK ENDING: 1/23/88
 CYCLE NO. 881 PROGRAM 4 OF 13
 DISC & HALF HOUR NO. 4B (Backed w/ 1A)
 PAGE NO. 8

3575 Cahuenga Blvd. W., Suite 555, Los Angeles, CA 90068

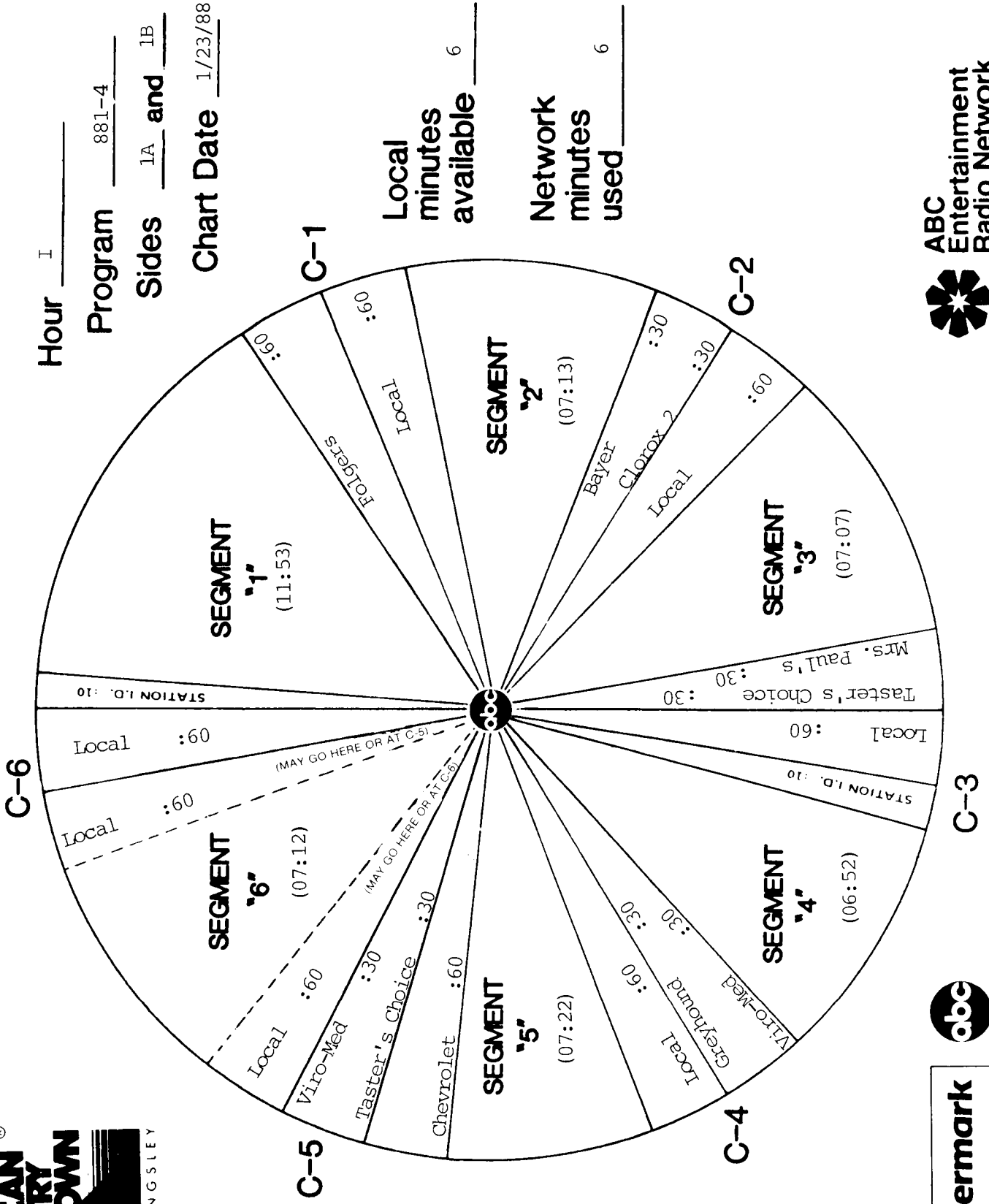
ABC Entertainment Radio Network

SCHEDULED START TIME	ACTUAL TIME	ELEMENT	RUNNING TIME
30:45		LOGO: AMERICAN COUNTRY COUNTDOWN #5 JUST LOVIN' YOU O'Kanes (A) #4 CRYING SHAME Michael Johnson (A) LOGO: MY KIND OF COUNTRY, MY KIND OF MUSIC	08:01
38:46		C-4 NETWORK SPOT: GREYHOUND/CLOROX 2 (OUT CUE) jingle ends cold with... "...Clorox 2."	30/30
39:46		LOCAL INSERT:	:60
40:46		LOGO: AMERICAN COUNTRY COUNTDOWN #3 WHEELS Restless Heart (A) LOGO: MY KIND OF COUNTRY, MY KIND OF MUSIC	04:18
45:04		C-5 NETWORK SPOT: MOTEL 6/FOGLERS (OUT CUE) jingle ends cold with... "...in your cup."	60/60
47:04		LOGO: AMERICAN COUNTRY COUNTDOWN #2 GOIN' GONE Kathy Mattea (A/B) #1 WHERE DO THE NIGHT GO Ronnie Milsap (A) CLOSE: "AMERICAN COUNTRY COUNTDOWN HAS BEEN BROUGHT TO YOU IN PART BY BAYER, THE WONDER DRUG THAT WORKS WONDERS. BY NEW MARAGOR DARK ROAST COFFEE, IT'S BURSTIN WITH FLAVOR. AND BY CHEVY TRUCK, THE HEARTBEAT OF AMERICA...TODAY'S CHEVY TRUCK." THEME UP AND UNDER WITH TALK UNIT ENDING AT:57:44	10:40
56:45		THEME (:06) TO: 57:50 C-6	
57:50		LOCAL INSERT:	2:00
59:50		STATION I. D.:	:10

FORMAT AND COMMERCIAL CLOCK



Hour I Program 881-4
 Sides 1A and 1B
 Chart Date 1/23/88



Local minutes available 6
 Network minutes used 6



FORMAT AND COMMERCIAL CLOCK

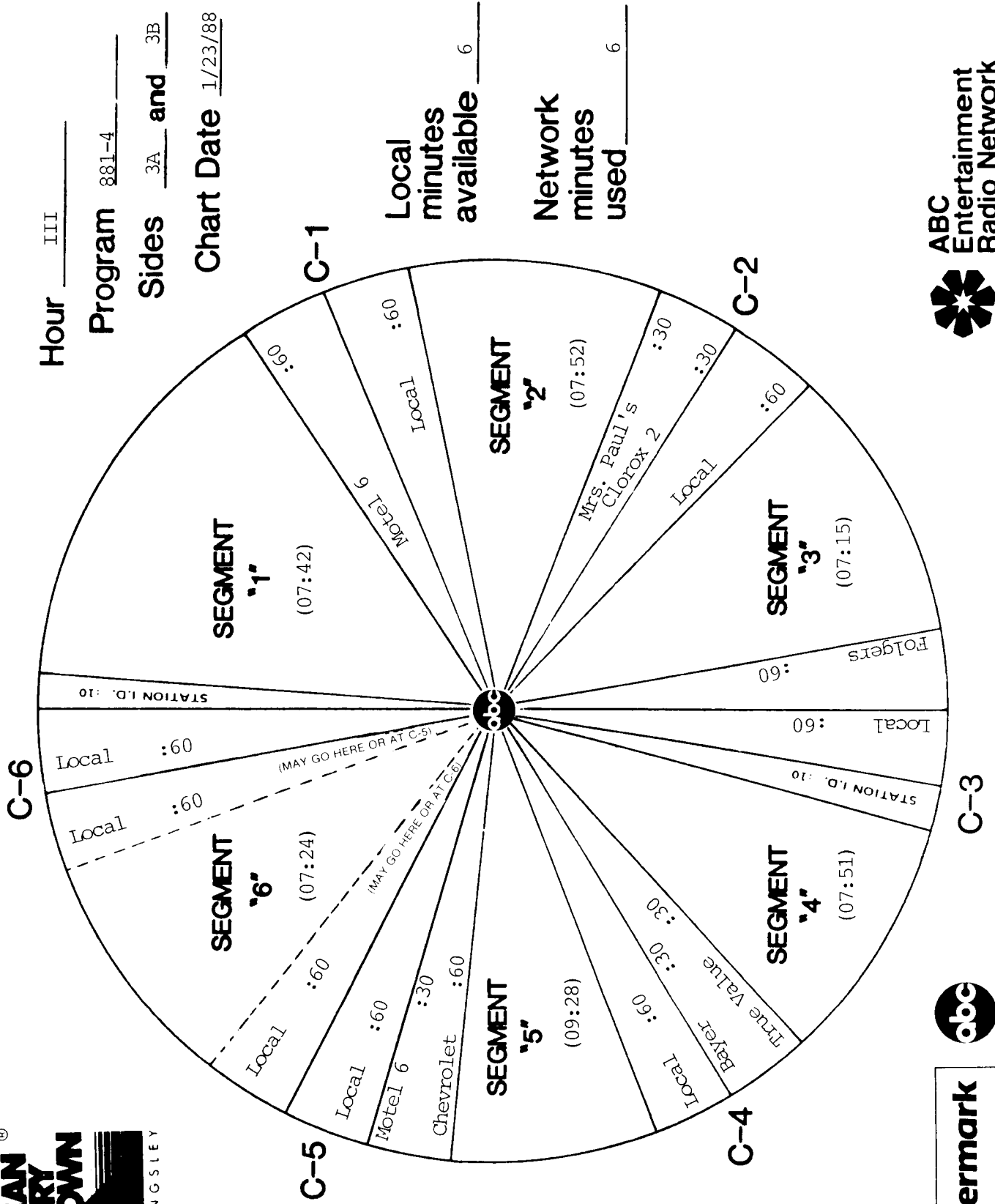


Hour III

Program 881-4

Sides 3A and 3B

Chart Date 1/23/88



Local minutes available 6

Network minutes used 6



ABC Entertainment Radio Network



ABC Watermark

FORMAT AND COMMERCIAL CLOCK

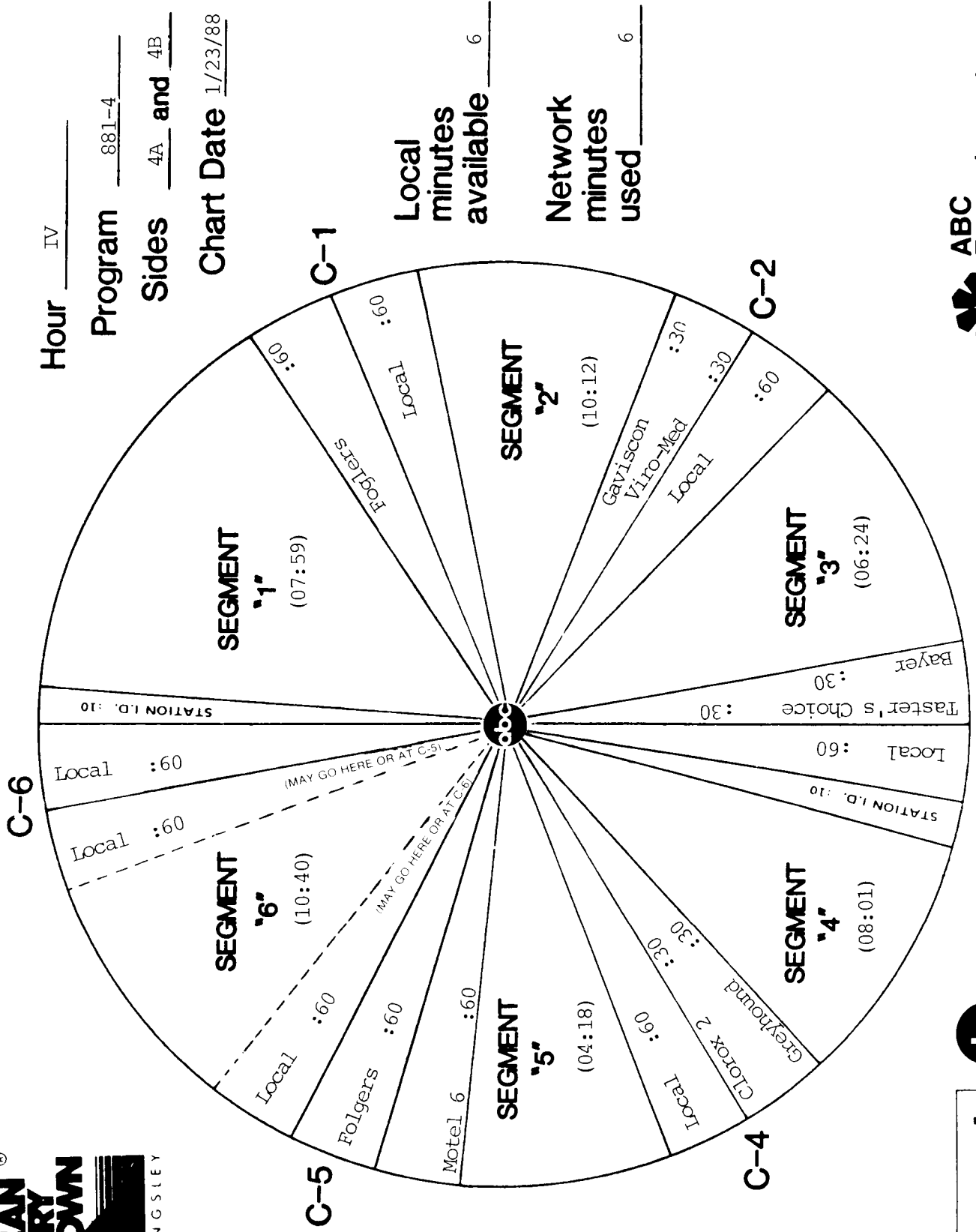


Hour IV

Program 881-4

Sides 4A and 4B

Chart Date 1/23/88



Local minutes available 6

Network minutes used 6

ABC Watermark



TOPICAL PROMOS

ACC TOPICAL PROMOS FOR SHOW # 881-4 ARE LOCATED AT THE END OF SIDE 4B

DO NOT USE AFTER 1/24/88

**AMERICAN
COUNTRY
COUNTDOWN** ®



WITH BOB KINGSLEY

ABC Watermark

3575 Cahuenga Blvd. West #555
Los Angeles, CA 90068
(818) 980-9490

1) SEALS SEALS OWN FATE AT TOP (:25)

Hi, this is Bob Kingsley and last week on American Country Countdown the number one spot on Billboard magazine's country chart was literally sealed up. Now, that's because Dan Seals took his song called, "ONE FRIEND" all the way to score his number one hit. Now, just below Dan at #2 was Ronnie Milsap who hopes to score his 32nd number one country hit this week on American Country Countdown.

2) MILSAP THIRD ALL TIME #1 HITTER (:27)

Hello, I'm Bob Kingsley with American Country Countdown...and last week Ronnie Milsap moved into #2 on the survey obviously striking distance of his 32nd number one country hit. Now, only two acts have more solo number one's than Ronnie. Merle Haggard with 34 and Conway Twitty the leader with 35. Now, they too are in the countdown watching to see if Milsap closed the gap on them this week on American Country Countdown.

3) JOHNNY CASH MORE REASON THAN ONE TO ROOT FOR ROSANNE (:26)

Hi, this is Bob Kingsley with American Country Countdown and last week singer Johnny Cash had more than one reason to root for his daughter Rosanne as she moved up to #10 to collect her 11th top ten hit. You see besides fatherly support, Rosanne's current song, "TENNESSEE FLAT TOP BOX" is one that Johnny wrote, so he's hoping Rosanne takes it all the way to the top. Find out how Johnny's song is doing this week on American Country Countdown.

4) ALWAYS A BRIDE'S MAID (:28)

Hi, I'm Bob Kingsley with American Country Countdown and last week the artist to watch was a lady who's beginning to understand the saying "always a bridesmaid, never a bride." Kathy Mattea has been to the top ten five times but never to #1. But, last week Kathy jumped up to number 3 in the top ten, and may have the momentum to go all the way. Find out how Kathy and all your favorites are doing this week on American Country Countdown.



ABC Watermark



29:13

FOR WEEK ENDING: 1/23/88
 CYCLE NO. 881 PROGRAM 4 OF 13
 DISC & HALF HOUR NO. 1A (Backed w/ 4B)
 PAGE NO. 1

3575 Cahuenga Blvd. W., Suite 555 Los Angeles, CA 90068

ABC Entertainment Radio Network

SCHEDULED START TIME	ACTUAL TIME	ELEMENT	RUNNING TIME
		BILLBOARD: "NOW, AMERICAN COUNTRY COUNTDOWN BROUGHT TO YOU IN PART BY BAYER, THE WONDER DRUG THAT WORKS WONDERS. BY NEW MARAGOR DARK ROAST COFFEE, IT'S BURSTING WITH FLAVOR. AND BY CHEVY TRUCK, THE HEARTBEAT OF AMERICA...TODAY'S CHEVY TRUCK." THEME AND OPENING OF PART I THEME: "MY KIND OF COUNTRY" (MARKWATER MUSIC/BMI) #1 (LW) ONE FRIEND Dan Seals (B) #40 THAT IT LOOSE Judds () #39 I DIDN'T (EVERY CHANCE I HAD) Johnny Rodriguez (B/A) LOGO: MY KIND OF COUNTRY, MY KIND OF MUSIC	
		NETWORK SPOT: FOLGERS (OUT CUE) jingle ends cold with... "...in your cup." LOCAL INSERT:	:60 :60
		LOGO: AMERICAN COUNTRY COUNTDOWN #38 WILDER DAYS Baillie and the Boys (A) #37 LOUISIANA RAIN John Wesley Ryles (B/A) LOGO: MY KIND OF COUNTRY, MY KIND OF MUSIC	
		NETWORK SPOT: BAYER/CLOROX 2 (OUT CUE) jingle ends cold with... "...Clorox 2." LOCAL INSERT:	30/30 :60
		LOGO: AMERICAN COUNTRY COUNTDOWN #36 TOUCH AND GO CRAZY Lee Greenwood (B/A) #35 LIFE TURNED HER THAT WAY Ricky Van Shelton (B) LOGO: MY KIND OF COUNTRY, MY KIND OF MUSIC	
		NETWORK SPOT: MRS. PAUL'S/TASTER'S CHOICE (OUT CUE) jingle ends cold with... "...from Taster's Choice." LOCAL INSERT: STATION I. D.: OVER FOR SIDE 1B	30/30 :60 :10



Buddy

ABC Watermark

25:22

FOR WEEK ENDING: 1/23/88
 CYCLE NO. 881 PROGRAM 4 OF 13
 DISC & HALF HOUR NO. 1B (Backed w/ 3A)
 PAGE NO. 2

3575 Cahuenga Blvd. W., Suite 555, Los Angeles, CA 90068

ABC Entertainment Radio Network

SCHEDULED START TIME	ACTUAL TIME	ELEMENT	RUNNING TIME
		LOGO: AMERICAN COUNTRY COUNTDOWN #34 THE BIRD George Jones (A/B) WALK THROUGH THIS WORL WITH ME George Jones (B) LOGO: MY KIND OF COUNTRY, MY KIND OF MUSIC	
		C-4 NETWORK SPOT: VIRO-MED/GREYHOUND (OUT CUE) jingle ends cold after... "...driving to us." LOCAL INSERT:	30/30 :60
		LOGO: AMERICAN COUNTRY COUNTDOWN #33 SHOULDN'T IT BE EASIER THAN THIS Charley Pride (A) #32 TALKIN' TO MYSELF AGAIN Tammy Wynette (A/B) LOGO: MY KIND OF COUNTRY, MY KIND OF MUSIC	
		C-5 NETWORK SPOT: CHEVROLET/TASTER'S CHOICE/VIRO-MED (OUT CUE) jingle fades after... "...Viro-Med."	:60 30/30
		LOGO: AMERICAN COUNTRY COUNTDOWN #31 SOMEWHERE BETWEEN RAGGED AND RIGHT John Anderson (B) NOBODY LIKES SAD SONGS Ronnie Milsap () THEME UP AND UNDER WITH TALK UNIT ENDING AT: THEME TO: 57:50	
		C-6 LOCAL INSERT: STATION I. D.:	2:00 :10



Buddy

ABC Watermark

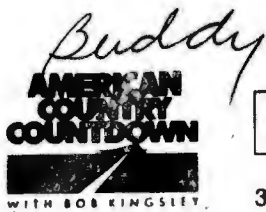
abc 26:22

FOR WEEK ENDING: 1/23/88
 CYCLE NO. 881 PROGRAM 4 OF 13
 DISC & HALF HOUR NO. 2A (Backed w/ 3B)
 PAGE NO. 3

3575 Cahuenga Blvd. W., Suite 555, Los Angeles, CA 90068

ABC Entertainment Radio Network

SCHEDULED START TIME	ACTUAL TIME	ELEMENT	RUNNING TIME
		THEME AND OPENING OF PART II #30 THIS OLD HOUSE S-K-B (B/A) #29 HEAVEN CAN'T BE FOUND Hank Williams Jr. (B) LOGO: MY KIND OF COUNTRY, MY KIND OF MUSIC	
		NETWORK SPOT: MOTEL 6 (OUT CUE) jingle ends cold after... "...light on for ya." LOCAL INSERT:	:60 :60
		LOGO: AMERICAN COUNTRY COUNTDOWN	
		#28 I CAN'T GET CLOSE ENOUGH Exile (B) #27 SOME OLD SIDE ROAD Keith Whitley (A) LOGO: MY KIND OF COUNTRY, MY KIND OF MUSIC	
		NETWORK SPOT: TRUE VALUE/GREYHOUND (OUT CUE) jingle ends cold after... "...driving to us." LOCAL INSERT:	30/30 :60
		LOGO: AMERICAN COUNTRY COUNTDOWN #26 THIS MISSIN' YOU HEART OF MINE Sawyer Brown (B/A) #25 ONLY LOVE CAN SAVE ME NOW Crystal Gayle (B/A) LOGO: MY KIND OF COUNTRY, MY KIND OF MUSIC	
		NETWORK SPOT: BAYER/CLOROX 2 (OUT CUE) jingle ends cold with... "...Clorox 2." LOCAL INSERT: STATION I. D.:	30/30 :60 :10
		OVER FOR SIDE 2B	



ABC Watermark

abc **27:55**

FOR WEEK ENDING: 1/23/88
 CYCLE NO. 881 PROGRAM 4 OF 13
 DISC & HALF HOUR NO. 2B (Backed w/ 4A)
 PAGE NO. 4

3575 Cahuenga Blvd. W., Suite 555, Los Angeles, CA 90068

ABC Entertainment Radio Network

SCHEDULED START TIME	ACTUAL TIME	ELEMENT	RUNNING TIME
		LOGO: AMERICAN COUNTRY COUNTDOWN	
		#24 STILL WITHIN THE SOUND OF MY VOICE Glen Campbell (A)	
		SOUTHERN NIGHTS Glen Campbell ()	
		LOGO: MY KIND OF COUNTRY, MY KIND OF MUSIC	
		NETWORK SPOT: FOLGERS (OUT CUE) jingle ends cold with... "...in your cup."	:60
		LOCAL INSERT:	:60
		LOGO: AMERICAN COUNTRY COUNTDOWN	
		#23 I'M GANNA MISS YOU GIRL Michael Martin Murphey (A)	
		#22 TELL ME TRUE Juice Newton (A/B)	
		LOGO: MY KIND OF COUNTRY, MY KIND OF MUSIC	
		NETWORK SPOT: CHEVROLET/GREYHOUND/TASTER'S CHOICE (OUT CUE) jingle ends cold with... "...from Taster's Choice."	:60 30/30
		LOGO: AMERICAN COUNTRY COUNTDOWN	
		#21 THAT'S MY JOB Conway Twitty (A)	
		AMANDA Waylon Jennings ()	
		THEME UP AND UNDER WITH TALK UNIT ENDING AT: THEME TO: 57:50	
		LOCAL INSERT:	2:00
		STATION I. D.:	:10



Buddy

ABC Watermark

abc 25.49

FOR WEEK ENDING: 1/23/88
 CYCLE NO. 881 PROGRAM 4 OF 13
 DISC & HALF HOUR NO. 3A (Backed w/ 1B)
 PAGE NO. 5

3575 Cahuenga Blvd. W., Suite 585, Los Angeles, CA 90068

ABC Entertainment Radio Network

SCHEDULED START TIME	ACTUAL TIME	ELEMENT	RUNNING TIME
		THEME AND OPENING OF PART III #20 TOO GONE TOO LONG Randy Travis (A) #19 I WANT A LOVE LIKE THAT Judy Rodman (B/A) LOGO: MY KIND OF COUNTRY, MY KIND OF MUSIC	
		NETWORK SPOT: MOTEL 6 (OUT CUE) jingle ends cold with... "...light on for ya." LOCAL INSERT:	:60 :60
		LOGO: AMERICAN COUNTRY COUNTDOWN #18 FACE TO FACE Alabama (B) (THERE'S A) FIRE IN THE NIGHT Alabama () LOGO: MY KIND OF COUNTRY, MY KIND OF MUSIC	
		NETWORK SPOT: MRS. PAUL'S/CLOROX 2 (OUT CUE) jingle ends cold with... "...Clorox 2." LOCAL INSERT:	30/30 :60
		LOGO: AMERICAN COUNTRY COUNTDOWN #17 OH WHAT A LOVE Nitty Gritty Dirt Band (A) #16 DO YOU BELIEVE ME NOW Vern Gosdin (A/B) LOGO: MY KIND OF COUNTRY, MY KIND OF MUSIC	
		NETWORK SPOT: FOLGERS (OUT CUE) jingle ends cold with... "...in your cup." LOCAL INSERT: STATION I. D.:	:60 :60 :10
		OVER FOR SIDE 3B	



SCHEDULED START TIME	ACTUAL TIME	ELEMENT	RUNNING TIME
		LOGO: AMERICAN COUNTRY COUNTDOWN	
		#15 SURE THING Foster & Lloyd (A/B)	
		#14 I WON'T TAKE LESS THAN YOUR LOVE Tanya Tucker w/ Paul Davis & Paul Overstreet (A/B)	
		LOGO: MY KIND OF COUNTRY, MY KIND OF MUSIC	
		C-4 NETWORK SPOT: TRUE VALUE/BAYER (OUT CUE) voice out cold with... "...that works wonders."	30/30
		LOCAL INSERT:	:60
		LOGO: AMERICAN COUNTRY COUNTDOWN	
		#13 PLEASE PLEASE BABY Dwight Yoakam (B)	
		LOVE'S GONNA LIVE HERE AGAIN Buck Owens (B)	
		#12 ONE FRIEND Dan Seals (B)	
		LOGO: MY KIND OF COUNTRY, MY KIND OF MUSIC	
		C-5 NETWORK SPOT: CHEVROLET/MOTEL 6 (OUT CUE) jingle ends cold after... "...light on for ya."	60/60
		LOGO: AMERICAN COUNTRY COUNTDOWN	
		#11 TWINKLE TWINKLE LUCKY STAR Merle Haggard (B)	
		SHADOWS IN THE MOONLIGHT Anne Murray ()	
		THEME UP AND UNDER WITH TALK UNIT ENDING AT: THEME TO: 57:50	
		C-6 LOCAL INSERT:	2:00
		STATION I. D.:	:10



ABC Watermark



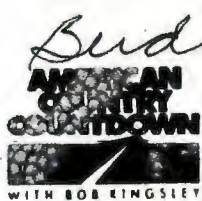
27.35

FOR WEEK ENDING: 1/23/88
 CYCLE NO. 881 PROGRAM 4 OF 13
 DISC & HALF HOUR NO. 4A (Backed w/ 2B)
 PAGE NO. 7

3575 Cahuenga Blvd. W., Suite 555, Los Angeles, CA 90068

ABC Entertainment Radio Network

SCHEDULED START TIME	ACTUAL TIME	ELEMENT	RUNNING TIME
		THEME AND OPENING OF PART IV #10 LYIN' IN HIS ARMS AGAIN Forester Sisters (B) #9 I WOULDN'T BE A MAN Don Williams (A) LOGO: MY KIND OF COUNTRY, MY KIND OF MUSIC	
		C-1 NETWORK SPOT: FOLGERS (OUT CUE) jingle ends cold with... "...in your cup." LOCAL INSERT:	:60 :60
		LOGO: AMERICAN COUNTRY COUNTDOWN #8 ONE STEP FORWARD Desert Rose Band (B) STAY A LITTLE LONGER Bob Wills (B) STAY A LITTLE LONGER Willie Nelson (B) LOGO: MY KIND OF COUNTRY, MY KIND OF MUSIC	
		C-2 NETWORK SPOT: GAVISCON/VIRO-MED (OUT CUE) jingle fades after... "...Viro-Med." LOCAL INSERT:	30/30 :60
		LOGO: AMERICAN COUNTRY COUNTDOWN #7 I'LL PIN A NOTE ON YOUR PILLOW Billy Joe Royal (B/A) #6 TENNESSEE FLAT TOP BOX Rosanne Cash (B) LOGO: MY KIND OF COUNTRY, MY KIND OF MUSIC	
		C-3 NETWORK SPOT: BAYER/TASTER'S CHOICE (OUT CUE) jingle ends cold with... "...from Taster's choice." LOCAL INSERT: STATION I. D.:	30/30 :60 :10
		OVER FOR SIDE 4B	



ABC Watermark



28:15
INCLUDES
A PROMOS

WEEK ENDING: 1/23/88
CYCLE NO. 881 PROGRAM 4 OF 13
DISC & HALF HOUR NO. 4B (Backed w/ 1A)
PAGE NO. 8

3575 Cahuenga Blvd. W., Suite 555, Los Angeles, CA 90068

ABC Entertainment Radio Network

SCHEDULED START TIME	ACTUAL TIME	PROGRAM	RUNNING TIME
		LOGO: AMERICAN COUNTRY COUNTDOWN #5 JUST LOVIN' YOU O'Kanes (A) #4 CRYING SHAME Michael Johnson (A) LOGO: MY KIND OF COUNTRY, MY KIND OF MUSIC	
		NETWORK SPOT: GREYHOUND/CLOROX 2 (OUT CUE) jingle ends cold with... "...Clorox 2." LOCAL INSERT:	30/30 :60
		LOGO: AMERICAN COUNTRY COUNTDOWN #3 WHEELS Restless Heart (A) LOGO: MY KIND OF COUNTRY, MY KIND OF MUSIC	
		NETWORK SPOT: MOTEL 6/FOGLERS (OUT CUE) jingle ends cold with... "...in your cup."	60/60
		LOGO: AMERICAN COUNTRY COUNTDOWN #2 GOIN' GONE Kathy Mattea (A/B) #1 WHERE DO THE NIGHT GO Ronnie Milsap (A) CLOSE: "AMERICAN COUNTRY COUNTDOWN HAS BEEN BROUGHT TO YOU IN PART BY BAYER, THE WONDER DRUG THAT WORKS WONDERS. BY NEW MARAGOR DARK ROAST COFFEE, IT'S BURSTIN WITH FLAVOR.. AND BY CHEVY TRUCK, THE HEARTBEAT OF AMERICA...TODAY'S CHEVY TRUCK." THEME UP AND UNDER WITH TALK UNIT ENDING AT:	
		THEME () TO: 57:50 LOCAL INSERT: LOCK BAND STATION I.D.: A PROMOS	2:00 :10