

28:26

SCHEDULED START TIME	ACTUAL TIME	ELEMENT	RUNNING TIME
00:00		THEME AND OPENING OF PART I THEME #1: "MY KIND OF COUNTRY" (MARKWATER MUSIC, BMI) #1 (LW) HOLD ME () K. T. Oslin #40 YOU STILL DO (A) T. G. Sheppard #39 NEW FOOL AT AN OLD GAME (A/B) Reba McEntire LOGO: MY KIND OF COUNTRY, MY KIND OF MUSIC	12:08
12:08		NETWORK SPOT: C-1 CHEVY TRUCKS (out cue) Jingle fades after... "...next gas station."	:60
13:08		LOCAL INSERT:	:60
14:08		LOGO: AMERICAN COUNTRY COUNTDOWN #38 FROM A JACK TO A KING (B) Ricky Van Shelton #37 SLOW PASSIN' TIME (A) Anne Murray LOGO: MY KIND OF COUNTRY, MY KIND OF MUSIC	07:00
21:08		NETWORK SPOT: C-2 TASTER'S CHOICE/TRUE VALUE (out cue) Voice out cold with... "...and home centers."	:30/:30
22:08		LOCAL INSERT:	:60
23:08		LOGO: AMERICAN COUNTRY COUNTDOWN #36 COME AS YOU WERE (B) T. Graham Brown #35 RUNNIN' IN MY HEART (B) Jo-EI Sonnier LOGO: MY KIND OF COUNTRY, MY KIND OF MUSIC	06:18
29:26		NETWORK SPOT: C-3 CHEVY TRUCKS (out cue) Jingle fades after... "...coming up next!"	:60
30:26		LOCAL INSERT:	:60
31:26		STATION I.D.:	:10

25:46

3575 Cahuenga Blvd. W., Suite 555, Los Angeles, CA 90068
Phone (818) 980-9490 FAX (213) 850-5832
Outside the U.S. contact RADIO EXPRESS 1-213-850-1003

SCHEDULED START TIME	ACTUAL TIME	ELEMENT	RUNNING TIME
31:36		<p>LOGO: AMERICAN COUNTRY COUNTDOWN</p> <p>#34 DON'T YOU EVER GET TIRED (OF HURTING ME) (B) Ronnie Milsap</p> <p>OLDIE: WHY DON'T YOU SPEND THE NIGHT (B) Ronnie Milsap</p> <p>LOGO: MY KIND OF COUNTRY, MY KIND OF MUSIC</p>	07:21
38:57		<p style="text-align: center;">C-4</p> <p>NETWORK SPOT: ARMOUR FOODS/U.S. NAVY (out cue) Jingle ends cold with... "...the U.S. Navy"</p>	:30/:30
39:57		<p>LOCAL INSERT:</p>	:60
40:57		<p>LOGO: AMERICAN COUNTRY COUNTDOWN</p> <p>#33 I FEEL FINE (B) Sweethearts of the Rodeo</p> <p>#32 BRIDGES AND WALLS (A/B) Oak Ridge Boys</p> <p>LOGO: MY KIND OF COUNTRY, MY KIND OF MUSIC</p>	07:30
48:27		<p style="text-align: center;">C-5</p> <p>NETWORK SPOT: NESTLE QUIK COLGATE TELEDISC (out cue) Voice out cold with... "...waiting to hear from you."</p>	:30 :90
50:27		<p>LOGO: AMERICAN COUNTRY COUNTDOWN</p> <p>#31 WE MUST BE DOING SOMETHING RIGHT (B) Eddie Rabbitt</p> <p>ARCHIVE: WAR IS HELL () T. G. Sheppard</p>	07:05
57:20		<p>THEME UP AND UNDER WITH TALK UNIT ENDING AT: 57:32 THEME TO: 57:50</p>	
57:50		<p style="text-align: center;">C-6</p> <p>LOCAL INSERT:</p>	2:00
59:50		<p>STATION I. D.:</p>	:10

27:51

SCHEDULED START TIME	ACTUAL TIME	ELEMENT	RUNNING TIME
00:00		<p><u>THEME AND OPENING OF PART II</u></p> <p>#30 HONEY I DARE YOU (B) Southern Pacific #29 YOU BABE (B) Merle Haggard OLDIE: I THINK I'LL JUST STAY HERE AND DRINK (B) Merle Haggard</p> <p>LOGO: MY KIND OF COUNTRY, MY KIND OF MUSIC</p>	12:52
12:52		<p>NETWORK SPOT: C-1</p> <p>U.S. NAVY/TASTER'S CHOICE (out cue) Jingle ends cold with... "...choice decaffeinated."</p>	:30/:30
13:52		<p>LOCAL INSERT:</p>	:60
14:52		<p>LOGO: AMERICAN COUNTRY COUNTDOWN</p> <p>#28 LOVE HELPS THOSE (B) Paul Overstreet #27 I JUST CALLED TO SAY GOODBYE AGAIN (A/B) Larry Boone</p> <p>LOGO: MY KIND OF COUNTRY, MY KIND OF MUSIC</p>	07:46
22:38		<p>NETWORK SPOT: C-2</p> <p>MOTEL 6 (out cue) Jingle ends cold after... "...light on for ya!"</p>	:60
23:38		<p>LOCAL INSERT:</p>	:60
24:38		<p>LOGO: AMERICAN COUNTRY COUNTDOWN</p> <p>#26 SHE REMINDED ME OF YOU (A) Mickey Gilley</p> <p>LOGO: MY KIND OF COUNTRY, MY KIND OF MUSIC</p>	04:13
28:51		<p>NETWORK SPOT: C-3</p> <p>GREYHOUND/U.S. NAVY (out cue) Jingle ends cold with... "...the U.S. Navy."</p>	:30/:30
29:51		<p>LOCAL INSERT:</p>	
30:51		<p>STATION I.D.:</p>	:60

26:21

SCHEDULED START TIME	ACTUAL TIME	ELEMENT	RUNNING TIME
31:01		<p>LOGO: AMERICAN COUNTRY COUNTDOWN</p> <p>#25 I WISH THAT I WAS STILL IN YOUR DREAMS (B/A) Conway Twitty</p> <p>#24 'TIL YOU CRY (A) Eddie Raven</p> <p>LOGO: MY KIND OF COUNTRY, MY KIND OF MUSIC</p>	07:57
38:58		<p style="text-align: center;">C-4</p> <p>NETWORK SPOT: MOTEL 6 (out cue) Jingle ends cold after... "...light on for ya'."</p>	:60
39:58		<p>LOCAL INSERT:</p>	:60
40:58		<p>LOGO: AMERICAN COUNTRY COUNTDOWN</p> <p>#23 HIGHWAY ROBBERY (B) Tanya Tucker</p> <p>#22 PAINT THE TOWN AND HANG THE MOON TONIGHT (A/B/A) J. C. Crowley</p> <p>LOGO: MY KIND OF COUNTRY, MY KIND OF MUSIC</p>	07:29
48:27		<p style="text-align: center;">C-5</p> <p>NETWORK SPOT: NESTLE QUIK COLGATE TELEDISC (out cue) Voice out cold with... "...waiting to hear from you."</p>	:30 :90
50:27		<p>LOGO: AMERICAN COUNTRY COUNTDOWN</p> <p>#21 DON'T WASTE IT ON THE BLUES (A) Gene Watson</p> <p>ARCHIVE: IT AIN'T EASY BEIN' EASY () Janie Fricke</p>	07:05
57:20		<p>THEME UP AND UNDER WITH TALK UNIT ENDING AT: 57:32 THEME TO: 57:50</p>	
57:50		<p style="text-align: center;">C-6</p> <p>LOCAL INSERT:</p>	2:00
59:50		<p>STATION I. D.:</p>	:10

26:45

SCHEDULED START TIME	ACTUAL TIME	ELEMENT	RUNNING TIME
00:00		<p>THEME AND OPENING OF PART III</p> <p>#20 I STILL BELIEVE IN YOU (B) Desert Rose Band</p> <p>#19 (IT'S ALWAYS GONNA BE) SOMEDAY (B/A) Holly Dunn</p> <p>LOGO: MY KIND OF COUNTRY, MY KIND OF MUSIC</p>	08:05
08:05		<p>NETWORK SPOT: C-1</p> <p>CHEVY TRUCKS (out cue) Jingle fades after... "...next gas station."</p>	:60
09:05		<p>LOCAL INSERT:</p>	:60
10:05		<p>LOGO: AMERICAN COUNTRY COUNTDOWN</p> <p>#18 SINCERELY (B) Forester Sisters</p> <p>#17 BORDERLINE (A) The Shooters</p> <p>LOGO: MY KIND OF COUNTRY, MY KIND OF MUSIC</p>	08:08
18:13		<p>NETWORK SPOT: C-2</p> <p>CAMPBELL'S/GREYHOUND (out cue) Jingle fades after... "...driving to us."</p>	:30/:30
19:13		<p>LOCAL INSERT:</p>	:60
20:13		<p>LOGO: AMERICAN COUNTRY COUNTDOWN</p> <p>#16 LIFE AS WE KNEW IT (B) Kathy Mattea</p> <p>#15 LET'S GET STARTED IF WE'RE GONNA BREAK MY HEART (B) Statler Bros.</p> <p>LOGO: MY KIND OF COUNTRY, MY KIND OF MUSIC</p>	07:32
27:45		<p>NETWORK SPOT: C-3</p> <p>MOTEL 6 (out cue) Jingle ends cold after... "...light on for ya'."</p>	:60
28:45		<p>LOCAL INSERT:</p>	:60
29:45		<p>STATION I.D.:</p>	:10

SCHEDULED START TIME	ACTUAL TIME	ELEMENT	RUNNING TIME
29:55		<p>LOGO: AMERICAN COUNTRY COUNTDOWN</p> <p>#14 EARLY IN THE MORNING AND LATE AT NIGHT (A) Hank Williams, Jr.</p> <p>OLDIE: MAJOR MOVES (B) Hank Williams, Jr.</p> <p>LOGO: MY KIND OF COUNTRY, MY KIND OF MUSIC</p>	07:18
37:13		<p style="text-align: center;">C-4</p> <p>NETWORK SPOT: TASTERS CHOICE/TRUE VALUE (out cue) Jingle ends cold after... "...and home centers."</p>	:30/:30
38:13		<p>LOCAL INSERT:</p>	:60
39:13		<p>LOGO: AMERICAN COUNTRY COUNTDOWN</p> <p>#13 I SANG DIXIE (B) Dwight Yoakam</p> <p>#12 BIG WHEELS IN THE MOONLIGHT (A/B) Dan Seals</p> <p>LOGO: MY KIND OF COUNTRY, MY KIND OF MUSIC</p>	08:53
48:06		<p style="text-align: center;">C-5</p> <p>NETWORK SPOT: U.S. NAVY COLGATE TELEDISC (out cue) Voice out cold with... "...waiting to hear from you."</p>	:30 :90
50:06		<p>LOGO: AMERICAN COUNTRY COUNTDOWN</p> <p>#11 LONG SHOT (A/B) Baillie And The Boys</p> <p>ARCHIVE: YOU AND I () EDDIE RABBITT AND CRYSTAL GAYLE</p>	06:51
57:11		<p>THEME UP AND UNDER WITH TALK UNIT ENDING AT: 57:26 THEME TO: 57:50</p>	
57:50		<p style="text-align: center;">C-6</p> <p>LOCAL INSERT:</p>	2:00
59:50		<p>STATION I. D.:</p>	:10



27:27
INCL. TOPICALS

SCHEDULED START TIME	ACTUAL TIME	ELEMENT	RUNNING TIME
00:00		<p>THEME AND OPENING OF PART IV</p> <p>#10 HOLD ME (S) K. T. Oslin</p> <p>CALENDAR: BEAUTIFUL DREAMER () Marty Robbins</p> <p>LOGO: MY KIND OF COUNTRY, MY KIND OF MUSIC</p>	08:13
08:13		<p>NETWORK SPOT: C-1</p> <p>GREYHOUND/NESTLE QUIK (out cue) Jingle fades after... "...a long way."</p>	:30/:30
09:13		<p>LOCAL INSERT:</p>	:60
10:13		<p>LOGO: AMERICAN COUNTRY COUNTDOWN</p> <p>#9 SONG OF THE SOUTH (A) Alabama</p> <p>OLDIE: ROLL ON (EIGHTEEN WHEELER) (A) Alabama</p> <p>LOGO: MY KIND OF COUNTRY, MY KIND OF MUSIC</p>	08:18
18:31		<p>NETWORK SPOT: C-2</p> <p>ARMOUR FOODS/GREYHOUND (out cue) Jingle fades after... "...driving to us."</p>	:30/:30
19:31		<p>LOCAL INSERT:</p>	:60
20:31		<p>LOGO: AMERICAN COUNTRY COUNTDOWN</p> <p>#8 BURNIN' A HOLE IN MY HEART (B/A) Skip Ewing</p> <p>#7 WHAT I'D SAY (A) Earl Thomas Conley</p> <p>LOGO: MY KIND OF COUNTRY, MY KIND OF MUSIC</p>	07:26
27:57		<p>NETWORK SPOT: C-3</p> <p>MOTEL 6 (out cue) Jingle ends cold with... "...light on for ya!"</p>	:60
28:57		<p>LOCAL INSERT:</p>	:60
29:57		<p>STATION I.D.:</p> <p>— LOCK BAND — (4) TOPICAL PROMOS</p>	:10



ABC Watermark



25:41

3575 Cahuenga Blvd. W., Suite 555, Los Angeles, CA 90068
 Phone (818) 980-9490 FAX (213) 850-5832
 Outside the U.S. contact RADIO EXPRESS 1-213-850-1003

FOR WEEK ENDING: 1/14/89
 CYCLE NO: 891 PGM: 3 OF: 13
 DISC/HALF HOUR: 4B (backed w/1A)
 PAGE NO: 8

ABC RADIO NETWORKS

SCHEDULED START TIME	ACTUAL TIME	ELEMENT	RUNNING TIME
30:07		LOGO: AMERICAN COUNTRY COUNTDOWN #6 HOLD ON (A LITTLE LONGER) (B) Steve Wariner #5 ALL THE REASONS WHY (B/A) Highway 101 LOGO: MY KIND OF COUNTRY, MY KIND OF MUSIC	07:15
37:22		NETWORK SPOT: ^{C4} CAMPBELL'S/TASTERS CHOICE (out cue) Jingle ends cold with... "...choice decaffeinated."	:30/:30
38:22		LOCAL INSERT:	:60
39:22		LOGO: AMERICAN COUNTRY COUNTDOWN #4 BLUE SIDE OF TOWN (B) Patty Loveless #3 DEEPER THAN THE HOLLER (B/A) Randy Travis LOGO: MY KIND OF COUNTRY, MY KIND OF MUSIC	07:21
46:43		NETWORK SPOT: ^{C5} U.S. NAVY COLGATE TELEDISC (out cue) Voice out cold with... "...waiting to hear from you."	:30 :90
48:43		LOGO: AMERICAN COUNTRY COUNTDOWN #2 SHE'S CRAZY FOR LEAVING (A/B) Rodney Crowell #1 CHANGE OF HEART (B) The Judds	10:07
56:55		THEME UP AND UNDER WITH TALK UNIT ENDING AT: 57:40 THEME TO: 57:55	
57:55		LOCAL INSERT: ^{C6} ***** *TOPICAL PROMOS ARE LOCATED* * AT THE END OF SIDE 4B 4A * *****	2:00
59:55		STATION I. D.:	:10



ABC Watermark



3575 Cahuenga Blvd. W., Suite 555, Los Angeles, CA 90068
 Phone (818) 980-9490 FAX (213) 850-5100
 Outside the U.S. contact RADIO EXPRESS 213-850-1003

FOR WEEK ENDING: 1/14/89
 CYCLE NO: 891 PGM: 3 OF: 13
 DISC/HALF HOUR: 1A (backed w/4B)
 PAGE NO: 1
ABC RADIO NETWORKS

SCHEDULED START TIME	ACTUAL TIME	ELEMENT	RUNNING TIME
00:00		THEME AND OPENING OF PART I THEME #1: "MY KIND OF COUNTRY" (MARKWATER MUSIC, BMI) #1 (LW) HOLD ME () K. T. Oslin #40 YOU STILL DO (A) T. G. Sheppard #39 NEW FOOL AT AN OLD GAME (A/B) Reba McEntire LOGO: MY KIND OF COUNTRY, MY KIND OF MUSIC	12:08
12:08		NETWORK SPOT: C-1 CHEVY TRUCKS (out cue) Jingle fades after... "...next gas station."	:60
13:08		LOCAL INSERT:	:60
14:08		LOGO: AMERICAN COUNTRY COUNTDOWN #38 FROM A JACK TO A KING (B) Ricky Van Shelton #37 SLOW PASSIN' TIME (A) Anne Murray LOGO: MY KIND OF COUNTRY, MY KIND OF MUSIC	07:00
21:08		NETWORK SPOT: C-2 TASTER'S CHOICE/TRUE VALUE (out cue) Voice out cold with... "...and home centers."	:30/:30
22:08		LOCAL INSERT:	:60
23:08		LOGO: AMERICAN COUNTRY COUNTDOWN #36 COME AS YOU WERE (B) T. Graham Brown #35 RAININ' IN MY HEART (B) Jo-EI Sonnier LOGO: MY KIND OF COUNTRY, MY KIND OF MUSIC	06:18
29:26		NETWORK SPOT: C-3 CHEVY TRUCKS (out cue) Jingle fades after... "...coming up next!"	:60
30:26		LOCAL INSERT:	:60
31:26		STATION I.D.:	:10

SCHEDULED START TIME	ACTUAL TIME	ELEMENT	RUNNING TIME
31:36		<p>LOGO: AMERICAN COUNTRY COUNTDOWN</p> <p>#34 DON'T YOU EVER GET TIRED (OF HURTING ME) (B) Ronnie Milsap</p> <p>OLDIE: WHY DON'T YOU SPEND THE NIGHT (B) Ronnie Milsap</p> <p>LOGO: MY KIND OF COUNTRY, MY KIND OF MUSIC</p>	07:21
38:57		<p style="text-align: center;">C-4</p> <p>NETWORK SPOT: ARMOUR FOODS/U.S. NAVY (out cue) Jingle ends cold with... "...the U.S. Navy"</p>	30/:30
39:57		<p>LOCAL INSERT:</p>	:60
40:57		<p>LOGO: AMERICAN COUNTRY COUNTDOWN</p> <p>#33 I FEEL FINE (B) Sweethearts of the Rodeo</p> <p>#32 BRIDGES AND WALLS (A/B) Oak Ridge Boys</p> <p>LOGO: MY KIND OF COUNTRY, MY KIND OF MUSIC</p>	07:30
48:27		<p style="text-align: center;">C-5</p> <p>NETWORK SPOT: NESTLE QUIK COLGATE TELEDISC (out cue) Voice out cold with... "...waiting to hear from you."</p>	:30 :90
50:27		<p>LOGO: AMERICAN COUNTRY COUNTDOWN</p> <p>#31 WE MUST BE DOING SOMETHING RIGHT (B) Eddie Rabbitt</p> <p>ARCHIVE: WAR IS HELL () T. G. Sheppard</p>	07:05
57:20		<p>THEME UP AND UNDER WITH TALK UNIT ENDING AT: 57:32 THEME TO: 57:50</p>	
57:50		<p style="text-align: center;">C-6</p> <p>LOCAL INSERT:</p>	2:00
59:50		<p>STATION I. D.:</p>	:10



ABC Watermark



3575 Cahuenga Blvd. W., Suite 555, Los Angeles, CA 90068
 Phone (818) 980-9490 FAX (213) 850-5832
 Outside the U.S. contact RADIO EXPRESS 1-213-850-1003

FOR WEEK ENDING: 1/14/89
 CYCLE NO: 891 PGM: 3 OF: 13
 DISC/HALF HOUR: 2A (backed w/3B)
 PAGE NO: 3

ABC RADIO NETWORKS

SCHEDULED START TIME	ACTUAL TIME	ELEMENT	RUNNING TIME
00:00		<p>THEME AND OPENING OF PART II</p> <p>#30 HONEY I DARE YOU (B) Southern Pacific #29 YOU BABE (B) Merle Haggard OLDIE: I THINK I'LL JUST STAY HERE AND DRINK (B) Merle Haggard</p> <p>LOGO: MY KIND OF COUNTRY, MY KIND OF MUSIC</p>	12:52
12:52		<p>NETWORK SPOT: C-1</p> <p>U.S. NAVY/TASTER'S CHOICE (out cue) Jingle ends cold with... "...choice decaffeinated."</p>	:30/:30
13:52		<p>LOCAL INSERT:</p>	:60
14:52		<p>LOGO: AMERICAN COUNTRY COUNTDOWN</p> <p>#28 LOVE HELPS THOSE (B) Paul Overstreet #27 I JUST CALLED TO SAY GOODBYE AGAIN (A/B) Larry Boone</p> <p>LOGO: MY KIND OF COUNTRY, MY KIND OF MUSIC</p>	07:46
22:38		<p>NETWORK SPOT: C-2</p> <p>MOTEL 6 (out cue) Jingle ends cold after... "...light on for ya'!"</p>	:60
23:38		<p>LOCAL INSERT:</p>	:60
24:38		<p>LOGO: AMERICAN COUNTRY COUNTDOWN</p> <p>#26 SHE REMINDED ME OF YOU (A) Mickey Gilley</p> <p>LOGO: MY KIND OF COUNTRY, MY KIND OF MUSIC</p>	04:13
28:51		<p>NETWORK SPOT: C-3</p> <p>GREYHOUND/U.S. NAVY (out cue) Jingle ends cold with... "...the U.S. Navy."</p>	:30/:30
29:51		<p>LOCAL INSERT:</p>	
30:51		<p>STATION I.O.:</p>	:60



SCHEDULED START TIME	ACTUAL TIME	ELEMENT	RUNNING TIME
31:01		<p>LOGO: AMERICAN COUNTRY COUNTDOWN</p> <p>#25 I WISH THAT I WAS STILL IN YOUR DREAMS (B/A) Conway Twitty</p> <p>#24 'TIL YOU CRY (A) Eddie Raven</p> <p>LOGO: MY KIND OF COUNTRY, MY KIND OF MUSIC</p>	07:57
38:58		<p style="text-align: center;">C-4</p> <p>NETWORK SPOT: MOTEL 6 (out cue) Jingle ends cold after... "...light on for ya'."</p>	:60
39:58		<p>LOCAL INSERT:</p>	:60
40:58		<p>LOGO: AMERICAN COUNTRY COUNTDOWN</p> <p>#23 HIGHWAY ROBBERY (B) Tanya Tucker</p> <p>#22 PAINT THE TOWN AND HANG THE MOON TONIGHT (A/B/A) J. C. Crowley</p> <p>LOGO: MY KIND OF COUNTRY, MY KIND OF MUSIC</p>	07:29
48:27		<p style="text-align: center;">C-5</p> <p>NETWORK SPOT: NESTLE QUIK COLGATE TELEDISC (out cue) Voice out cold with... "...waiting to hear from you."</p>	:30 :90
50:27		<p>LOGO: AMERICAN COUNTRY COUNTDOWN</p> <p>#21 DON'T WASTE IT ON THE BLUES (A) Gene Watson</p> <p>ARCHIVE: IT AIN'T EASY BEIN' EASY () Janie Fricke</p>	07:05
57:20		<p>THEME UP AND UNDER WITH TALK UNIT ENDING AT: 57:32 THEME TO: 57:50</p>	
57:50		<p style="text-align: center;">C-6</p> <p>LOCAL INSERT:</p>	2:00
59:50		<p>STATION I. D.:</p>	:10

SCHEDULED START TIME	ACTUAL TIME	ELEMENT	RUNNING TIME
00:00		<p><u>THEME AND OPENING OF PART III</u></p> <p>#20 I STILL BELIEVE IN YOU (B) Desert Rose Band</p> <p>#19 (IT'S ALWAYS GONNA BE) SOMEDAY (B/A) Holly Dunn</p> <p>LOGO: MY KIND OF COUNTRY, MY KIND OF MUSIC</p>	08:05
08:05		<p>NETWORK SPOT: C-1</p> <p>CHEVY TRUCKS (out cue) Jingle fades after... "...next gas station."</p>	:60
09:05		<p>LOCAL INSERT:</p>	:60
10:05		<p>LOGO: AMERICAN COUNTRY COUNTDOWN</p> <p>#18 SINCERELY (B) Forester Sisters</p> <p>#17 BORDERLINE (A) The Shooters</p> <p>LOGO: MY KIND OF COUNTRY, MY KIND OF MUSIC</p>	08:08
18:13		<p>NETWORK SPOT: C-2</p> <p>CAMPBELL'S/GREYHOUND (out cue) Jingle fades after... "...driving to us."</p>	:30/:30
19:13		<p>LOCAL INSERT:</p>	:60
20:13		<p>LOGO: AMERICAN COUNTRY COUNTDOWN</p> <p>#16 LIFE AS WE KNEW IT (B) Kathy Mattea</p> <p>#15 LET'S GET STARTED IF WE'RE GONNA BREAK MY HEART (B) Statler Bros.</p> <p>LOGO: MY KIND OF COUNTRY, MY KIND OF MUSIC</p>	07:32
27:45		<p>NETWORK SPOT: C-3</p> <p>MOTEL 6 (out cue) Jingle ends cold after... "...light on for ya'."</p>	:60
28:45		<p>LOCAL INSERT:</p>	:60
29:45		<p>STATION I.D.:</p>	:10



ABC Watermark



3575 Cahuenga Blvd. W., Suite 555, Los Angeles, CA 90068
 Phone (818) 980-9490 FAX (213) 850-5832
 Outside the U.S. contact RADIO EXPRESS 1-213-850-1003

FOR WEEK ENDING: 1/14/89
 CYCLE NO: 891 PGM: 3 OF: 13
 DISC/HALF HOUR: 3B (backed w/2A)
 PAGE NO: 6

ABC RADIO NETWORKS

SCHEDULED START TIME	ACTUAL TIME	ELEMENT	RUNNING TIME
29:55		<p>LOGO: AMERICAN COUNTRY COUNTDOWN</p> <p>#14 EARLY IN THE MORNING AND LATE AT NIGHT (A) Hank Williams, Jr.</p> <p>OLDIE: MAJOR MOVES (B) Hank Williams, Jr.</p> <p>LOGO: MY KIND OF COUNTRY, MY KIND OF MUSIC</p>	07:18
37:13		<p style="text-align: center;">C-4</p> <p>NETWORK SPOT: TASTERS CHOICE/TRUE VALUE (out cue) Jingle ends cold after... "...and home centers."</p>	:30/:30
38:13		<p>LOCAL INSERT:</p>	:60
39:13		<p>LOGO: AMERICAN COUNTRY COUNTDOWN</p> <p>#13 I SANG DIXIE (B) Dwight Yoakam</p> <p>#12 BIG WHEELS IN THE MOONLIGHT (A/B) Dan Seals</p> <p>LOGO: MY KIND OF COUNTRY, MY KIND OF MUSIC</p>	08:53
48:06		<p style="text-align: center;">C-5</p> <p>NETWORK SPOT: U.S. NAVY COLGATE TELEDISC (out cue) Voice out cold with... "...waiting to hear from you."</p>	:30 :90
50:06		<p>LOGO: AMERICAN COUNTRY COUNTDOWN</p> <p>#11 LONG SHOT (A/B) Baillie And The Boys</p> <p>ARCHIVE: YOU AND I () EDDIE RABBITT AND CRYSTAL GAYLE</p>	06:51
57:11		<p>THEME UP AND UNDER WITH TALK UNIT ENDING AT: 57:26 THEME TO: 57:50</p>	
57:50		<p style="text-align: center;">C-6</p> <p>LOCAL INSERT:</p>	2:00
59:50		<p>STATION I. D.:</p>	:10

SCHEDULED START TIME	ACTUAL TIME	ELEMENT	RUNNING TIME
00:00		<p><u>THEME AND OPENING OF PART IV</u></p> <p>#10 HOLD ME (S) K. T. Oslin</p> <p>CALENDAR: BEAUTIFUL DREAMER () Marty Robbins</p> <p>LOGO: MY KIND OF COUNTRY, MY KIND OF MUSIC</p>	07:22
07:22		<p>NETWORK SPOT: C-1 GREYHOUND/NESTLE QUIK (out cue) Jingle fades after... "...a long way."</p> <p>LOCAL INSERT:</p>	:30/:30 :60
09:22		<p>LOGO: AMERICAN COUNTRY COUNTDOWN</p> <p>#9 SONG OF THE SOUTH (A) Alabama</p> <p>OLDIE: ROLL ON (EIGHTEEN WHEELER) (A) Alabama</p> <p>LOGO: MY KIND OF COUNTRY, MY KIND OF MUSIC</p>	08:18
18:40		<p>NETWORK SPOT: C-2 ARMOUR FOODS/GREYHOUND (out cue) Jingle fades after... "...driving to us."</p> <p>LOCAL INSERT:</p>	:30/:30 :60
19:40		<p>LOGO: AMERICAN COUNTRY COUNTDOWN</p> <p>#8 BURNIN' A HOLE IN MY HEART (B/A) Skip Ewing</p> <p>#7 WHAT I'D SAY (A) Earl Thomas Conley</p> <p>LOGO: MY KIND OF COUNTRY, MY KIND OF MUSIC</p>	07:01
26:41		<p>NETWORK SPOT: C-3 MOTEL 6 (out cue) Jingle ends cold with... "...light on for ya'!"</p> <p>LOCAL INSERT:</p> <p>STATION I.O.:</p>	:60 :60 :10



ABC Watermark



3575 Cahuenga Blvd. W., Suite 555, Los Angeles, CA 90068
 Phone (818) 980-9490 FAX (213) 850-5832
 Outside the U.S. contact RADIO EXPRESS 1-213-850-1003

FOR WEEK ENDING: 1/14/89
 CYCLE NO: 891 PGM: 3 OF: 13
 DISC/HALF HOUR: 4B (backed w/1A)
 PAGE NO: 8

ABC RADIO NETWORKS

SCHEDULED START TIME	ACTUAL TIME	ELEMENT	RUNNING TIME
28:51		<p>LOGO: AMERICAN COUNTRY COUNTDOWN</p> <p>#6 HOLD ON (A LITTLE LONGER) (B) Steve Wariner</p> <p>#5 ALL THE REASONS WHY (B/A) Highway 101</p> <p>LOGO: MY KIND OF COUNTRY, MY KIND OF MUSIC</p>	08:45
37:36		<p style="text-align: center;">C-4</p> <p>NETWORK SPOT: CAMPBELL'S/TASTERS CHOICE (out cue) Jingle ends cold with... "...choice decaffeinated."</p>	:30/:30
38:36		<p>LOCAL INSERT:</p>	:60
39:36		<p>LOGO: AMERICAN COUNTRY COUNTDOWN</p> <p>#4 BLUE SIDE OF TOWN (B) Patty Loveless</p> <p>#3 DEEPER THAN THE HOLLER (B/A) Randy Travis</p> <p>LOGO: MY KIND OF COUNTRY, MY KIND OF MUSIC</p>	07:19
46:55		<p style="text-align: center;">C-5</p> <p>NETWORK SPOT: U.S. NAVY COLGATE TELEDISC (out cue) Voice out cold with... "...waiting to hear from you."</p>	:30 :90
48:55		<p>LOGO: AMERICAN COUNTRY COUNTDOWN</p> <p>#2 SHE'S CRAZY FOR LEAVING (A/B) Rodney Crowell</p> <p>#1 CHANGE OF HEART (B) The Judds</p>	08:55
57:13		<p>THEME UP AND UNDER WITH TALK UNIT ENDING AT: 57:50 THEME TO: 57:55</p>	
57:55		<p style="text-align: center;">C-6</p> <p>LOCAL INSERT: ***** *TOPICAL PROMOS ARE LOCATED* * AT THE END OF SIDE 4-A * *****</p>	2:00
59:55		<p>STATION I. D.:</p>	:10

FORMAT AND COMMERCIAL CLOCK

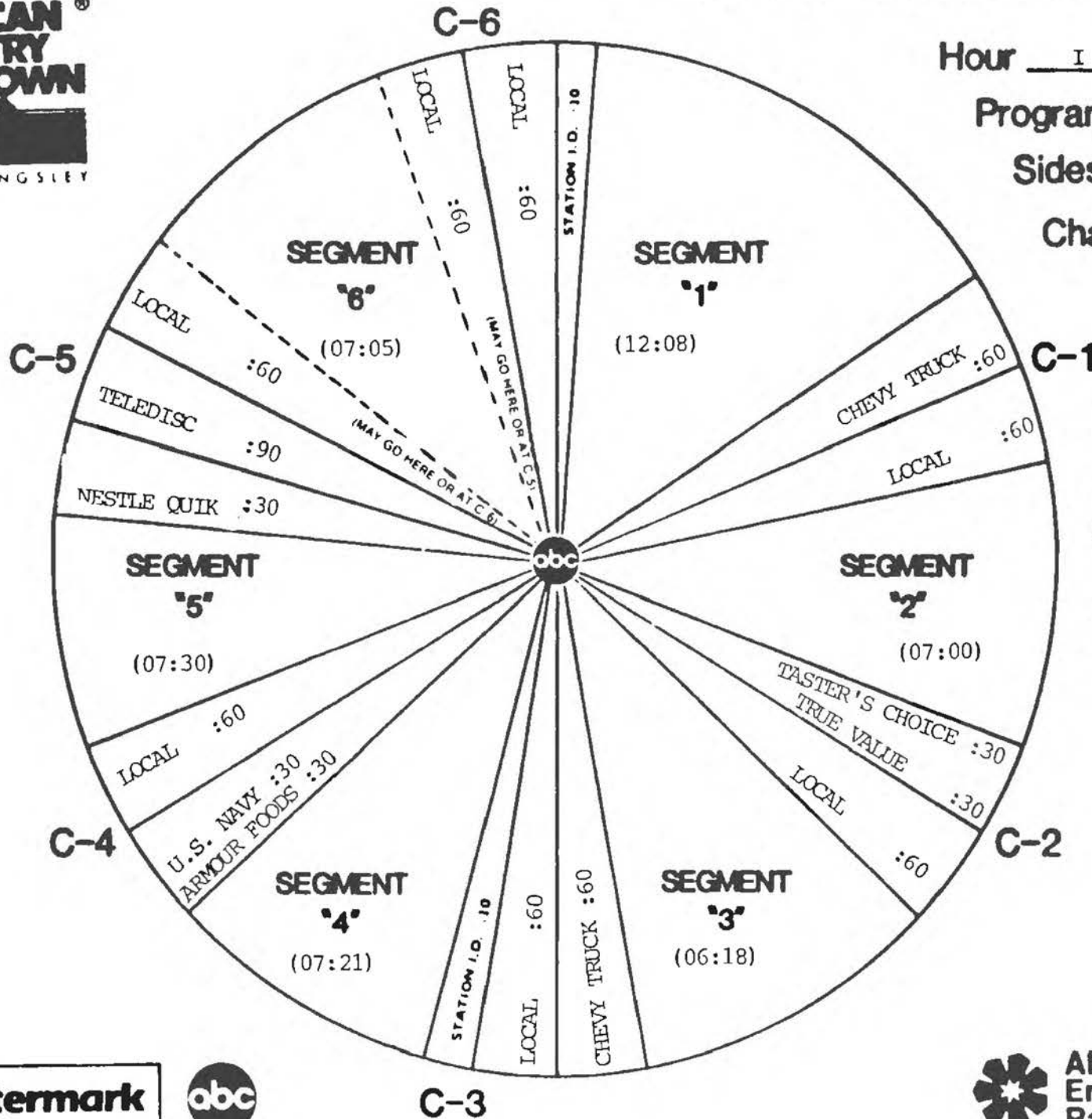


Hour I

Program 891-3

Sides 1A and 1B

Chart Date 1/14/89



Local minutes available 6

Network minutes used 6

ABC Watermark



FORMAT AND COMMERCIAL CLOCK

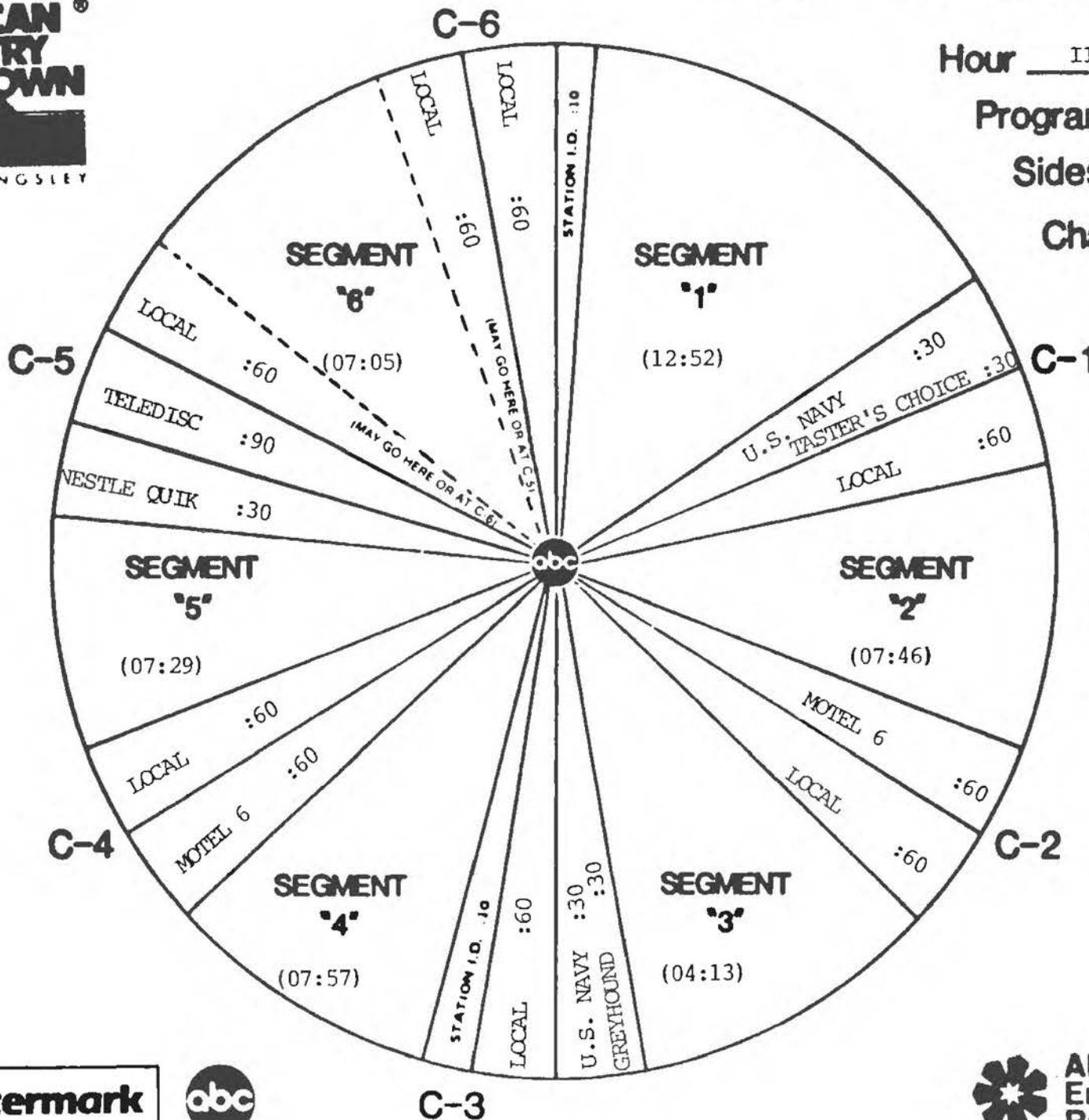


Hour II

Program 891-3

Sides 2A and 2B

Chart Date 1/14/89



Local minutes available 6

Network minutes used 6

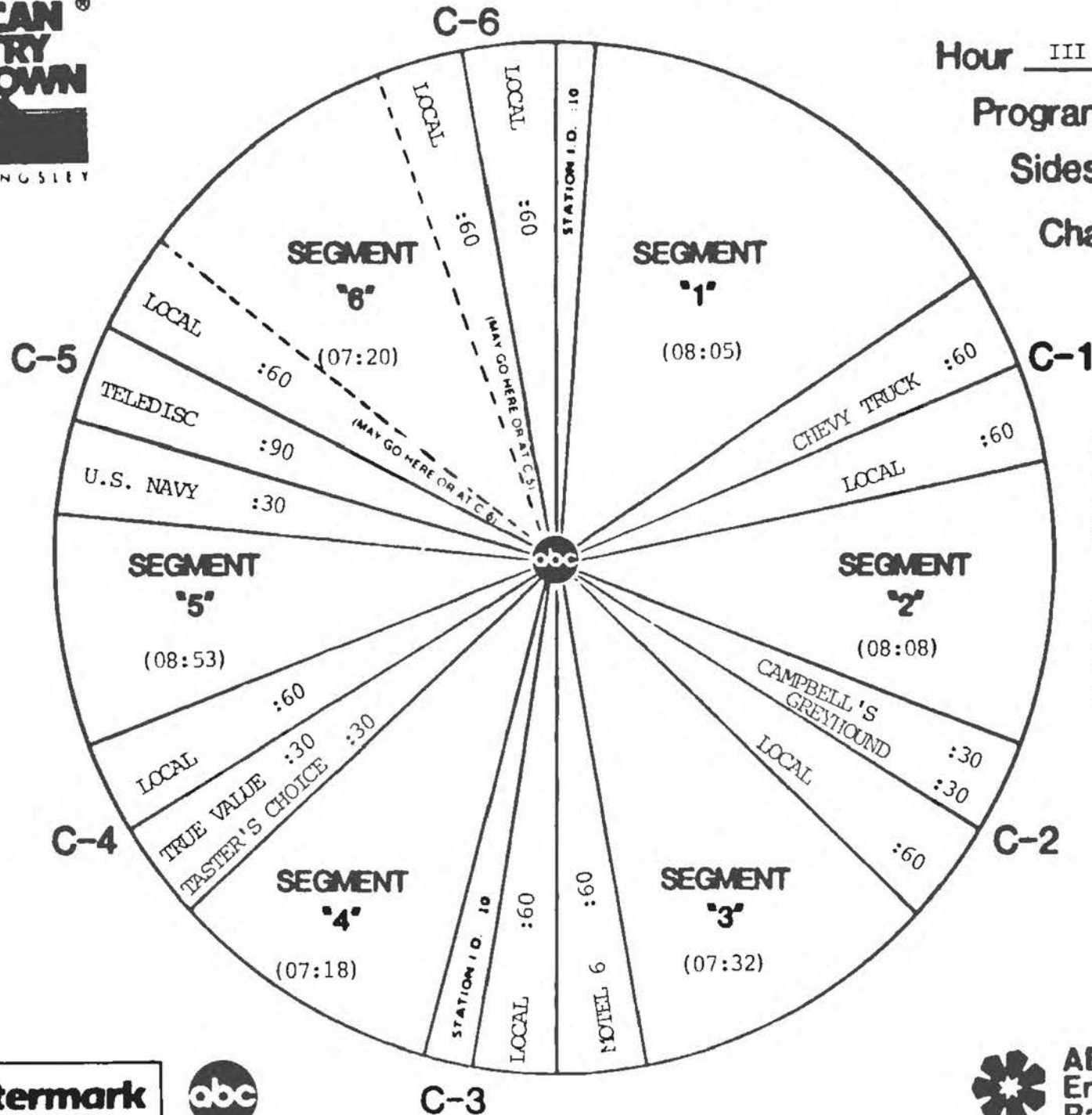
ABC Watermark



FORMAT AND COMMERCIAL CLOCK



Hour III
 Program 891-3
 Sides 3A and 3B
 Chart Date 1/14/89



Local minutes available 6
 Network minutes used 6

ABC Watermark



FORMAT AND COMMERCIAL CLOCK

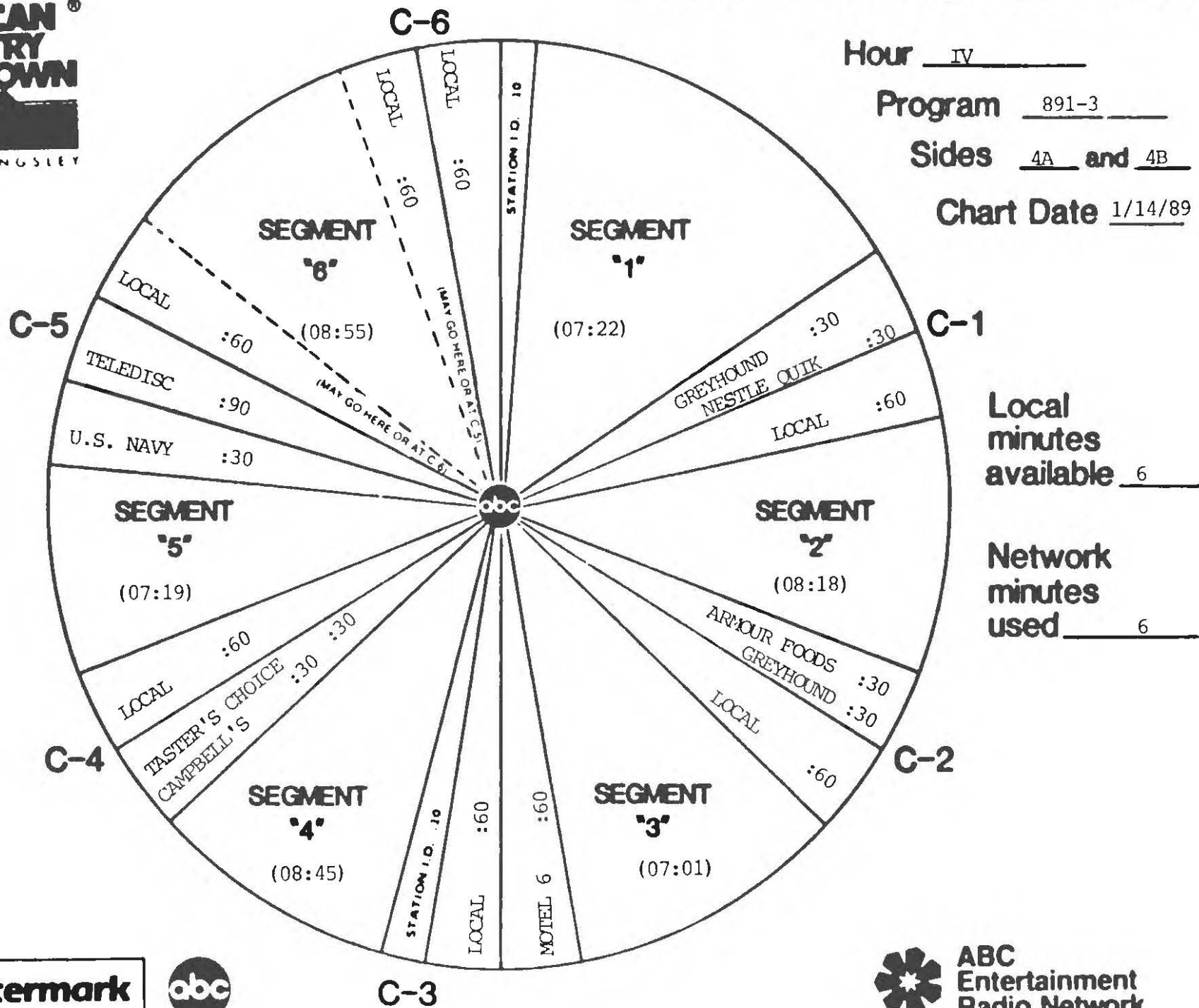


Hour IV

Program 891-3

Sides 4A and 4B

Chart Date 1/14/89



Local minutes available 6

Network minutes used 6

ABC Watermark



AMERICAN COUNTRY COUNTDOWN



ABC Watermark
3575 Cahuenga Blvd West #555
Los Angeles, CA 90068
(818) 980-9490

TOPICAL PROMOS

TOPICAL PROMOS FOR SHOW #891-3 ARE LOCATED AT THE END OF SIDE 4A
DO NOT USE AFTER SHOW #891-3

1. "HOLD ME" GIVES K.T. OSLIN A HOLD ON #1 :27

Hi, I'm Bob Kingsley with American Country Countdown...and last week the song called "Hold Me" gave K.T. Oslin a firm hold on her third #1 hit. Now, there was a load of top talent in the top five with songs climbing including The Judds, Rodney Crowell, Randy Travis and Baillie And The Boys. They are all hoping to stake their claim at the top of Billboard's country chart. So join us and find out who's on top of the heap, this week on American Country Countdown.

2. JUDDS CONTINUE THEIR NEVER ENDING SUCCESS STORY :27

Hi, this is Bob Kingsley. And this week on ACC, the act to watch is the mother-daughter duo that has been living the never ending success story. You see, since first appearing on our survey in 1983, the Judds have scored 15 chart hits placing all but one of them in the top ten...and they're just one notch away from their 12th number 1 hit. Find out if the Judds add another chapter to their never-ending success story this week on American Country Countdown.

3. SWARM OF DEBUT SONGS INTO FORTY :23

Hi, I'm Bob Kingsley with American Country Countdown...and last week a swarm of five debuts buzzed into the action of our survey. Leading the charge was the latest from Southern Pacific followed by the current hits from the Sweethearts of the Rodeo, Ronnie Milsap, Anne Murray and T. Graham Brown. Check on the progress of these stars and find out where all your favorite singers and songs rank in the top 40 this week on American Country Countdown.

4. BIG NAMES SET TO DEBUT :24

Hello, I'm Bob Kingsley and this week on ACC, some of the biggest names in country music could debut their songs into our survey of the biggest country hits. The stars that look top 40 bound are T. G. Sheppard, Ricky Van Shelton, Reba McEntire and George Jones. Find out if they make it and follow all the action as we count 'em down to that number one hit in the nation this week on American Country Countdown.