



**PREMIERE**  
RADIO NETWORKS

15260 VENTURA BOULEVARD  
5TH FLOOR  
SHERMAN OAKS, CALIFORNIA 91403-5339  
TELEPHONE (818) 377-5300  
FAX (818) 377-5333

Website: <http://www.premiereradio.com>

**Show Code: #03-21**  
**Show Date: Weekend of May 24-25, 2003**  
**Disc One/Hour One**

---

Seg. 1 Track 1  
Open Billboards: Generic  
Content: #20 "COME AWAY WITH ME" - Norah Jones  
#19 "LIGHTS OUT" - Lisa Marie Presley  
Commercials: :60 Flonase  
:30 Twix Candy Bar  
Outcue: "...July 5<sup>th</sup>, 2003"

**Segment Time: 9:50**

Local Break: 1:30

---

Seg. 2 Track 2  
Content: #18 "HARDER TO BREATHE" - Maroon 5  
EXT: "STUCK IN A MOMENT YOU CAN'T GET OUT OF" - U2  
#17 "IN THIS LIFE" - Chantal Kreviazuk  
Commercials: :30 French's Mustard  
:30 Ford/FQC - Used  
:60 Thermal Carb  
Outcue: "...1-800-370-5311"

**Segment time: 14:06**

Local Break 1:00

---

Seg. 3 Track 3  
Content: #16 "PEACEKEEPER" - Fleetwood Mac  
EXT: "867-5309/JENNY" - Tommy Tutone  
Commercials: :30 Bikini Zone  
:60 Flonase  
Outcue: "...takes is Flonase"

**Segment time: 9:31**

Local Break 1:30

---

Seg. 4 Track 4  
Content: #15 "INTUITION" - Jewel  
LDD: "GRADUATION (FR.ENDS FOREVER)" - Vitamin C  
Commercials: :30 GM/May Incentive  
:30 Twix Candy Bar  
:60 Flonase  
Outcue: "...takes is Flonase"

**Segment time: 12:41**

Local Break 1:00

---

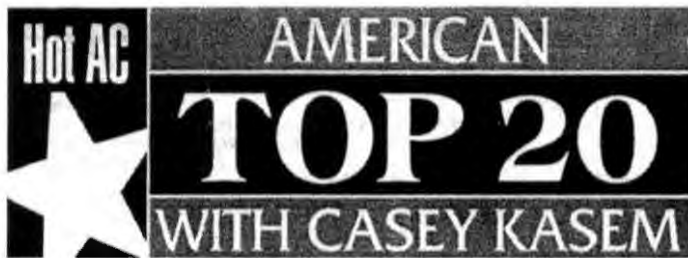
Seg. 5 Track 5  
Content: #14 "THE GAME OF LOVE" - Santana f/Michelle Branch  
EXT: "SOME LIKE IT HOT" - The Power Station

Outcue: Jingle out

**Segment time: 9:56**

Insert local ID over :06 jingle bed

END OF DISC ONE --- DISC TWO STARTS AT SEGMENT SIX



**PREMIERE**  
RADIO NETWORKS

15260 VENTURA BOULEVARD

5TH FLOOR

SHERMAN OAKS, CALIFORNIA 91403-5339

TELEPHONE (818) 377-5300

FAX (818) 377-5333

Website: <http://www.premiereradio.com>

Show Code: #03-21

Show Date: Weekend of May 24-25, 2003

Disc Two/Hour Two

Seg. 6 Track 1

Content: #13 "YOUR BODY IS A WONDERLAND" - John Mayer

#12 "BRING ME TO LIFE" - Evanescence

Commercials: :60 Go RV'ing

:30 Ovaltine

Outcue: "...more Ovaltine please"

**Segment time: 10:10**

Local Break 1:30

Seg. 7 Track 2

Content: #11 "SYMPATHY" - The Goo Goo Dolls

EXT: "STRAIGHT FROM THE HEART" - Bryan Adams

Commercials: :30 Twix Candy Bar

:60 Flonase

:30 Jiffy Lube

Outcue: "...well oiled machine (music out)"

**Segment time: 9:18**

Local Break 1:00

Seg. 8 Track 3

Contents: #10 "PICTURE" - Kid Rock f/Sheryl Crow

EXT: "LEARN TO FLY" - Foo Fighters

#9 "CALLING ALL ANGELS" - Train

Commercials: :30 Ford/FQC - Used

:30 French's Mustard

:30 Twix Candy Bar

Outcue: "...July 5<sup>th</sup>, 2003"

**Segment time: 15:16**

Local Break 1:30

Seg. 9 Track 4

Content: #8 "WHY GEORGIA" - John Mayer

LDD: "WHEREVER YOU WILL GO" - The Calling

Commercials: :60 Flonase

:30 First Response Pr

:30 Nature's Cure

Outcue: "...to fight acne (music out)"

**Segment time: 11:59**

Local Break 1:00

Seg. 10 Track 5

Content: EXT: "IF YOU LEAVE" - OMD

#7 "THE REMEDY (I WON'T WORRY)" - Jason Mraz

Outcue: Jingle out

**Segment Time: 8:04**

Insert local ID over :06 jingle bed

END OF DISC TWO -- DISC THREE STARTS AT SEGMENT 11



**PREMIERE**  
**RADIO NETWORKS**  
 15260 VENTURA BOULEVARD  
 5TH FLOOR  
 SHERMAN OAKS, CALIFORNIA 91403-5339  
 TELEPHONE (818) 377-5300  
 FAX (818) 377-5333  
 Website: <http://www.premiereradio.com>

**Show Number: #03-21**  
**Show Date: Weekend of May 24-25, 2003**  
**Disc Three/Hour Three**

Seg. 11 Track 1  
 Content: #6 "BIG YELLOW TAXI" – Counting Crows f/Vanessa Carlton  
 EXT: "I DON'T WANT TO MISS A THING" - Aerosmith  
 Commercials: :60 Thermal Carb  
 :30 GM/May Incentive  
 Outcue: "...In the morning (sung)"  
**Segment time: 10:31**  
 Local Break 1:30

Seg. 12 Track 2  
 Content: #5 "CLOCKS" – Coldplay  
 EXT: "DAMN, I WISH I WAS YOUR LOVER" – Sophie B. Hawkins  
 Commercials: :30 Jiffy Lube  
 :30 Bikini Zone  
 :60 Flonase  
 Outcue: "...takes is Flonase"  
**Segment time: 10:57**  
 Local Break 1:00

Seg. 13 Track 3  
 Content: #4 "I'M WITH YOU" – Avril Lavigne  
 LDD: "THERE YOU'LL BE" – Faith Hill  
 Commercials: :60 Fat Inferno  
 :30 French's Mustard  
 Outcue: "...like French's"  
**Segment time: 11:11**  
 Local Break 1:30

Seg. 14 Track 4  
 Content: #3 "WHEN I'M GONE" – 3 Doors Down  
 EXT: "ONE HEADLIGHT" - Wallflowers  
 Commercials: :30 Ovaltine  
 :60 Flonase  
 :30 Twix Candy Bar  
 Outcue: "...July 5<sup>th</sup>, 2003"  
**Segment time: 11:24**  
 Local Break 1:00

Seg. 15 Track 5  
 Content: #2 "DRIFT AWAY" – Uncle Kracker f/Dobie Gray  
 #1 "UNWELL" – Matchbox Twenty  
 Close Billboards: Generic  
 Outcue: "...TM Century Hit Discs."  
**Segment Time: 10:14**     **Theme out: 10:44**

END OF DISC THREE  
 \*\*\*American Top 20 show promos are on Track 6 & 7 & 8\*\*\*