

12655 North Central Expy., Suite 800
 Dallas, TX 75243
 Phone 972.239.6220
 Fax 972.239.0220

Show Code: #00-07
Date: 2/12/00 – 2/13/00
Disc One/Hour One

Track 1
 Seg. 1
 Open Billboards: Wal-Mart/Music Dept.
 Content: #20 "Falls Apart" – Sugar Ray
 #19 "Steal My Sunshine" – Len
 Ext "Love Will Keep Us Alive" - Eagles
 Commercials: :30 Wal-Mart, Rock Music Department
 :30 Clorox, Glad Trash Bags
 :30 US Navy, Recruitment
 Outcue: "...the US Navy."

Segment Time: 14:28
 Local Break: 1:30

Seg. 2
 Track 2
 Content: #18 "Never Let You Go" – Third Eye Blind
 Ext "Two Out Of Three..." – Meatloaf
 #17 "Everything You Want" – Vertical Horizon
 Commercials: :30 Robert Half, Office Team/Employment
 :30 Buena Vista, Tarzan
 :30 Red Lobster, Restaurant
 :30 Steel Alliance, Safety
 Outcue: "...the Steel Alliance."

Segment time: 15:38
 Local Break 1:00

Seg. 3
 Track 3
 Content: #16 "Learn To Fly" – Foo Fighters
 Ext "Time Of Your Life" – Green Day
 Commercials: :30 Wrigley, Juicy Fruit Gum
 :30 P&G, Pampers
 :30 P&G, Mr Clean
 Outcue: "...easy on you."

Segment time: 8:52
 Local Break 1:30

Seg. 4
 Track 4
 Content: #15 "Out Of My Head" – Fastball
 Ldd "Someday" – Maria Carey
 Commercials: :30 Hershey, Kit Kat
 :30 Wal-Mart, Urban Music Department
 :30 Red Lobster, Restaurant
 :30 US Navy, Recruitment
 Outcue: "...the US Navy."

Segment time: 11:01
 Local Break 1:00

Seg. 5
 Track 5
 Content: #14 "The Great Beyond" - REM
 Outcue: Jingle out

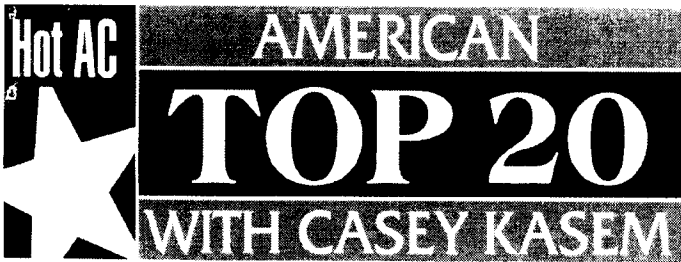
Segment time: 4:48

Insert local ID over :06 jingle bed

END OF DISC ONE ---- DISC TWO STARTS AT SEGMENT SIX

America's Top Hits for Monday (Madonna)is Track 6

America's Top Hits for Tuesday (Green Day) is Track 7



12655 North Central Expy., Suite 800
 Dallas, TX 75243
 Phone 972.239.6220
 Fax 972.239.0220

Show Code: #00-07
Date: 2/12/00 – 2/13/00
Disc Two/Hour Two

Seg. 6
 Track 1
 Content: #13 "LA Song" – Beth Hart
 Ext "Close To You" – Maxi Priest
 Commercials: :30 Robert Half, Office Team/Employment
 :30 Clorox, Glad Trash Bags
 :30 Wrigley, Juicy Fruit Gum
 Outcue: "...Juicy Fruit."
Segment time: 10:54
 Local Break 1:30

Seg. 7
 Track 2
 Content: #12 "She's So High" – Tal Bachman
 Ext "Diamonds & Pearls" - Prince
 Commercials: :30 P&G, Mr Clean
 :30 Red Lobster, Restaurant
 :30 Wal-Mart, Rock Music Department
 :30 P&G, Pampers
 Outcue: "...skin their in."
Segment time: 10:28
 Local Break 1:00

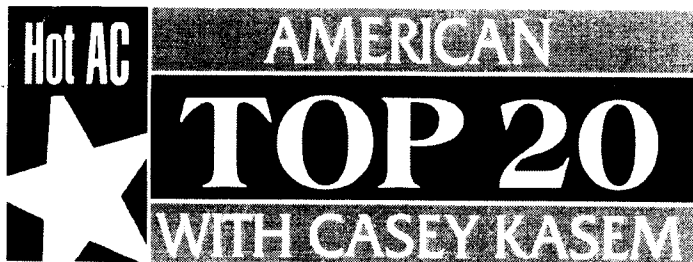
Seg. 8
 Track 3
 Contents: #11 "Someday" – Sugar Ray
 Ldd "All My Life" – Ronstadt/Neville
 #10 "Take A Picture" - Filter
 Commercials: :30 Ross Laboratories, Clear Eyes
 :30 Clorox, Glad Trash Bags
 :30 Hershey, Kit Kat
 Outcue: "...Kit Kat Bar."
Segment time: 15:28
 Local Break 1:30

Seg. 9
 Track 4
 Content: #09 "Brand New Day" – Sting
 #08 "That's The Way It Is" – Celine Dion
 Commercials: :30 Wal-Mart, Urban Music Department
 :30 Buena Vista, Tarzan
 :30 Wrigley, Juicy Fruit Gum
 :30 Clorox, Hidden Valley Singles
 Outcue: "...anytime, any place."
Segment time: 11:51
 Local Break 1:00

Seg. 10
 Track 5
 Content: #07 "I Need To Know" – Marc Anthony
 Ext "I Wanna Go Back" – Eddie Money
 Outcue: Jingle out
Segment Time: 8:29

Insert local ID over :06 jingle bed

END OF DISC TWO -- DISC THREE STARTS AT SEGMENT 11
 America's Top Hits for Wednesday (Heart) is Track 6
 America's Top Hits for Thursday (Blondie) is Track 7



12655 North Central Expy., Suite 800
Dallas, TX 75243
Phone 972.239.6220
Fax 972.239.0220

Show Code: #00-07
Date: 2/12/00 – 2/13/00
Disc Three/Hour Three

Seg. 11
Track 1
Content: #06 "Hanginaround" – Counting Crows
Ext "Modern Love" – David Bowie
Commercials: :30 Robert Half, Office Team/Employment
:30 Clorox, Glad Trash Bags
:30 US Navy, Recruitment
Outcue: "...the US Navy."
Segment time: 10:18
Local Break 1:30

Seg. 12
Track 2
Content: #05 "Black Balloon" – Goo Goo Dolls
Ext "Heartbreaker" – Pat Benatar
Commercials: :30 Red Lobster, Restaurant
:30 Buena Vista, Tarzan
:30 Wrigley, Juicy Fruit Gum
:30 Steel Alliance, Safety
Outcue: "...The Steel Alliance."
Segment time: 10:16
Local Break 1:00

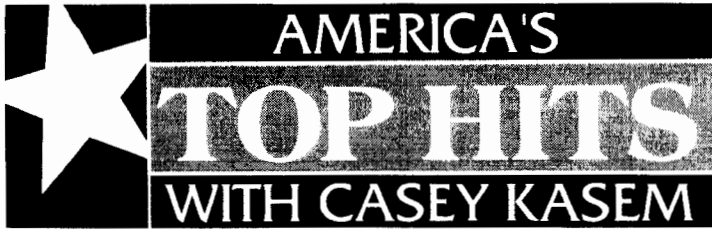
Seg. 13
Track 3
Content: #04 "Meet Virginia" – Train
Ldd "I Will Always Love You" – Whitney Houston
Commercials: :30 Wal-Mart, Rock Music Department
:30 P&G, Mr Clean
:30 US Navy, Recruitment
Outcue: "...The US Navy."
Segment time: 12:14
Local Break 1:30

Seg. 14
Track 4
Content: #03 "I Knew I Loved You" – Savage Garden
Ext "Angel Of Harlem" – U2
Commercials: :30 Robert Half, Office Team/Employment
:30 Wrigley, Juicy Fruit Gum
:30 Clorox, Glad Trash Bags
:30 Buena Vista, Tarzan
Outcue: "...today...rated G."
Segment time: 9:58
Local Break 1:00

Seg. 15
Track 5
Content: #02 "Then The Morning Comes" – Smash Mouth
#01 "Smooth" – Santana f/Rob Thomas
Close Billboards: Wrigley/Juicy Fruit
Outcue: "...TM Century Hit Disc's."
Segment Time: 9:37

END OF DISC THREE

America's Top Hits for Friday (John Lennon) is on Track 8



W E E K D A Y F E A T U R E



12655 North Central Expy., Suite 800
 Dallas, TX 75243
 Phone 972.239.6220
 Fax 972.239.0220

Summary of America's Top Hits

"America's Top Hits" segments are included at the ends of every disc/hour. Please refer to the disc number, track, content, outcue and times listed below.

Show Code: #00-08

Week of: 2/14/00

MONDAY

Disc 1, Track 6

Show 1:
 Incue: Jingle in
 Content: "Take A Bow" - Madonna
 Commercial: :30 Priceline.Com, Online Travel :30 Wyndham Hotels, Hotels
 Outcue: "...I'm Casey Kasem."
 Total Time: 6:42

TUESDAY

Disc 1, Track 7

Show 2:
 Incue: Jingle in
 Content: "Time Of Your Life" - Green Day
 Commercial: :60 Echostar Communicati, Dish Network
 Outcue: "...I'm Casey Kasem."
 Total Time: 4:39

WEDNESDAY

Disc 2, Track 6

Show 3:
 Incue: Jingle in
 Content: "These Dream" - Heart
 Commercial: :30 Wyndham Hotels, Hotels :30 Officemax.com, Office Supplies - Intern
 Outcue: "...I'm Casey Kasem."
 Total Time: 6:01

THURSDAY

Disc 2, Track 7

Show 4:
 Incue: Jingle in
 Content: "Rapture" - Blondie
 Commercial: :30 Priceline.Com, Online Travel :30 Internal Revenue Ser, E-File Tax Return
 Outcue: "...I'm Casey Kasem."
 Total Time: 7:55

FRIDAY

Disc 3, Track 8

Show 5:
 Incue: Jingle in
 Content: "Woman" - John Lennon
 Commercial: :60 Echostar Communicati, Dish Network
 Outcue: "...I'm Casey Kasem."
 Total Time: 5:20