



TO: AMERICAN TOP 40 SUBSCRIBERS

FROM: ABC WATERMARK

DATE: 01/06/86

RE: LOCAL COMMERCIAL AVAILABILITY/GUEST HOST

IN THIS WEEK'S AMERICAN TOP 40 PROGRAM #861-2 FOR AIR 01/11-12/86, CHARLIE VAN DYKE WILL BE SITTING IN FOR CASEY KASEM. CASEY WILL BE BACK NEXT WEEK FOR SHOW #861-3 AIRING 01/18-19/86.

THERE IS AN ADDITIONAL SIX MINUTES OF LOCAL COMMERCIAL AVAILABILITY ON PROGRAM #861-2.

THERE ARE THIRTY SECONDS IN ALL HOURS AT C-1, C-3 AND C-5.



ABC Watermark



01/11/86
 FOR WEEK ENDING: _____
 CYCLE NO. 861 PROGRAM 2 OF 13
 DISC & HALF HOUR NO. 1A
 PAGE NO. 1

3575 Cahuenga Blvd. W., Suite 555, Los Angeles, CA 90088

ABC Contemporary Radio Network

SCHEDULED START TIME	ACTUAL TIME	ELEMENT	RUNNING TIME
00:00		THEME AND OPENING OF PART I THEME: "THEME FROM AMERICAN TOP 40" (MARKWATER MUSIC/BMI) #40 TARZAN BOY (B) Baltimora #39 KYRIE (B) Mr. Mister	09:02
09:02		NETWORK SPOT: C-1 Mediquell (OUT CUE) Voice out cold with... "...formula Mediquell."	:30
09:32		LOCAL INSERT:	1:30
11:02		LOGO: AMERICAN TOP 40, <u>then Charlie I.D.'s himself</u> #38 LIFE IN A NORTHERN TOWN (B) The Dream Academy	04:26
15:28		NETWORK SPOT: C-2 American Floral/Phisoderm (OUT CUE) Voice out cold with... "...into the clean teens."	30/30
16:28		LOCAL INSERT:	:60
17:28		LOGO: AMERICAN TOP 40 #37 THE SUN ALWAYS SHINES ON T.V. (B) a-ha #36 <u>LIVING IN AMERICA</u> (A&B) James Brown	10:37
28:05		NETWORK SPOT: C-3 Halls (OUT CUE) Voice out cold with... "...only as directed."	:30
28:35		LOCAL INSERT:	1:30
30:05		STATION I. D.: OVER FOR SIDE 1B	:10



ABC Watermark



FOR WEEK ENDING: 01/11/86
CYCLE NO. 861 PROGRAM 2 OF 13
DISC & HALF HOUR NO. 1B PAGE NO. 2

575 Cahuenga Blvd. W., Suite 555, Los Angeles, CA 90068

ABC Contemporary Radio Network

SCHEDULED START TIME	ACTUAL TIME	ELEMENT	RUNNING TIME
30:15		LOGO: AMERICAN TOP 40 #35 EVERYTHING IN MY HEART (A) Corey Hart #34 A LOVE BIZARRE (A) Sheila E.	08:50
39:05		C-4 NETWORK SPOT: American Floral/Care*Free (OUT CUE) Jingle ends cold after... "...Nabiso (sting)."	30/30
40:05		LOCAL INSERT:	:60
41:05		LOGO: AMERICAN TOP 40 STATION MENTIONS #33 THE SWEETEST TABOO (A) Sade #32 OBJECT OF MY DESIRE (B) Starpoint	10:04
51:09		C-5 NETWORK SPOT: Perrier/U.S. Army/L'Eggs (OUT CUE) Jingle ends cold after... "...hose from L'Eggs."	30/30 30
52:39		Local Insert:	:30
53:09		LOGO: AMERICAN TOP 40 #31 HOW WILL I KNOW (B) Whitney Houston	04:41
57:39		THEME UP AND UNDER WITH TALK UNIT ENDING AT: 57:50 THEME TO: 57:50	
57:50		C-6 LOCAL INSERT:	2:00
59:50		STATION I. D.:	:10

FORMAT AND COMMERCIAL CLOCK

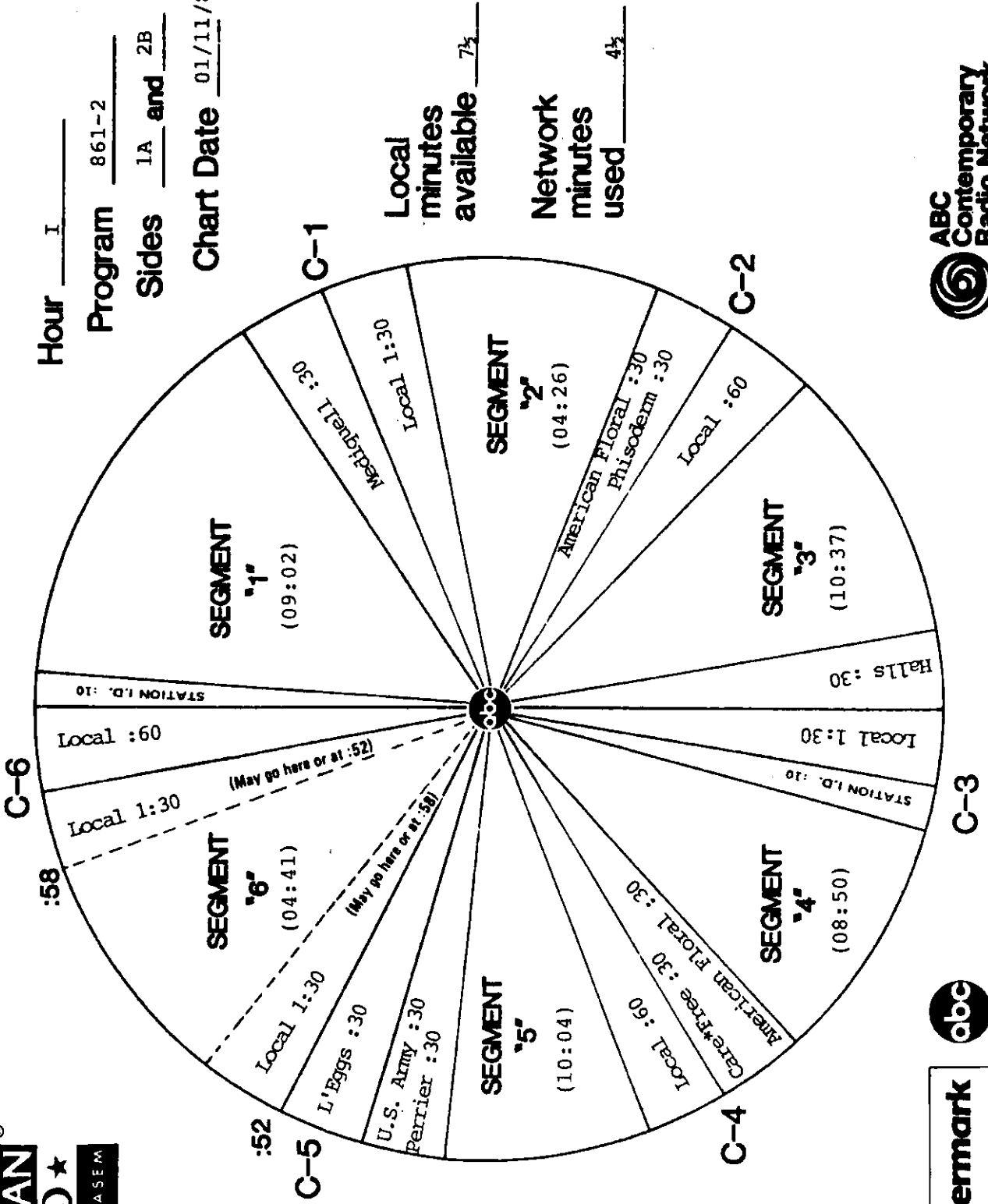


Hour I

Program 861-2

Sides 1A and 2B

Chart Date 01/11/86



AMERICAN
★ TOP40 ★

ABC Watermark



FOR WEEK ENDING: 01/11/86
CYCLE NO. 861 PROGRAM 2 OF 13
DISC & HALF HOUR NO. 2A
PAGE NO. 4

3575 Cahuenga Blvd. W., Suite 555, Los Angeles, CA 90068

ABC Contemporary Radio Network

SCHEDULED START TIME	ACTUAL TIME	ELEMENT	RUNNING TIME
00:00		THEME AND OPENING OF PART II #30 FACE THE FACE (B) Pete Townsend #29 SEX AS A WEAPON (A) Pat Benatar	08:22
08:22		NETWORK SPOT: Flintstones C-1 (OUT CUE) Jingle ends cold with... "...strong and growing."	:30
08:52		LOCAL INSERT:	1:30
10:22		LOGO: AMERICAN TOP 40, <u>then Charlie I.D.'s himself</u> #28 SIDEWALK TALK (A&B) Jellybean <u>LDD:</u> TIME IN A BOTTLE (B) Jim Croce	08:03
18:25		NETWORK SPOT: Mediquell/U.S. Army C-2 (OUT CUE) Voice out cold with... "...the U.S. Army."	30/30
19:25		LOCAL INSERT:	:60
20:25		LOGO: AMERICAN TOP 40, <u>then Charlie I.D.'s himself</u> #27 EVERYBODY DANCE (A) Ta Mara & The Seen #26 WHEN THE GOING GETS TOUGH, THE TOUGH GET GOING (A) Billy Ocean	08:27
28:52		NETWORK SPOT: Flinstones C-3 (OUT CUE) Jingle ends cold with... "...strong & growing."	:30
29:22		LOCAL INSERT:	1:30
30:52		STATION I. D.: OVER FOR SIDE 2B	:10

AMERICAN
★ TOP40 ★

ABC Watermark



FOR WEEK ENDING: 01/11/86
CYCLE NO. 861 PROGRAM 2 OF 13
DISC & HALF HOUR NO. 2B
PAGE NO. 5

3575 Cahuenga Blvd. W., Suite 555, Los Angeles, CA 90068

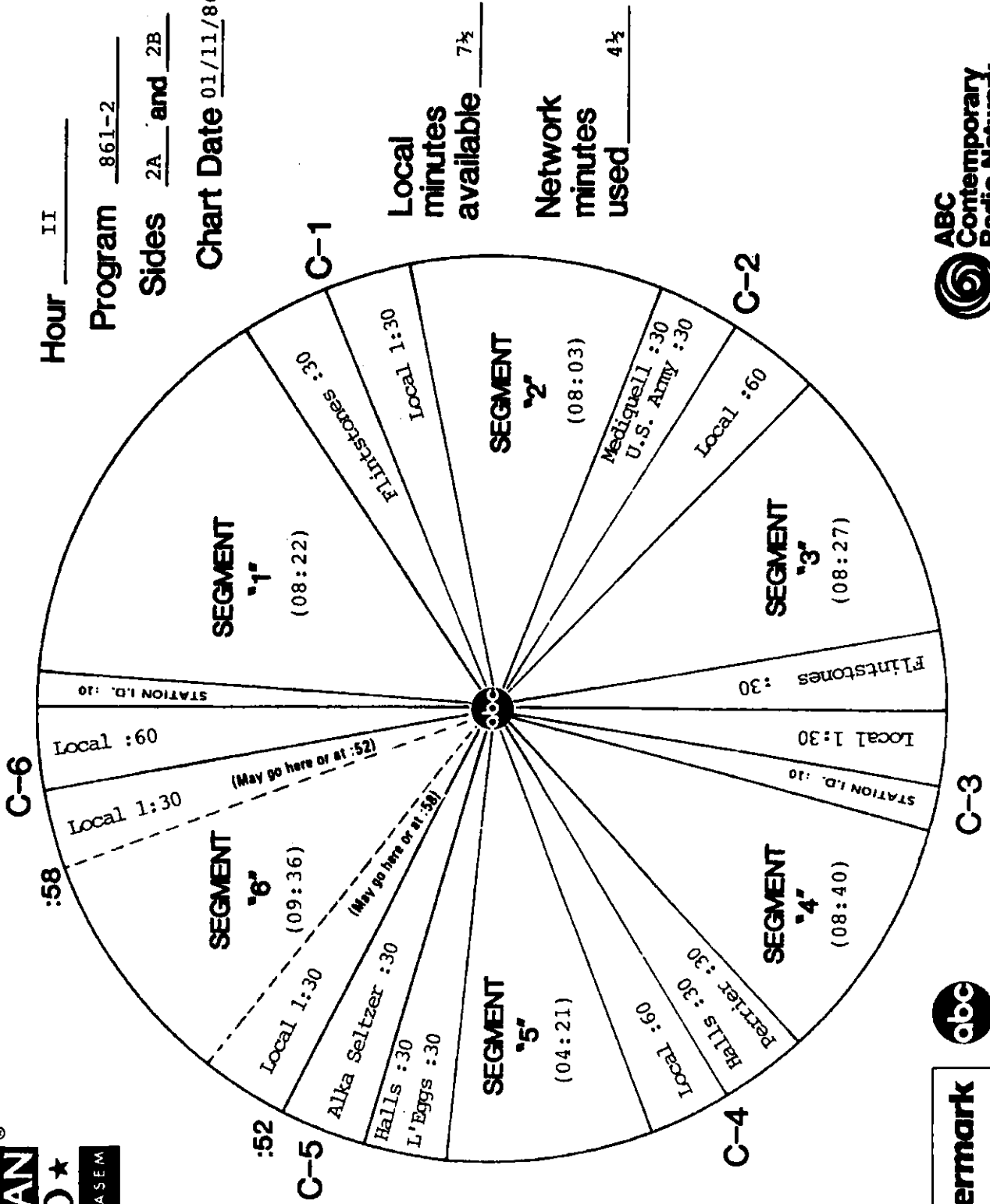
ABC Contemporary Radio Network

SCHEDULED START TIME	ACTUAL TIME	ELEMENT	RUNNING TIME
31:02		LOGO: AMERICAN TOP 40, <u>then Charlie I.D.'s himself</u> #25 GOODBYE (B) Night Ranger #24 <u>EMERGENCY</u> (B) Kool. & The Gang	08:40
39:42		C-4 NETWORK SPOT: Perrier/Halls (OUT CUE) Voice out cold with... "...only as directed."	30/30
40:42		LOCAL INSERT:	:60
41:42		LOGO: AMERICAN TOP 40 STATION MENTIONS #23 PERFECT WAY (A) Scritti Politti	04:21
46:03		C-5 NETWORK SPOT: L'Eggs/Halls/Alka Seltzer (OUT CUE) Voice out cold with... "...use only as directed."	30/30 30
47:33		Local Insert:	:30
48:03		LOGO: AMERICAN TOP 40, <u>then Charlie I.D.'s himself</u> #22 YOU'RE A FRIEND OF MINE (A&B) Clarence Clemons & Jackson Browne <u>CORRECTION: ACTS WITH INITIALS</u> #21 SLEEPING BAG (B) ZZ Top	09:36
57:28		THEME UP AND UNDER WITH TALK UNIT ENDING AT: 57:39 THEME TO: 57:50	
57:50		C-6 LOCAL INSERT:	2:00
59:50		STATION I. D.:	:10

FORMAT AND COMMERCIAL CLOCK



Hour 11
 Program 861-2
 Sides 2A and 2B
 Chart Date 01/11/86



ABC Watermark



ABC Watermark



FOR WEEK ENDING: 01/11/86
 CYCLE NO. 861 PROGRAM 2 OF 13
 DISC & HALF HOUR NO. 3A PAGE NO. 7

3575 Cahuenga Blvd. W., Suite 555, Los Angeles, CA 90068

ABC Contemporary Radio Network

SCHEDULED START TIME	ACTUAL TIME	ELEMENT	RUNNING TIME
00:00		THEME AND OPENING OF PART III #20 CONGA (B) Miami Sound Machine #19 SPIES LIKE US (PRO) Paul McCartney	08:37
08:37		C-1 NETWORK SPOT: Perrier (OUT CUE) Jingle fades after... "...soft drink...Perrier."	:30
09:07		LOCAL INSERT:	1:30
10:37		LOGO: AMERICAN TOP 40 STATION MENTIONS #18 GO HOME (A) Stevie Wonder	04:39
15:16		C-2 NETWORK SPOT: Care*Free/L'Eggs (OUT CUE) Jingle ends cold after... "...hose from L'Eggs."	30/30
16:16		LOCAL INSERT:	:60
17:16		LOGO: AMERICAN TOP 40 #17 LOVE IS THE SEVENTH WAVE (B) Sting #16 <u>IT'S ONLY LOVE</u> (PROC & B) Bryan Adams & Tina Turner	08:14
25:30		C-3 NETWORK SPOT: American Floral (OUT CUE) Voice out cold with... "...someone special, yourself."	:30
26:00		LOCAL INSERT:	1:30
27:30		STATION I. D.: OVER FOR SIDE 3B	:10



ABC Watermark



FOR WEEK ENDING: 01/11/86
 CYCLE NO. 861 PROGRAM 2 OF 13
 DISC & HALF HOUR NO. 3B PAGE NO. 8

3575 Cahuenga Blvd. W., Suite 555, Los Angeles, CA 90068

ABC Contemporary Radio Network

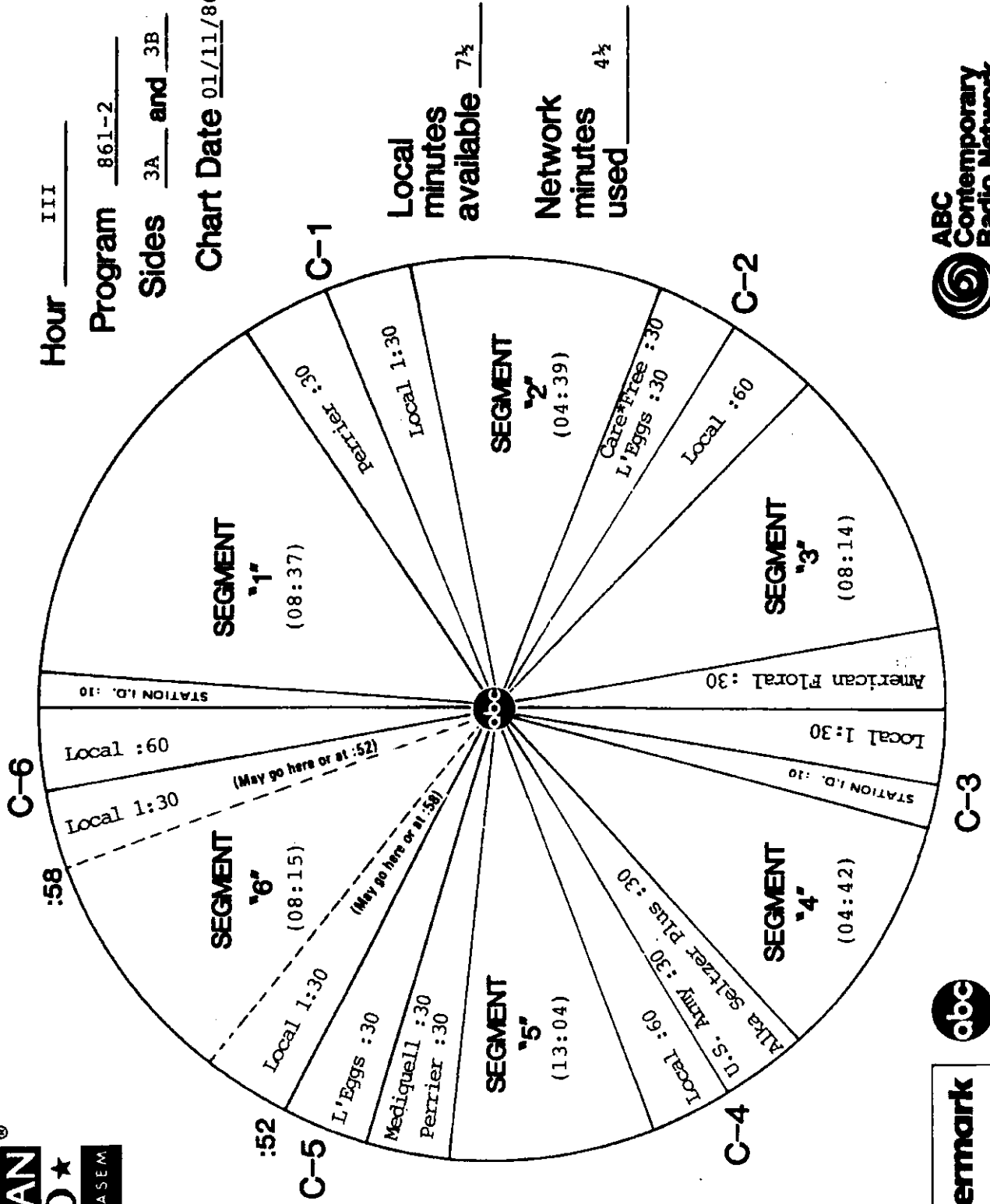
SCHEDULED START TIME	ACTUAL TIME	ELEMENT	RUNNING TIME
27:40		LOGO: AMERICAN TOP 40, <u>then Charlie I.D.'s himself</u> #15 ELECTION DAY (B) Arcadia	04:42
32:22		C-4 NETWORK SPOT: Alka Seltzer Plus/U.S. Army (OUT CUE) Voice out cold with... "...the U.S. Army."	30/30
33:22		LOCAL INSERT:	:60
34:22		LOGO: AMERICAN TOP 40, <u>then Charlie I.D.'s himself</u> #14 I'M YOUR MAN (A) Wham! #13 MY HOMETOWN (A) Bruce Springsteen #12 BURNING HEART (A&B) Survivor	13:04
47:26		C-5 NETWORK SPOT: Perrier/Mediquell/L'Eggs (OUT CUE) Jingle ends cold after... "...hose from L'Eggs."	30/30 30
48:56		Local Insert:	:30
49:26		LOGO: AMERICAN TOP 40, <u>then Charlie I.D.'s himself</u> #11 SEPARATE LIVES (A&B) Phil Collins with Marilyn Martin #10 WALK OF LIFE (A) Dire Straits	08:15
57:29		THEME UP AND UNDER WITH TALK UNIT ENDING AT: 57:41 THEME TO: 57:50	
57:50		C-6 LOCAL INSERT:	2:00
59:50		STATION I. D.:	:10

FORMAT AND COMMERCIAL CLOCK



Hour III
Program 861-2
Sides 3A and 3B

Chart Date 01/11/86



Local minutes available 7½
Network minutes used 4½



AMERICAN
★ TOP 40 ★

ABC Watermark



FOR WEEK ENDING: 01/11/86
CYCLE NO. 861 PROGRAM 2 OF 13
DISC & HALF HOUR NO. 4A PAGE NO. 10

3575 Cahuenga Blvd. W., Suite 555, Los Angeles, CA 90068

ABC Contemporary Radio Network

SCHEDULED START TIME	ACTUAL TIME	ELEMENT	RUNNING TIME
00:00		THEME AND OPENING OF PART IV #9 BROKEN WINGS (B) Mr. Mister #8 TALK TO ME (A) Stevie Nicks	09:11
09:11		C-1 NETWORK SPOT: U.S. Army (OUT CUE) Voice out cold with... "...the U.S. Army."	:30
09:41		LOCAL INSERT:	1:30
11:11		LOGO: AMERICAN TOP 40 STATION MENTIONS #7 TONIGHT SHE COMES (A) The Cars #6 <u>SMALL TOWN</u> (A) John Cougar Mellencamp	08:39
19:50		C-2 NETWORK SPOT: Care*Free/Mediquell (OUT CUE) Voice out cold with... "...formula Mediquell."	30/30
20:50		LOCAL INSERT:	:60
21:50		LOGO: AMERICAN TOP 40 #5 I MISS YOU (A) Klymaxx <u>LDD: YOU'RE THE INSPIRATION</u> (A&B) Chicago	09:27
31:17		C-3 NETWORK SPOT: Alka Seltzer (OUT CUE) Voice out cold with... "...use only as directed."	:30
31:47		LOCAL INSERT:	1:30
33:17		STATION I. D.: OVER FOR SIDE 4B	:10



ABC Watermark



FOR WEEK ENDING: 01/11/86
CYCLE NO. 861 PROGRAM 2 OF 13
DISC & HALF HOUR NO. 4B PAGE NO. 11

3575 Cahuenga Blvd. W., Suite 555, Los Angeles, CA 90068

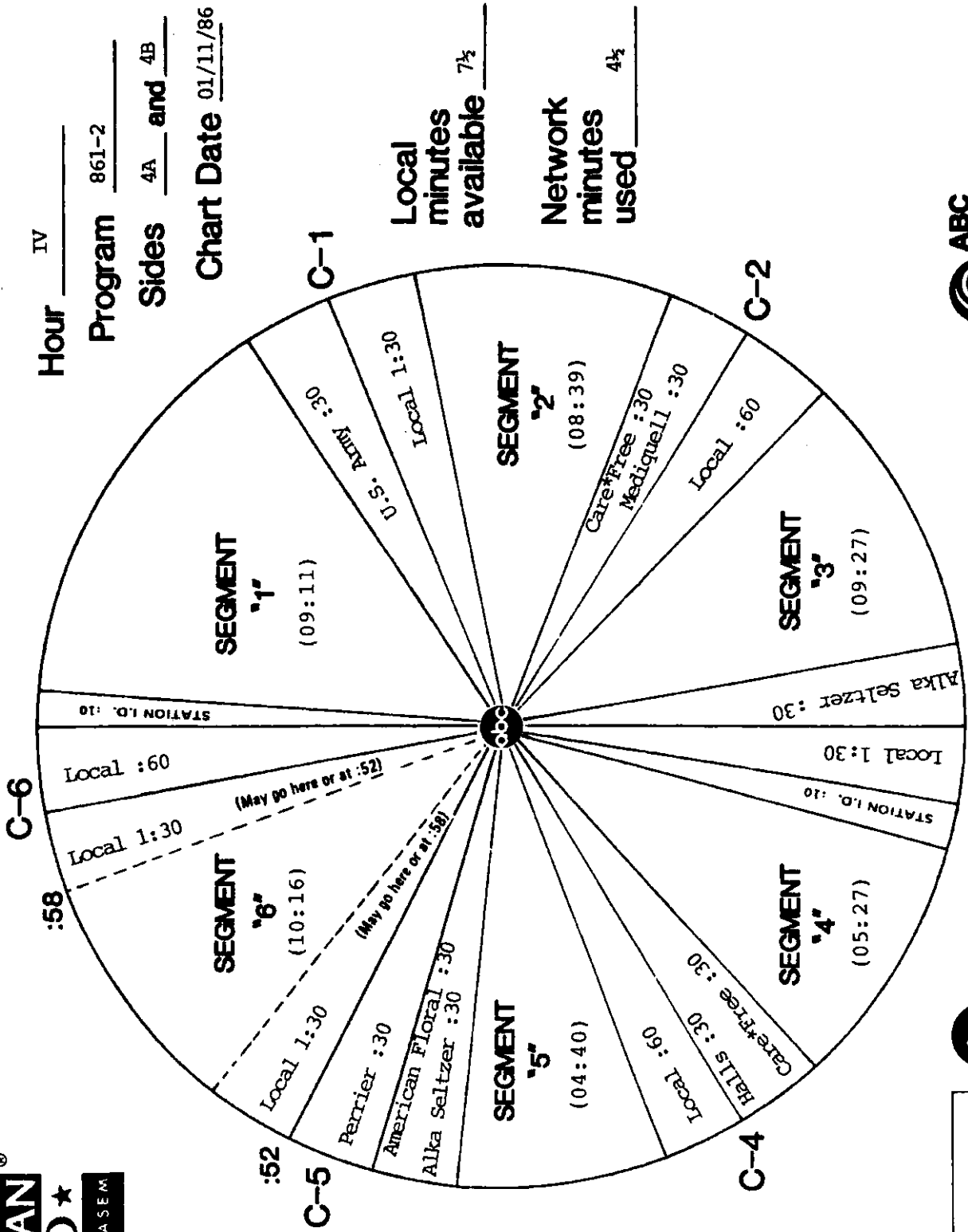
ABC Contemporary Radio Network

SCHEDULED START TIME	ACTUAL TIME	ELEMENT	RUNNING TIME
33:27		LOGO: AMERICAN TOP 40, <u>then Charlie I.D.'s himself</u> #4 ALIVE & KICKING (A) Simple Minds	05:27
38:54		C-4 NETWORK SPOT: Care*Free/Halls (OUT CUE) Voice out cold with... "...only as directed."	30/30
39:54		LOCAL INSERT:	:60
40:54		LOGO: AMERICAN TOP 40, <u>then Charlie I.D.'s himself</u> #3 THAT'S WHAT FRIENDS ARE FOR (A&B) Dionne & Friends	04:40
45:34		C-5 NETWORK SPOT: Alka Seltzer Plus/American Floral/Perrier (OUT CUE) Jingle fades after... "...soft drink...Perrier."	30/30 30
47:04		Local Insert:	:30
47:34		LOGO: AMERICAN TOP 40, <u>then Charlie I.D.'s himself</u> #2 PARTY ALL THE TIME (A) Eddie Murphy #1 <u>SAY YOU, SAY ME</u> (A) Lionel Richie	10:16
57:18		THEME UP AND UNDER WITH TALK UNIT ENDING AT: 57:50 THEME TO: 57:50	
57:50		C-6 LOCAL INSERT:	2:00
59:50		STATION I. D.:	:10

FORMAT AND COMMERCIAL CLOCK



Hour IV
 Program 861-2
 Sides 4A and 4B
 Chart Date 01/11/86



Local minutes available 7½
 Network minutes used 4½

