



TO: AMERICAN TOP 40 SUBSCRIBERS

DATE: 10/31/83

RE: LOCAL COMMERCIAL AVAILABILITY

IN THIS WEEK'S AMERICAN TOP 40, PROGRAM #834-6, FOR AIR NOVEMBER 5-6, 1983, THERE IS AN ADDITIONAL 7½ MINUTES OF LOCAL COMMERCIAL AVAILABILITY.

THERE ARE THIRTY SECONDS AVAILABLE LOCATED AT C-2 AND C-4 IN ALL HOURS. THERE ARE THIRTY SECONDS AT C-5 IN HOUR THREE AND SIXTY SECONDS AT C-5 IN HOURS ONE, TWO AND FOUR.



3575 Cahuenga Blvd. W., Suite 555, Los Angeles, CA 90068

ABC Contemporary Radio Network

SCHEDULED START TIME	ACTUAL TIME	ELEMENT	RUNNING TIME
14 00:00		OPENING BILLBOARD: (VOICE ONLY) "NOW, AMERICAN TOP 40 IS BROUGHT TO YOU IN PART BY TRIDENT." THEME AND OPENING OF PART I THEME: "SHUCKATOOM THEME FROM AMERICAN TOP 40" (MARKWATER MUSIC/BMI) #40. SPICE OF LIFE (A) Manhattan Transfer #39. JUST GOT LUCKY (B) JoBoxers	07:56
14 07:56	0826	C-1 NETWORK SPOT: Trident/S.C. Johnson Agree (OUT CUE) Jingle ends cold with... "...volume with Agree."	30/30
08:56		LOCAL INSERT:	60
09:56		LOGO: AMERICAN TOP 40, <u>then Casey IDs himself</u> #38. SEXY + 17 (B) Stray Cats #37. WHY ME? (A) Irene Cara	07:44
17:40		C-2 NETWORK SPOT: Dry & Clear (OUT CUE) Voice out cold with... "...use as directd."	30
18:10		LOCAL INSERT:	1:30
19:40		LOGO: AMERICAN TOP 40 #36. MIRROR MAN (A) The Human League <u>OL: MOST ACTS WITH MORE THAN ONE SINGLE ON CHART</u> #35. QUEEN OF THE BROKEN HEARTS (A&B) Loverboy	09:20
4 29:00	4 2930	C-3 NETWORK SPOT: Chewels/Hanes Hosiery (OUT CUE) Jingle ends cold with... "...gentlemen prefer Hanes."	30/30
30:00		LOCAL INSERT:	60
31:00		STATION I. D.:	10



ABC Watermark



FOR WEEK ENDING: 11/5/83
 CYCLE NO. 834 PROGRAM 6 OF 13
 DISC & HALF HOUR NO. 1B PAGE NO. 2

3575 Cahuenga Blvd. W., Suite 555, Los Angeles, CA 90068

ABC Contemporary Radio Network

SCHEDULED START TIME	ACTUAL TIME	ELEMENT	RUNNING TIME
14 31:10		LOGO: AMERICAN TOP 40 STATION MENTIONS #34. AUTOMATIC MAN (A) Michael Sembello #33. DR. HECKYLL & MR. JIVE (A) Men At Work	08:37
14 39:47		C-4 NETWORK SPOT: U.S. Army Reserve (OUT CUE) Voice out cold with... "...paid for by the Army Reserve."	30
40:17		LOCAL INSERT:	1:30
41:47		LOGO: AMERICAN TOP 40 #32. HOW MANY TIMES CAN WE SAY GOODBYE (A) Dionne Warwick and Luther Vandross #31. TENDER IS THE NIGHT (A) Jackson Browne	10:01
14 51:48		C-5 NETWORK SPOT: Gillette Good News/NBC-TV (OUT CUE) Voice out cold with... "...Sunday night on NBC."	30/30
14 52:18		LOCAL INSERT:	60
52:48		LOGO: AMERICAN TOP 40, <u>then Casey IDs himself</u> #30. SEND HER MY LOVE (A) Journey	04:04
53:48		THEME UP AND UNDER WITH TALK UNIT ENDING AT: 57:52 THEME TO: 58:50	
57:41		C-6 LOCAL INSERT:	1:00
58:50		STATION I. D.:	10
59:50			

FORMAT AND COMMERCIAL CLOCK

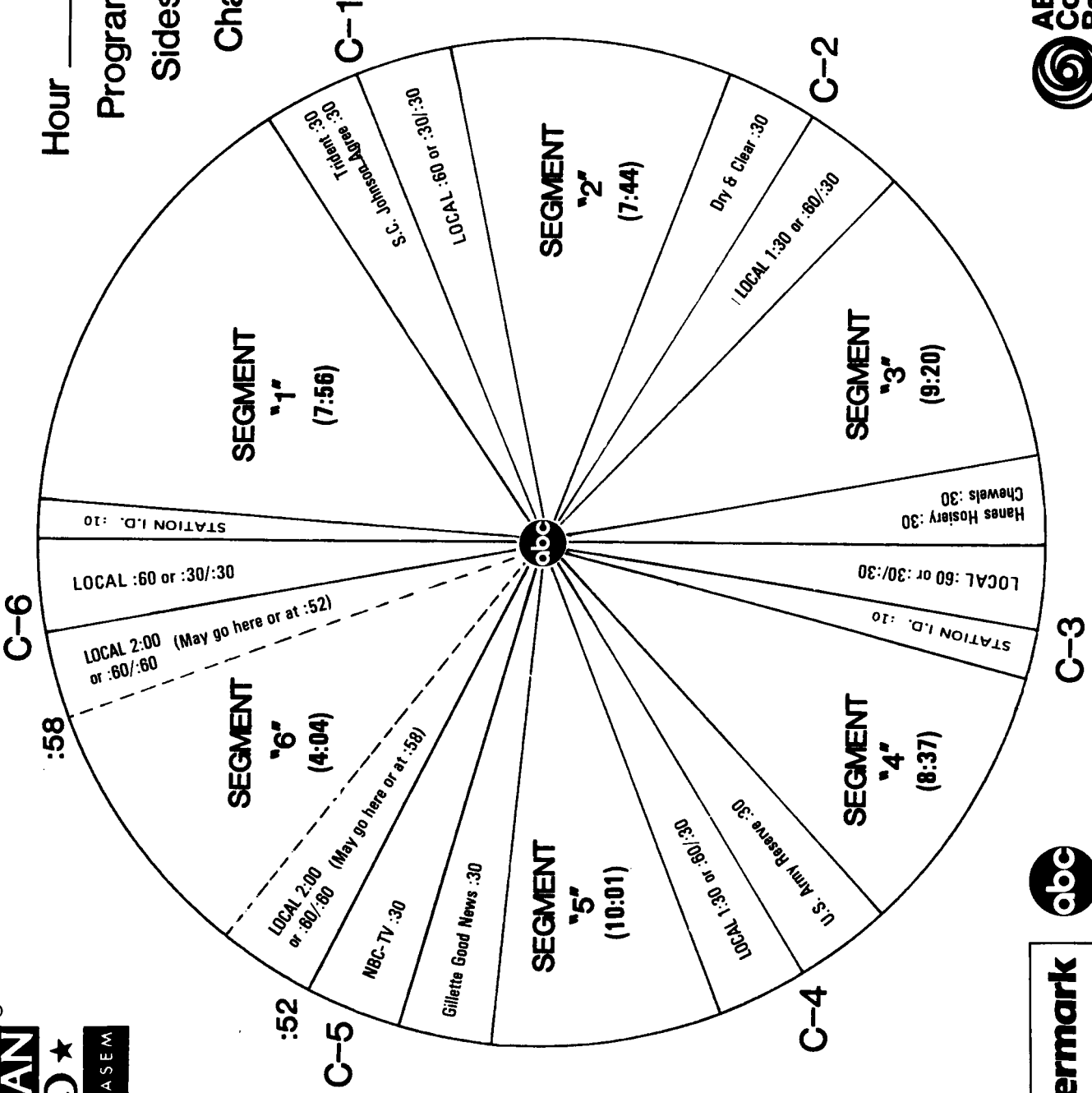
AMERICAN
★ TOP40 ★
 WITH CASEY KASEM

Hour 1

Program #834-6

Sides 1A and 1B

Chart Date 11/5/83



Local minutes available 8

Network minutes used 4



ABC Watermark



ABC Watermark



FOR WEEK ENDING: 11/5/83
 CYCLE NO. 834 PROGRAM 6 OF 13
 DISC & HALF HOUR NO. 2A PAGE NO. 3

3575 Cahuenga Blvd. W., Suite 555, Los Angeles, CA 90068

ABC Contemporary Radio Network

SCHEDULED START TIME	ACTUAL TIME	ELEMENT	RUNNING TIME
5 00:00		THEME AND OPENING OF PART II #29. CAN'T SHAKE LOOSE (A) Agnetha Faltskog #28. FOOLIN' (B) Def Leppard	08:20
15 08:20 15 0850		^{C-1} NETWORK SPOT: Trident/S.C. Johnson Agree (OUT CUE) Jingle ends cold with... "...volume with Agree."	30/30
09:20		LOCAL INSERT:	
10:20		LOGO: AMERICAN TOP 40, <u>then Casey IDs himself</u> #27. TELL HER ABOUT IT (B) Billy Joel <u>LDD: IT'S MY TURN (A)</u> Diana Ross	09:54
5 20:14		^{C-2} NETWORK SPOT: Dry & Clear (OUT CUE) Voice out cold with... "...use as directed."	30
20:44		LOCAL INSERT:	1:30
22:14		LOGO: AMERICAN TOP 40 STATIONS MENTIONS #26. CHURCH OF THE POISON MIND (A) Culture Club #25. THIS TIME (B) Bryan Adams	07:29
5 29:43 5 30/3		^{C-3} NETWORK SPOT: Trident/Hanes Hosiery (OUT CUE) Jingle ends cold with... "...gentlemen prefer Hanes."	30/30
30:43		LOCAL INSERT:	60
31:43		STATION I. D.:	10



3575 Cahuenga Blvd. W., Suite 555, Los Angeles, CA 90068

ABC Contemporary Radio Network

SCHEDULED START TIME	ACTUAL TIME	ELEMENT	RUNNING TIME
15 31:53		LOGO: AMERICAN TOP 40, <u>then Casey IDs himself</u> #24. LOVE IS A STRANGER (B) Eurythmics	04:04
15 35:57		^{C-4} NETWORK SPOT: U.S. Army Reserve (OUT CUE) Voice out cold with... "...paid for by the Army Reserve."	30
36:27		LOCAL INSERT:	1:30
37:57		LOGO: AMERICAN TOP 40 #23. THE SAFETY DANCE (B) Men Without Hats #22. <u>BURNING DOWN THE HOUSE</u> (A) Talking Heads	08:46
15 46:43		^{C-5} NETWORK SPOT: Chewels/Gillette Good News (OUT CUE) Voice out cold with... "...a limited time only."	30/30
5 47:13		LOCAL INSERT:	60
47:43		LOCAL INSERT:	
48:43		LOGO: AMERICAN TOP 40, <u>then Casey IDs himself</u> #21. CRUMBLIN' DOWN (A) John Cougar Mellencamp #20. <u>P.Y.T. (PRETTY YOUNG THING)</u> (A) Michael Jackson	09:03
57:37		THEME UP AND UNDER WITH TALK UNIT ENDING AT: 57:46 THEME TO: 57:50	
57:50		^{C-6} LOCAL INSERT:	2:00
59:50		STATION I. D.:	10

FORMAT AND COMMERCIAL CLOCK



Hour 2

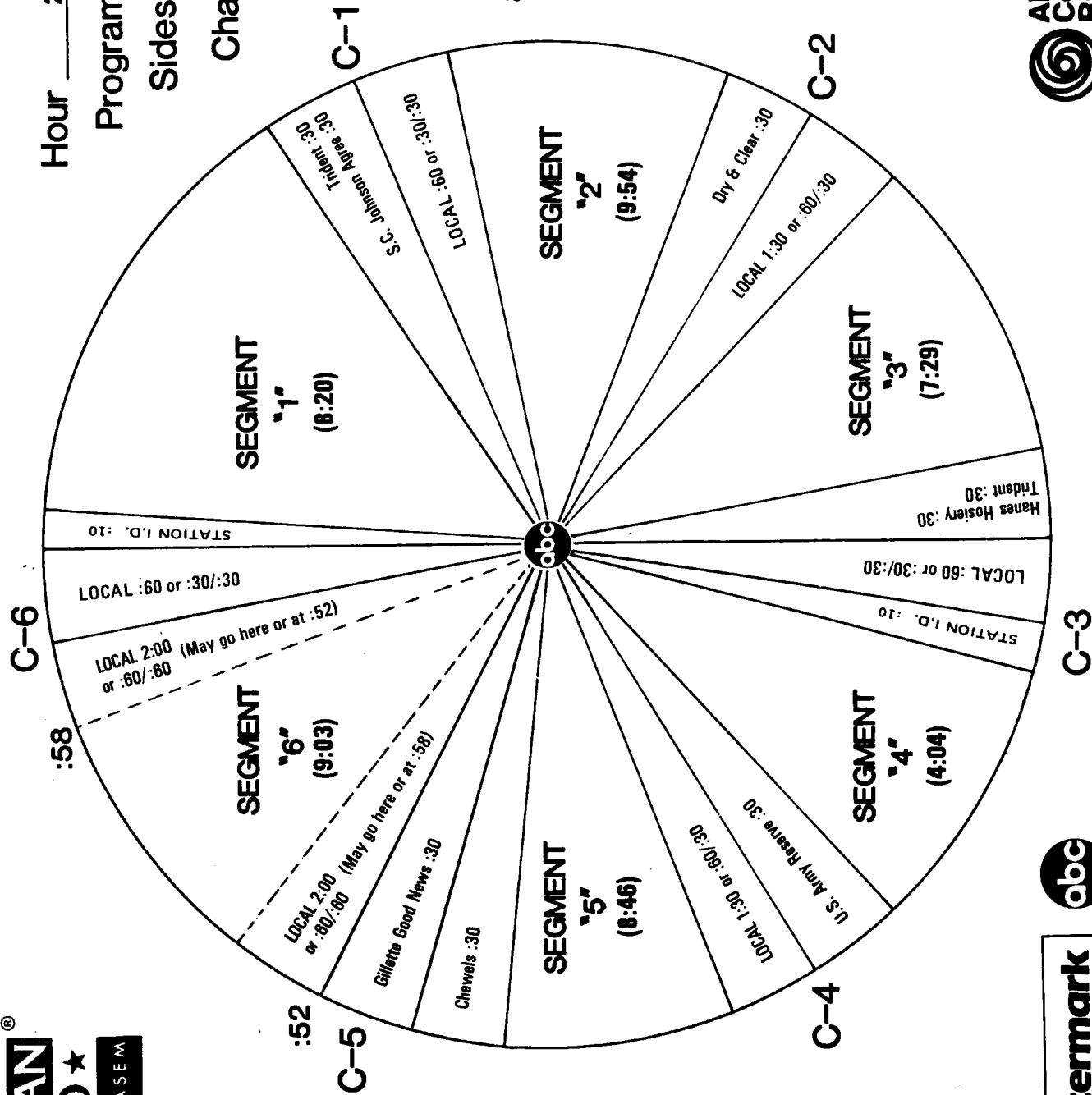
Program #834-6

Sides 2A and 2B

Chart Date 11/5/83

Local minutes available 8

Network minutes used 4





3575 Cahuenga Blvd. W., Suite 555, Los Angeles, CA 90068

ABC Contemporary Radio Network

SCHEDULED START TIME	ACTUAL TIME	ELEMENT	RUNNING TIME
6 00:00		THEME AND OPENING OF PART III #19. SAY IT ISN'T SO (B) Daryl Hall & John Oates STATION MENTIONS #18. HEART AND SOUL (B) Huey Lewis & the News	08:11
6 08:11 16 0841		NETWORK SPOT: Trident/S.C. Johnson ^{C-1} (OUT CUE) Jingle ends cold with.... "...the volume with Agree."	30/30
09:11		LOCAL INSERT:	60
10:11		LOGO: AMERICAN TOP 40 #17. LOVE IS A BATTLEFIELD (A&B) Pat Benatar	04:46
14:57		NETWORK SPOT: Dry & Clear ^{C-2} (OUT CUE) Voice out cold with... "...use as directed."	30
15:27		LOCAL INSERT:	1:30
16:57		LOGO: AMERICAN TOP 40, <u>then Casey IDs himself</u> #16. TONIGHT I CELEBRATE MY LOVE (A&B) Peabo Bryson/Roberta Flack <u>TX: THE WRECK OF THE EDMUND FITZGERALD (CAPAC)</u> Gordon Lightfoot	11:53
6 28:50 6 2920		NETWORK SPOT: Chewels/ Hanes Hosiery ^{C-3} (OUT CUE) Jingle ends cold with... "...gentlemen prefer Hanes."	30/30
29:50		LOCAL INSERT:	60
30:50		STATION I. D.:	10



ABC Watermark



FOR WEEK ENDING: 11/5/83
 CYCLE NO. 834 PROGRAM 6 OF 13
 DISC & HALF HOUR NO. 3B PAGE NO. 6

3575 Cahuenga Blvd. W., Suite 555, Los Angeles, CA 90068

ABC Contemporary Radio Network

SCHEDULED START TIME	ACTUAL TIME	ELEMENT	RUNNING TIME
14 31:00		LOGO: AMERICAN TOP 40 #15. MODERN LOVE (A) David Bowie #14. IF ANYONE FALLS (A&B) Stevie Nicks	08:38
39:38		C-4 NETWORK SPOT: U.S. Army Reserve (OUT CUE) Voice out cold with... "...by the Army Reserve."	30
40:08		LOCAL INSERT:	1:30
41:38		LOGO: AMERICAN TOP 40, <u>then Casey IDs himself</u> #13. KING OF PAIN (B) The Police	05:26
47:04		C-5 NETWORK SPOT: TSR Hobbies/NBC-TV (OUT CUE) Voice out cold with... "...Sunday night on NBC."	60/30
48:04		LOCAL INSERT:	30
49:04		LOGO: AMERICAN TOP 40 #12. CUM ON FEEL THE NOIZE (A) Quiet Riot #11. <u>SUDDENLY LAST SUMMER</u> (B) The Motels	08:23
57:27		THEME UP AND UNDER WITH TALK UNIT ENDING AT: 57:37 THEME TO: 57:50	
57:50		C-6 LOCAL INSERT:	2:00
59:50		STATION I. D.:	10

FORMAT AND COMMERCIAL CLOCK

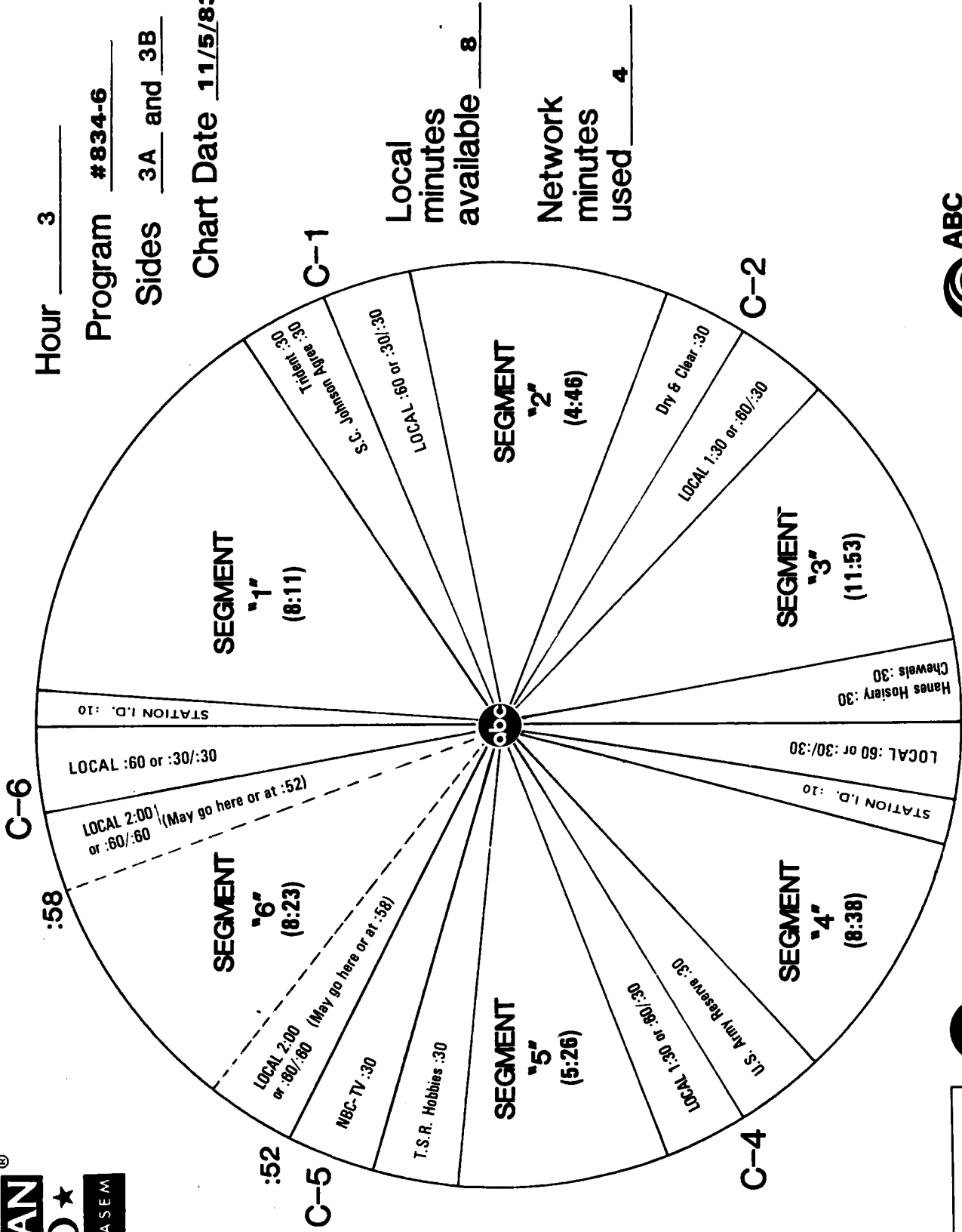
AMERICAN
★ **TOP40** ★
WITH CASEY KASEM

Hour 3

Program #834-6

Sides 3A and 3B

Chart Date 11/5/83



ABC Watermark



3575 Cahuenga Blvd. W., Suite 555, Los Angeles, CA 90068

ABC Contemporary Radio Network

SCHEDULED START TIME	ACTUAL TIME	ELEMENT	RUNNING TIME
17 00:00		THEME AND OPENING OF PART IV #10. TRUE (A) Spandau Ballet	03:58
17 03:58 17 04:28		^{C-1} NETWORK SPOT: Trident/S.C. Johnson Agree (OUT CUE) Jingle ends cold with... "...volume with Agree."	30/30
04:58		LOCAL INSERT:	60
05:58		LOGO: AMERICAN TOP 40 #9. TELEFONE (LONG DISTANCE LOVE AFFAIR) (B) Sheena Easton #8. DELIRIOUS (A) Prince	06:12
12:10		^{C-2} NETWORK SPOT: Dry & Clear (OUT CUE) Voice out cold with... "...use as directed."	30
12:40		LOCAL INSERT:	1:30
14:10		LOGO: AMERICAN TOP 40 STATION MENTIONS #7. MAKING LOVE OUT OF NOTHING AT ALL (B) Air Supply LDD: UP WHERE WE BELONG (A&B) Joe Cocker and Jennifer Warnes	10:13
17 24:23 17 24:53		^{C-3} NETWORK SPOT: Trident/Hanes Hosiery (OUT CUE) Jingle ends cold with... "...gentlemen prefer Hanes."	30/30
25:23		LOCAL INSERT:	60
26:23		STATION I. D.:	10



3575 Cahuenga Blvd. W., Suite 555, Los Angeles, CA 90068

ABC Contemporary Radio Network

SCHEDULED START TIME	ACTUAL TIME	ELEMENT	RUNNING TIME
26:33		LOGO: AMERICAN TOP 40 #6. SAY SAY SAY (A) Paul McCartney and Michael Jackson #5. UPTOWN GIRL (B) Billy Joel	08:24
34:57		C-4 NETWORK SPOT: U.S. Army Reserve (OUT CUE) Voice out cold with... "...paid for by the Army Reserve."	30
35:27		LOCAL INSERT:	1:30
36:57		LOGO: AMERICAN TOP 40 #4. ONE THING LEADS TO ANOTHER (A) The Fixx #3. TOTAL ECLIPSE OF THE HEART (B) Bonnie Tyler	09:21
46:18	7:46:48	C-5 NETWORK SPOT: Chewels/Gillette Good News (OUT CUE) Voice out cold with... "...for a limited time only."	30/30
47:18		LOCAL INSERT:	60
48:18		LOGO: AMERICAN TOP 40 #2. ALL NIGHT LONG (ALL NIGHT) (A) Lionel Richie #1. ISLANDS IN THE STREAM (B) Kenny Rogers with Dolly Parton	08:56
57:14		CLOSING BILLBOARD: "AMERICAN TOP 40 HAS BEEN BROUGHT TO YOU BY TRIDENT." THEME UP AND UNDER WITH TALK UNIT ENDING AT: 57:52 THEME TO: 58:50	
58:50		C-6 LOCAL INSERT:	1:00
59:50		STATION I. D.:	10

FORMAT AND COMMERCIAL CLOCK

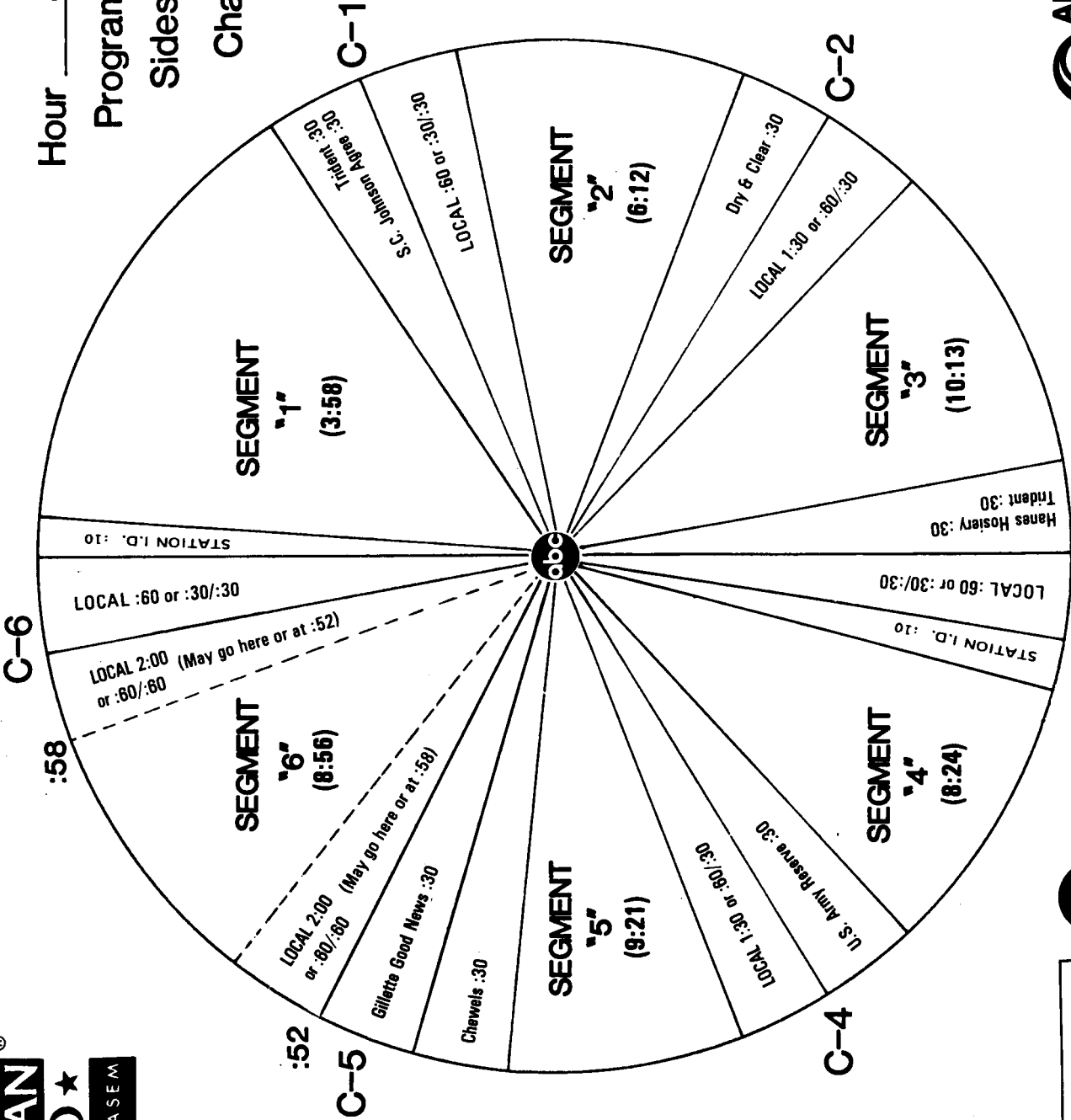
AMERICAN
★ TOP40 ★
 WITH CASEY KASEM

Hour 4
 Program #834-6
 Sides 4A and 4B

Chart Date 11/5/83

Local minutes available 8

Network minutes used 4



ABC Watermark