

**AMERICAN**  
**★ TOP40 ★**  
**WITH CASEY KASEM**

TO: AMERICAN TOP 40 SUBSCRIBERS  
FROM: ABC WATERMARK  
DATE: 11/05/84  
RE: GUEST HOST

IN THIS WEEK'S AMERICAN TOP 40, PROGRAM #844-6, FOR AIR  
NOVEMBER 10-11, 1984, CHARLIE VAN DYKE WILL BE SITTING IN  
FOR CASEY KASEM. CASEY WILL RETURN NEXT WEEK FOR SHOW  
#844-7.



TO: AMERICAN TOP 40

FROM: ABC WATERMARK

DATE: 11/05/84

RE: LOCAL COMMERCIAL AVAILABILITY

IN THIS WEEK'S AMERICAN TOP 40, PROGRAM #844-6, FOR AIR NOVEMBER 10-11, 1984, THERE IS AN ADDITIONAL FIVE MINUTES OF LOCAL COMMERCIAL AVAILABILITY

THERE ARE THIRTY SECONDS LOCATED AT C-1 IN HOURS 1, 2, AND 3 AND THIRTY SECONDS LOCATED AT C-3 IN HOURS 1, 3, AND 4. AND THIRTY SECONDS AT C-5 IN ALL HOURS.



**ABC Watermark**



FOR WEEK ENDING: 11/10/84  
 CYCLE NO. 844 PROGRAM 6 OF 13  
 DISC & HALF HOUR NO. 1A PAGE NO. 1

3575 Cahuenga Blvd. W., Suite 555, Los Angeles, CA 90068

**ABC Contemporary Radio Network**

SCHEDULED START TIME	ACTUAL TIME	ELEMENT	RUNNING TIME
00:00		THEME AND OPENING OF PART I THEME: "THEME FROM AMERICAN TOP 40" (MARKWATER)  #40 TEARS (B) John Waite  #39 COVER ME (A) Bruce Springsteen	08:30
08:30		<b>C-1</b> <b>NETWORK SPOT:</b> ABC-TV (OUT CUE) Jingle ends cold with... "...on ABC."	:30
09:00		<b>LOCAL INSERT:</b>	1:30
10:30		LOGO: AMERICAN TOP 40 , <u>then Charlie Van Dyke I.D.'s himself</u>  #38 HELLO AGAIN ( ) The Cars	04:24
14:54		<b>C-2</b> <b>NETWORK SPOT:</b> Dry & Clear/Mediquell (OUT CUE) Voice out cold with... "...use as directed."	30/30
15:54		<b>LOCAL INSERT:</b>	:60
16:54		LOGO: AMERICAN TOP 40 , <u>then Charlie Van Dyke I.D.'s himself</u> #37 WE ARE THE YOUNG (B) Dan Hartman  QL: <u>TOP 40 HITS IN FOUR DECADES</u>  #36 SUGAR DON'T BITE (B) Sam Harris	09:01
25:55		<b>C-3</b> <b>NETWORK SPOT:</b> Lee Jeans (OUT CUE) Voice out cold with... "...brand that fits."	:30
26:25		<b>LOCAL INSERT:</b>	1:30
27:55		<b>STATION I. D.:</b>	:10



**ABC Watermark**



FOR WEEK ENDING: 11/10/84  
 CYCLE NO. 844 PROGRAM 6 OF 13  
 DISC & HALF HOUR NO. 1B  
 PAGE NO. 2

3575 Cahuenga Blvd. W., Suite 555, Los Angeles, CA 90068

**ABC Contemporary Radio Network**

SCHEDULED START TIME	ACTUAL TIME	ELEMENT	RUNNING TIME
28:05		LOGO: AMERICAN TOP 40  STATION MENTIONS  #35 GIRLS WITH GUNS (A) Tommy Shaw	03:33
31:38		<b>C-4</b> <b>NETWORK SPOT:</b> Pittsburgh Public Broadcasting/Bubble Yum (OUT CUE) Voice out cold with... "...not the fun."	30/30
32:38		<b>LOCAL INSERT:</b>	:60
33:38		LOGO: AMERICAN TOP 40 , <u>then Charlie Van Dyke I.D.'s himself</u>  #34 DRIVE (A) The Cars  #33 <u>VALOTTE</u> (A) Julian Lennon  #32 LET'S GO CRAZY (A) Prince and the Revolution	13:54
47:32		<b>C-5</b> <b>NETWORK SPOT:</b> Mediquell/Warner Bros./Lifesavers (OUT CUE) Voice out cold with... "...bet your Lifesavers."	30/30/30
49:02		Local Insert:	:30
49:32		LOGO: AMERICAN TOP 40 , <u>then Charlie Van Dyke I.D.'s himself</u>  #31 WE BELONG (B) Pat Benatar  #30 I CAN'T DRIVE 55 (A) Sammy Hagar	08:08
57:28		THEME UP AND UNDER WITH TALK UNIT ENDING AT: 57:40 THEME TO: 57:50	
57:50		<b>LOCAL INSERT:</b>	2:00
59:50		<b>STATION I. D.:</b>	:10

# FORMAT AND COMMERCIAL CLOCK

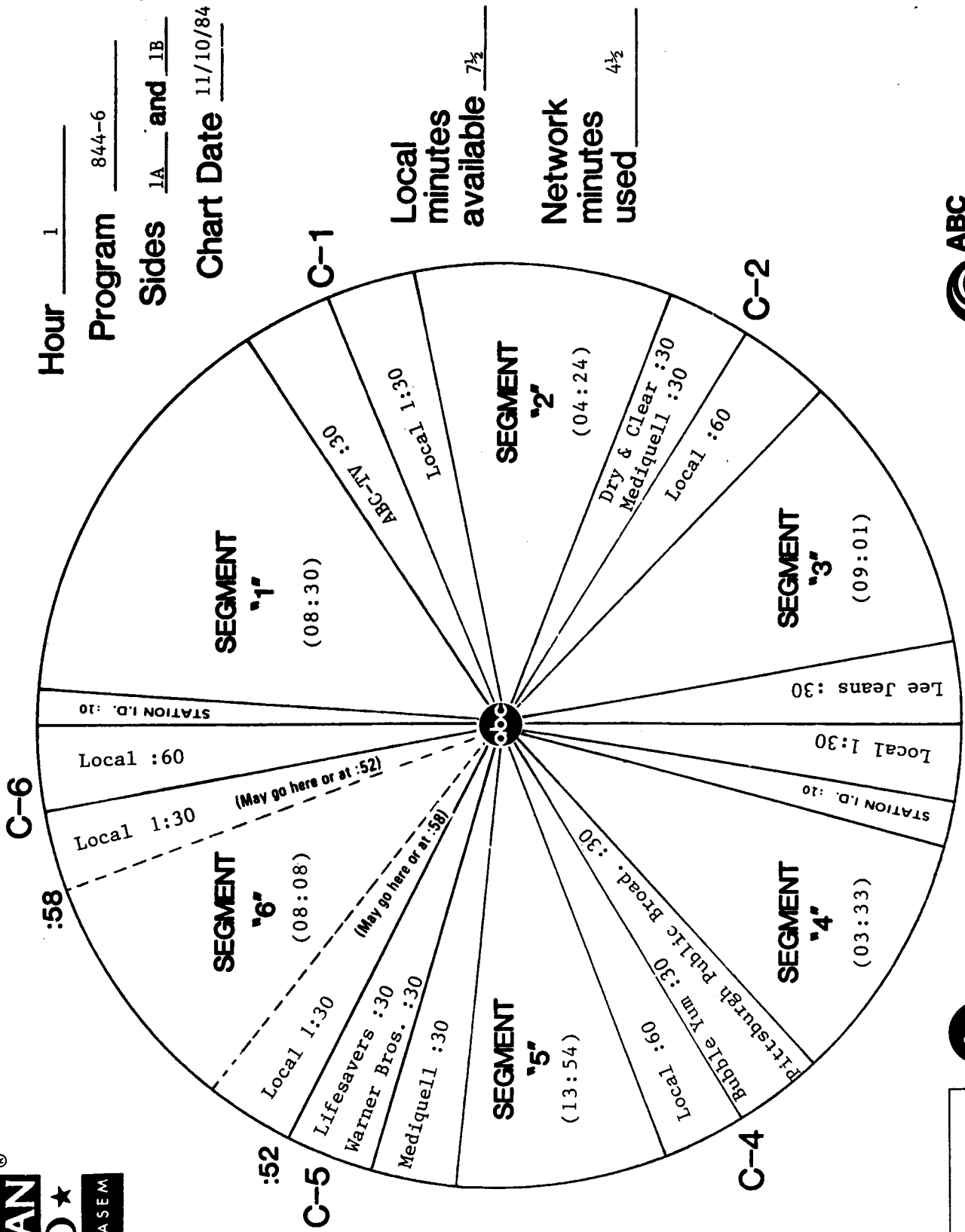
**AMERICAN**  
**★ TOP40 ★**  
 WITH CASEY KASEM

Hour 1

Program 844-6

Sides 1A and 1B

Chart Date 11/10/84



Local minutes available 7½

Network minutes used 4½

**ABC Watermark**



**ABC Contemporary Radio Network**



**ABC Watermark**



FOR WEEK ENDING: 11/10/84  
 CYCLE NO. 844 PROGRAM 6 OF 13  
 DISC & HALF HOUR NO. 2A PAGE NO. 3

3575 Cahuenga Blvd. W., Suite 555, Los Angeles, CA 90068

**ABC Contemporary Radio Network**

SCHEDULED START TIME	ACTUAL TIME	ELEMENT	RUNNING TIME
00:00		THEME AND OPENING OF PART II  #29 TEACHER, TEACHER (B) .38 Special  #28 THE WILD BOYS ( ) Duran Duran	07:33
07:33		<b>C-1</b> <b>NETWORK SPOT:</b> Bubble Yum (OUT CUE) Voice out cold with... "...not the fun."	:30
08:03		<b>LOCAL INSERT:</b>	1:30
09:33		LOGO: AMERICAN TOP 40 , <u>then Charlie Van Dyke I.D.'s himself</u>  #27 WALKING ON A THIN LINE (A&B) Huey Lewis and the News  <u>LDD: THE LAST FAREWELL ( )</u> Roger Whittaker	09:28
18:59		<b>C-2</b> <b>NETWORK SPOT:</b> ABC-TV/Mediquell (OUT CUE) Voice out cold with... "...use as directed."	30/30
19:59		<b>LOCAL INSERT:</b>	:60
20:59		LOGO: AMERICAN TOP 40 , <u>then Charlie Van Dyke I.D.'s himself</u>  #26 IT AIN'T ENOUGH (A) Corey Hart  #25 SEA OF LOVE (B) The Honey Drippers	06:42
27:41		<b>C-3</b> <b>NETWORK SPOT:</b> Oxy Line (OUT CUE) Voice out cold with... "...in the sky."	:60
28:41		<b>LOCAL INSERT:</b>	:60
29:41		<b>STATION I. D.:</b>	:10



3575 Cahuenga Blvd. W., Suite 555, Los Angeles, CA 90068

ABC Contemporary Radio Network

SCHEDULED START TIME	ACTUAL TIME	ELEMENT	RUNNING TIME
29:51		LOGO: AMERICAN TOP 40 , <u>then Charlie Van Dyke I.D.'s himself</u>  #24 I CAN'T HOLD BACK (A&B) Survivor  #23 <u>SWEPT AWAY</u> (B) Diana Ross	09:41
39:32		<b>C-4</b> <b>NETWORK SPOT:</b> Pittsburgh Public Broadcasting/Lee Jeans (OUT CUE) Voice out cold with... "...brand that fits."	30/30
40:32		<b>LOCAL INSERT:</b>	:60
41:32		LOGO: AMERICAN TOP 40  STATION MENTIONS  #22 COOL IT NOW (A) New Edition	04:38
46:10		<b>C-5</b> <b>NETWORK SPOT:</b> Warner Bros./Carefree/Sure & Natural (OUT CUE) Voice out cold with... "...the tightest clothes."	30/30/30
47:40		Local Insert:	:30
48:10		LOGO: AMERICAN TOP 40 , <u>then Charlie Van Dyke I.D.'s himself</u>  #21 WHO WEARS THESE SHOES? (A) Elton John  #20 <u>THE WAR SONG</u> (A) Culture Club	09:32
57:31		THEME UP AND UNDER WITH TALK UNIT ENDING AT: 57:42 THEME TO: 57:50	
57:50		<b>C-6</b>  <b>LOCAL INSERT:</b>	2:00
59:50		<b>STATION I. D.:</b>	:10

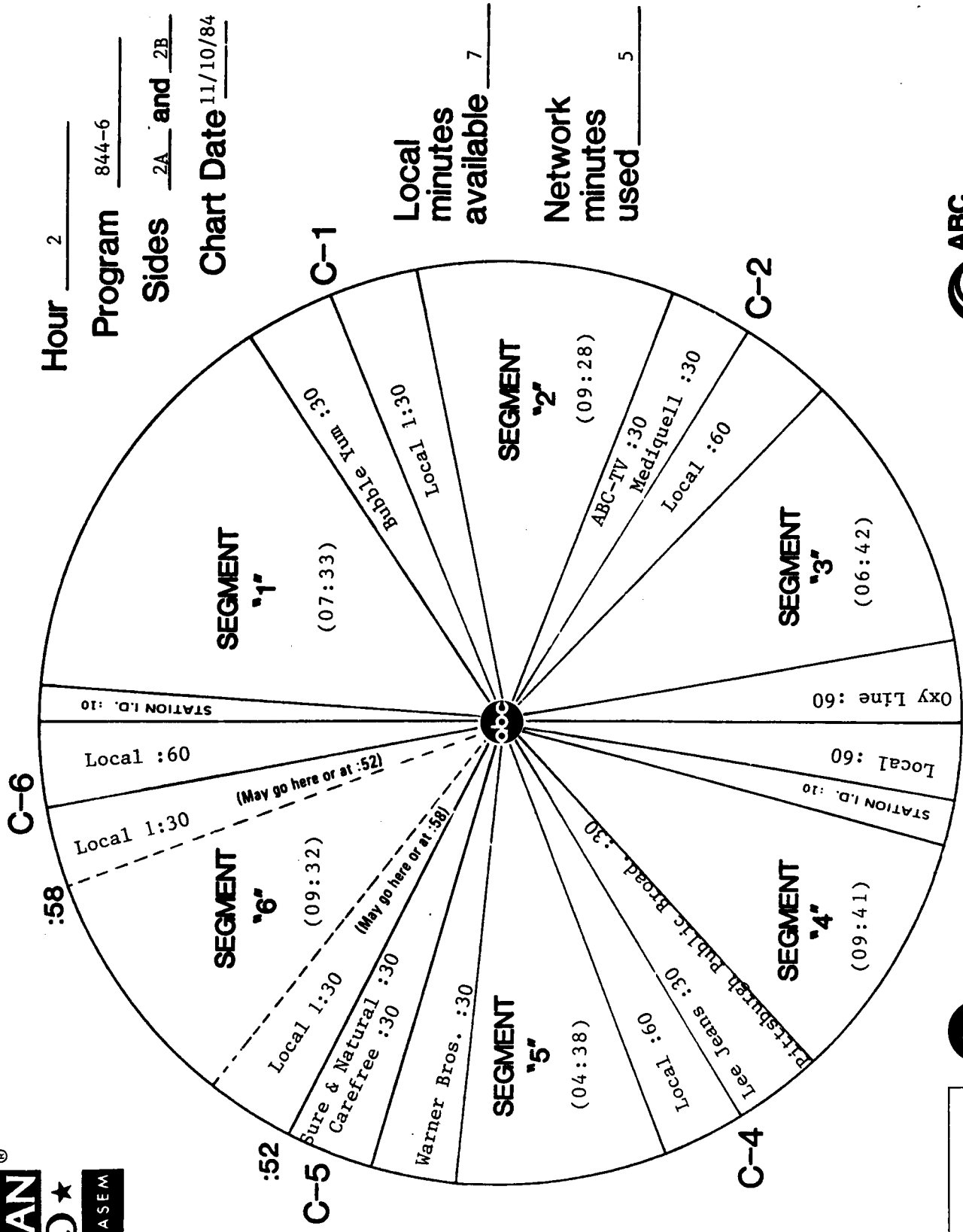
# FORMAT AND COMMERCIAL CLOCK



Hour 2  
 Program 844-6

Sides 2A and 2B

Chart Date 11/10/84



Local minutes available 7

Network minutes used 5



ABC Watermark





**ABC Watermark**



FOR WEEK ENDING: 11/10/84  
 CYCLE NO. 844 PROGRAM 6 OF 13  
 DISC & HALF HOUR NO. 3A PAGE NO. 5

3575 Cahuenga Blvd. W., Suite 555, Los Angeles, CA 90068

**ABC Contemporary Radio Network**

SCHEDULED START TIME	ACTUAL TIME	ELEMENT	RUNNING TIME
00:00		THEME AND OPENING OF PART III  #19 NO MORE LONELY NIGHTS (A) Paul McCartney  #18 WHAT ABOUT ME? (A&B) Kenny Rogers with Kim Carnes & James Ingram	09:35
09:35		<b>C-1</b> <b>NETWORK SPOT:</b> Lee Jeans (OUT CUE) Voice out cold with... "...brand that fits."	:30
10:05		<b>LOCAL INSERT:</b>	1:30
11:35		LOGO: AMERICAN TOP 40 , <u>then Charlie Van Dyke I.D.'s himself</u>  #17 LUCKY STAR (A) Madonna  #16 SOME GUYS HAVE ALL THE LUCK (A) Rod Stewart	09:39
21:14		<b>C-2</b> <b>NETWORK SPOT:</b> Pittsburgh Public Broadcasting/Lifesavers (OUT CUE) Voice out cold with... "...bet your Lifesavers."	30/30
22:14		<b>LOCAL INSERT:</b>	:60
23:14		LOGO: AMERICAN TOP 40  STATION MENTIONS  #15 I'M SO EXCITED (B) The Pointer Sisters	04:22
27:36		<b>C-3</b> <b>NETWORK SPOT:</b> Dry & Clear (OUT CUE) Voice out cold with... "...specially marked packages."	:30
28:06		<b>LOCAL INSERT:</b>	1:30
29:36		<b>STATION I. D.:</b>	:10



3575 Cahuenga Blvd. W., Suite 555, Los Angeles, CA 90068

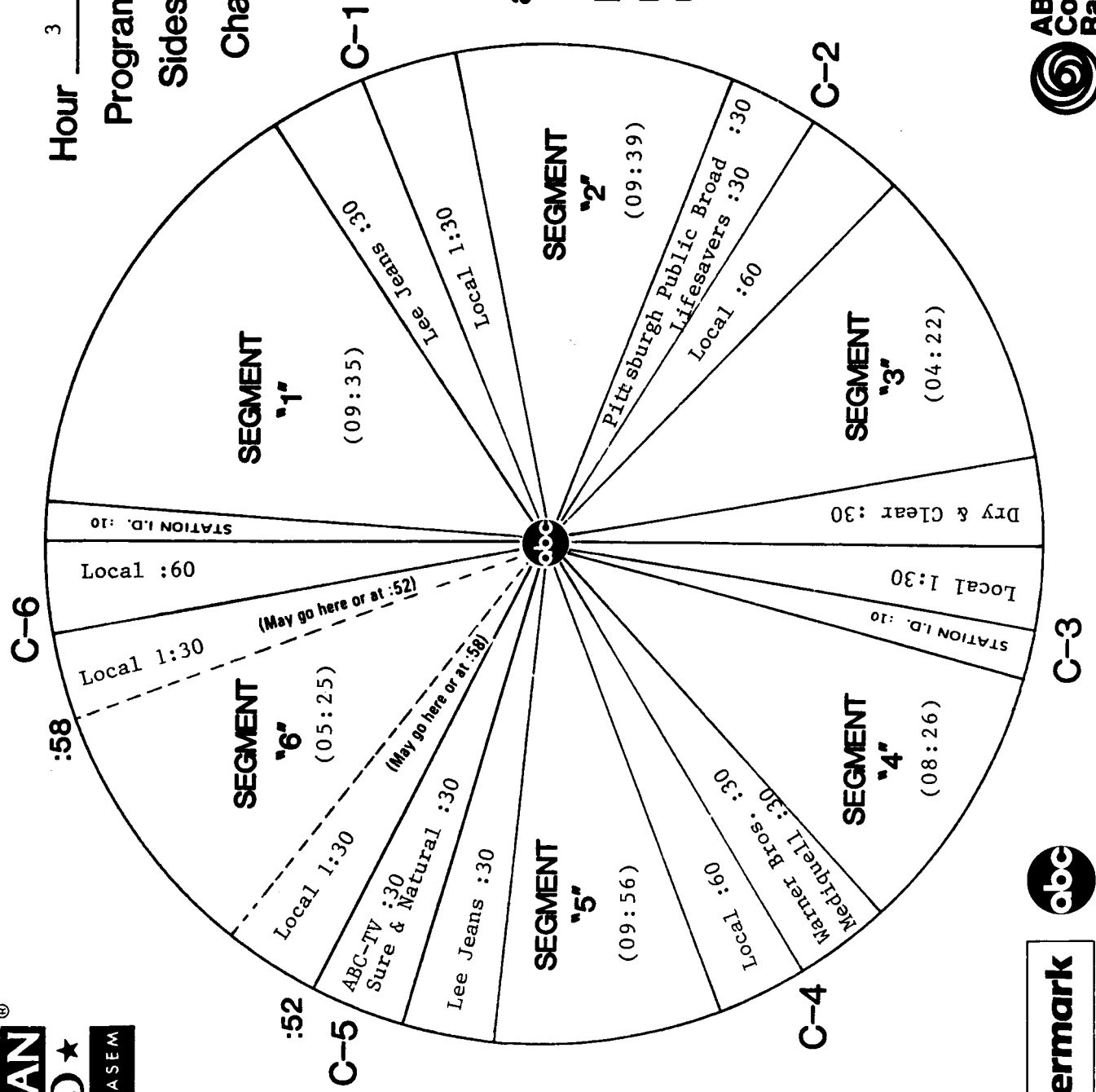
ABC Contemporary Radio Network

SCHEDULED START TIME	ACTUAL TIME	ELEMENT	RUNNING TIME
29:46		LOGO: AMERICAN TOP 40 , <u>then Charlie Van Dyke I.D.'s himself</u>  #14 ON THE DARK SIDE (B) John Cafferty and the Beaver Brown Band  <u>QL: GROUP WITH MOST #2's WITHOUT HITTING NUMBER ONE</u>  #13 PENNY LOVER (A) Lionel Richie	08:26
38:12		<b>C-4</b> <b>NETWORK SPOT:</b> Mediquell/Warner Bros. (OUT CUE) Voice out cold with... "...now playing."	30/30
39:12		<b>LOCAL INSERT:</b>	:60
40:12		LOGO: AMERICAN TOP 40 , <u>then Charlie Van Dyke I.D.'s himself</u>  #12 ALL THROUGH THE NIGHT (B) Cindy Lauper  #11 <u>STRUT</u> (A) Sheena Easton	09:56
50:08		<b>C-5</b> <b>NETWORK SPOT:</b> Lee Jeans/Sure & Natural/ABC-TV (OUT CUE) Jingle ends cold with... "...on ABC."	30/30/30
51:38		<b>Local Insert:</b>	:30
52:08		LOGO: AMERICAN TOP 40 , <u>then Charlie Van Dyke I.D.'s himself</u>  #10 DESERT MOON (A) Dennis DeYoung	05:25
57:21		<b>THEME UP AND UNDER WITH TALK UNIT ENDING AT: 57:33</b> <b>THEME TO: 57:50</b>	
57:50		<b>LOCAL INSERT:</b>	2:00
59:50		<b>STATION I. D.:</b>	:10

# FORMAT AND COMMERCIAL CLOCK

**AMERICAN**  
**★ TOP40 ★**  
 WITH CASEY KASEM

Hour 3  
 Program 844-6  
 Sides 3A and 3B  
 Chart Date 11/10/84



Local minutes available 7½  
 Network minutes used 4½



**ABC Watermark**



3575 Cahuenga Blvd. W., Suite 555, Los Angeles, CA 90068

ABC Contemporary Radio Network

SCHEDULED START TIME	ACTUAL TIME	ELEMENT	RUNNING TIME
00:00		THEME AND OPENING OF PART IV  STATION WELCOMES  #9 HARD HABIT TO BREAK (A&B) Chicago	05:11
05:11		<b>C-1</b> <b>NETWORK SPOT:</b> Oxy Line (OUT CUE) Voice out cold with... "...in the sky."	:60
06:11		<b>LOCAL INSERT:</b>	:60
07:11		LOGO: AMERICAN TOP 40, <u>then Charlie Van Dyke I.D.'s himself</u>  #8 BLUE JEAN (A) David Bowie  <u>LDD:</u> THREE TIMES A LADY (A) The Commodores	09:06
16:17		<b>C-2</b> <b>NETWORK SPOT:</b> Lee Jeans/Warner Bros. (OUT CUE) Voice out cold with... "...near you."	30/30
17:17		<b>LOCAL INSERT:</b>	:60
18:17		LOGO: AMERICAN TOP 40  STATION MENTIONS  #7 BETTER BE GOOD TO ME (A&B) Tina Turner  #6 OUT OF TOUCH (B) Daryl Hall & John Oates	09:21
27:38		<b>C-3</b> <b>NETWORK SPOT:</b> ABC-TV (OUT CUE) Jingle fades after... "...on ABC."	:30
28:08		<b>LOCAL INSERT:</b>	1:30
29:38		<b>STATION I. D.:</b>	:10



3575 Cahuenga Blvd. W., Suite 555, Los Angeles, CA 90068

ABC Contemporary Radio Network

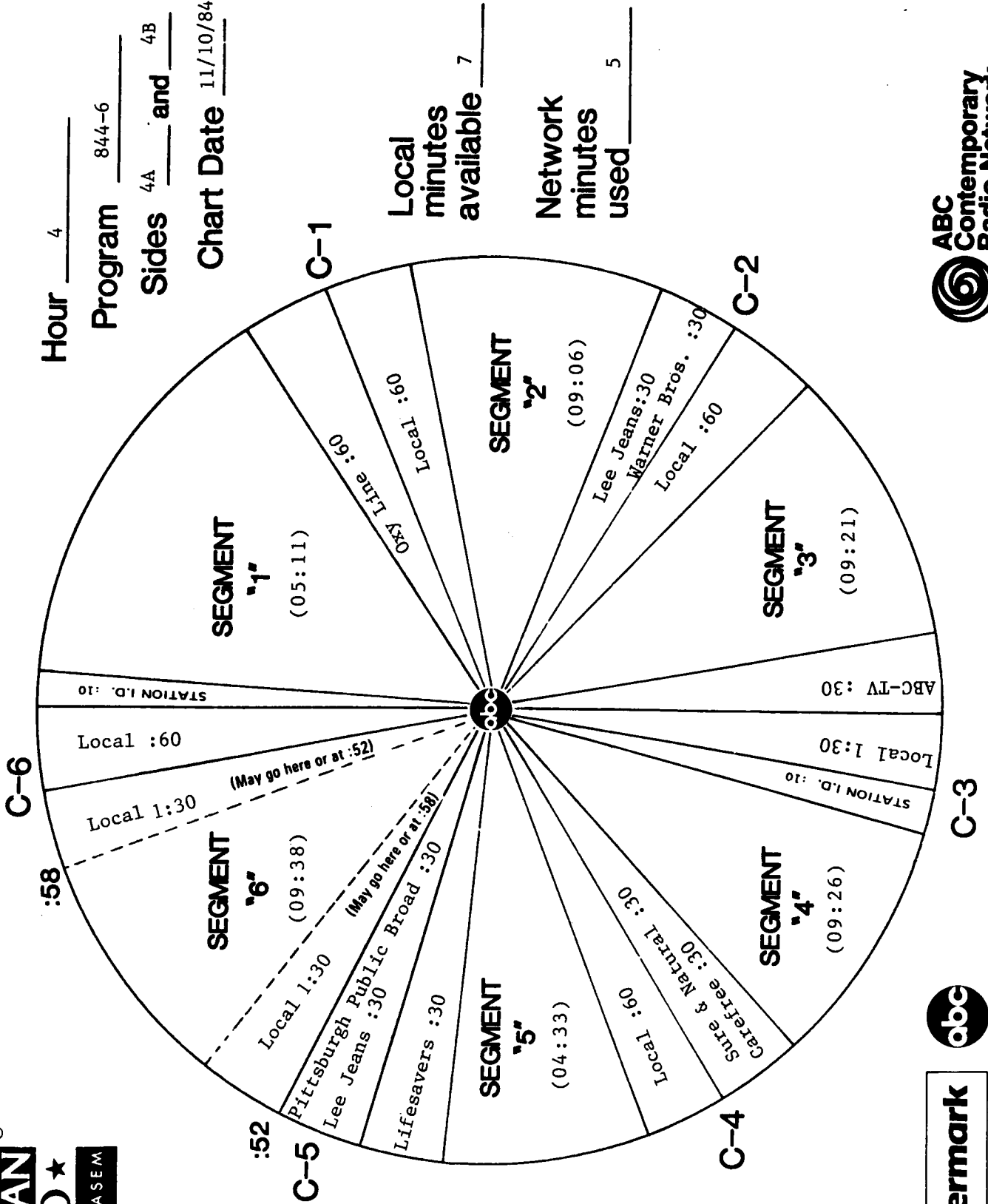
SCHEDULED START TIME	ACTUAL TIME	ELEMENT	RUNNING TIME
29:48		LOGO: AMERICAN TOP 40 , <u>then Charlie Van Dyke I.D.'s himself</u>  #5 I FEEL FOR YOU (A) Chaka Khan  #4 <u>WAKE ME UP BEFORE YOU GO-GO (A)</u> Wham!	09:26
39:14		<b>C-4</b> <b>NETWORK SPOT:</b> Carefree/Sure & Natural (OUT CUE) Jingle ends cold with... "...the tightest clothes."	30/30
40:14		<b>LOCAL INSERT:</b>	:60
41:14		LOGO: AMERICAN TOP 40 , <u>then Charlie Van Dyke I.D.'s himself</u>  #3 PURPLE RAIN (A) Prince and the Revolution	04:33
45:47		<b>C-5</b> <b>NETWORK SPOT:</b> Lifesavers/Lee Jeans/Pittsburgh Public Broadcasting (OUT CUE) Jingle ends cold with... "...by Merrill Dow."	30/30/30
47:17		Local Insert:	:30
47:47		LOGO: AMERICAN TOP 40 , <u>then Charlie Van Dyke I.D.'s himself</u>  #2 I JUST CALLED TO SAY I LOVE YOU (A) Stevie Wonder  #1 CARIBBEAN QUEEN (NO MORE LOVE ON THE RUN) ( ) Billy Ocean	09:38
56:49		THEME UP AND UNDER WITH TALK UNIT ENDING AT: 57:25 THEME TO: 57:50	
		<b>C-6</b>  <b>LOCAL INSERT:</b>  <b>STATION I. D.:</b>	2:00  :10

# FORMAT AND COMMERCIAL CLOCK

**AMERICAN**  
**★ TOP40 ★**  
 WITH CASEY KASEM

Hour 4  
 Program 844-6  
 Sides <sup>4A</sup>      and <sup>4B</sup>       
 Chart Date 11/10/84

Local minutes available 7  
 Network minutes used 5



**ABC Watermark**