



TO: AMERICAN TOP 40 SUBSCRIBERS
FROM: ABC WATERMARK
DATE: NOVEMBER 10, 1985
RE: LOCAL COMMERCIAL AVAILABILITY

IN THIS WEEK'S AMERICAN TOP 40 PROGRAM #854-7,
FOR AIR NOVEMBER 16-17, 1985, THERE IS AN ADDITIONAL
FOUR AND A HALF MINUTES OF LOCAL COMMERCIAL AVAILABILITY.

THERE ARE THIRTY SECONDS IN HOUR I AT C-1, C-3. THIRTY SECONDS
IN HOUR II AT C-1, C-3, AND C-5. THIRTY SECONDS IN HOURS III & IV
AT C-3 AND C-5.



3575 Cahuenga Blvd. W., Suite 555, Los Angeles, CA 90068

ABC Contemporary Radio Network

SCHEDULED START TIME	ACTUAL TIME	ELEMENT	RUNNING TIME
00:00		✓ THEME AND OPENING OF PART I ✓ THEME: "THEME FROM AMERICAN TOP 40" (MARKWATER MUSIC/BMI) ✓ #40 WALK OF LIFE (A) Dire Straits ✓ #39 LONELY OL' NIGHT (A) John Cougar Mellencamp	08:40
08:40		✓ NETWORK SPOT: County Line Cheese C-1 (OUT CUE) Jingle ends cold with... "...we're Beatrice."	:30
09:10		✓ LOCAL INSERT: <i>Hois Cafe Boutique - Kane Retail</i>	1:30
10:40		✓ LOGO: AMERICAN TOP 40, <u>then Casey I.D.'s himself</u> <i>muchant</i> ✓ #38 TONIGHT SHE COMES (A) The Cars	03:45
14:25		✓ NETWORK SPOT: Halls/MEM English Leather C-2 (OUT CUE) Jingle fades after... "...talk about football."	30/30
15:25		✓ LOCAL INSERT: <i>Shady Point - dining Furniture</i>	:60
16:25		✓ LOGO: AMERICAN TOP 40 ✓ #37 OBJECT OF MY DESIRE (B) Starpoint ✓ #36 SMALL TOWN (A) John Cougar Mellencamp ***** * TOPICAL * * PROMOS AT * * THE END OF * * 1A * *****	09:46
26:11		✓ NETWORK SPOT: Pontiac C-3 (OUT CUE) Jingle fades after... "...Pontiac, you've got to."	:30
26:41		✓ LOCAL INSERT:	1:30
28:11		STATION I. D.: <i>PSA OVER FOR SIDE C/B weather forecast.</i>	:10



ABC Watermark



FOR WEEK ENDING: 11/16/85
CYCLE NO. 854 PROGRAM 7 OF 13
DISC & HALF HOUR NO. 1B
PAGE NO. 2

3575 Cahuenga Blvd. W., Suite 555, Los Angeles, CA 90068

ABC Contemporary Radio Network

SCHEDULED START TIME	ACTUAL TIME	ELEMENT	RUNNING TIME
28:21		LOGO: AMERICAN TOP 40 STATION MENTIONS ✓ #35 RUNNING UP THAT HILL (A) Kate Bush ✓ #34 GIRLS ARE MORE FUN (A) Ray Parker Jr.	09:17
37:38		NETWORK SPOT: MEM English Leather/County Line Cheese (OUT CUE) Jingle ends cold with... "...we're Beatrice."	30/30
38:38		LOCAL INSERT: PSH - mal news Promo - Promo 60	
39:38		LOGO: AMERICAN TOP 40 #33 WRAP HER UP (A) Elton John QL: MOST NUMBER ONES IN A ROW ✓ #32 SAY YOU, SAY ME (A) Lionel Richie	08:56
48:34		NETWORK SPOT: Ovaltine/Pontiac/Hershey-Reeses (OUT CUE) Voice out cold with... "...nice meeting you."	30/30 30
50:04		✓ LOGO: AMERICAN TOP 40 ✓ #31 SISTERS ARE DOING IT FOR THEMSELVES (A) Eurythmics and Aretha Franklin ✓ #30 AND WE DANCED (A) The Hooters	07:31
57:25		THEME UP AND UNDER WITH TALK UNIT ENDING AT: 57:35 THEME TO: 57:50	
57:50		LOCAL INSERT:	2:00
59:50		STATION I. D.: legal ad & forecast	:10

FORMAT AND COMMERCIAL CLOCK



Hour I

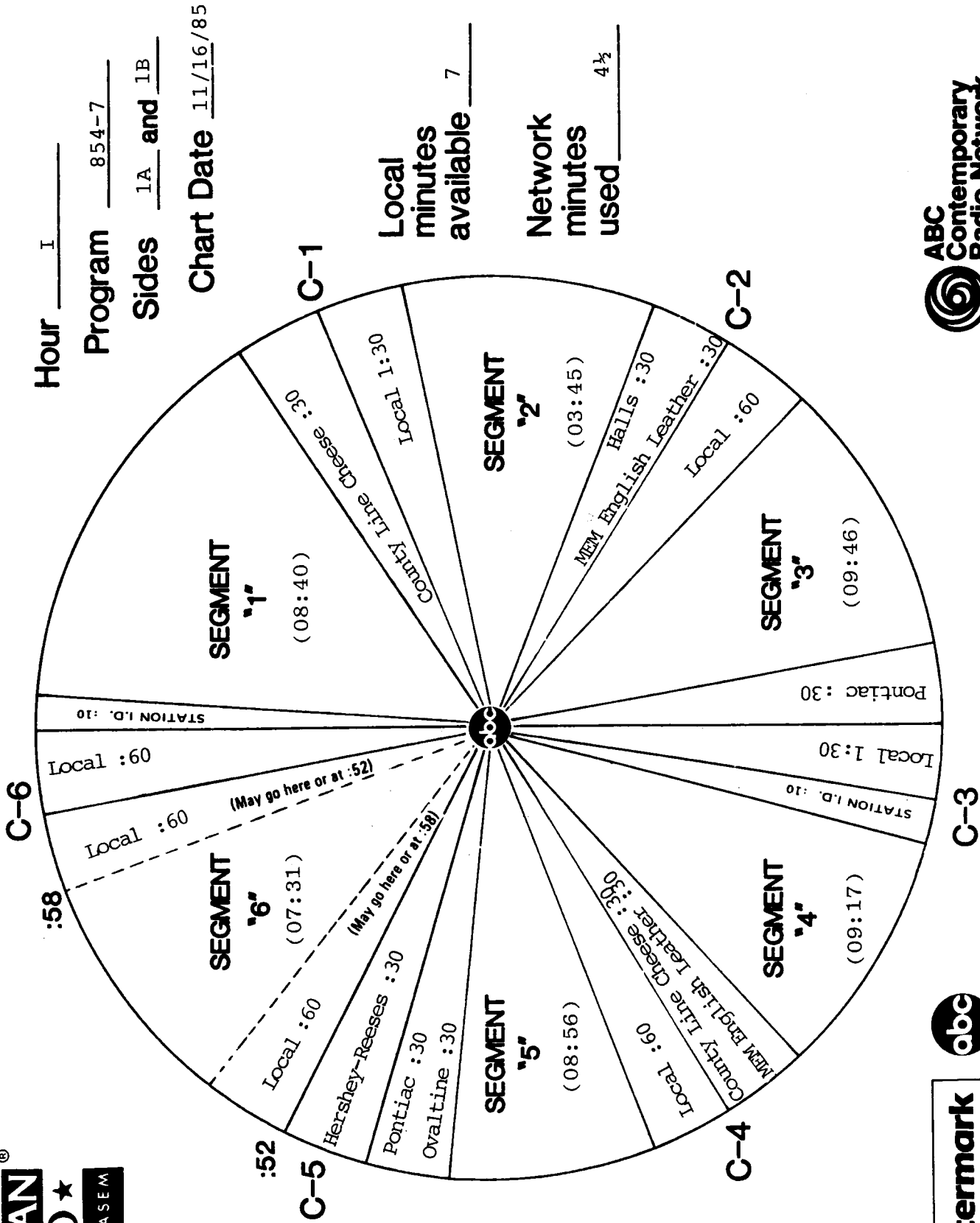
Program 854-7

Sides 1A and 1B

Chart Date 11/16/85

Local minutes available 7

Network minutes used 4 1/2





ABC Watermark



FOR WEEK ENDING: 11/16/85
CYCLE NO. 854 PROGRAM 7 OF 13
DISC & HALF HOUR NO. 2A PAGE NO. 3

3575 Cahuenga Blvd. W., Suite 555, Los Angeles, CA 90068

ABC Contemporary Radio Network

SCHEDULED START TIME	ACTUAL TIME	ELEMENT	RUNNING TIME
00:00		THEME AND OPENING OF PART II	04:12
		#29 OH SHEILA (B) Ready For The World	
04:12		NETWORK SPOT: Halls Cough Drops (OUT CUE) Voice out cold with... "...only as directed." C-1	:30
04:42		LOCAL INSERT: Dangle auto body - RP Foundation	1:30
06:12		LOGO: AMERICAN TOP 40, then Casey I.D.'s himself #28 FORTRESS AROUND YOUR HEART (B) Sting LDD: NEVER SURRENDER (A) Corey Hart PSA	10:56
17:08		NETWORK SPOT: Pontiac/County Line Cheese (OUT CUE) Jingle ends cold with... "...we're Beatrice." C-2	30/30
18:08		LOCAL INSERT: Retail association - Quickstop	:60
19:08		LOGO: AMERICAN TOP 40 #27 I'M GONNA TEAR YOUR PLAYHOUSE DOWN (B) Paul Young #26 SO IN LOVE (A&B) Orchestral Manoeuvres In The Dark Promo	08:30
27:38		NETWORK SPOT: Ford Parts & Service (OUT CUE) Voice out cold with... "...quality care." C-3	:30
28:08		LOCAL INSERT: STATION I. D.: PSA - Forecast	1:30
29:38			:10



ABC Watermark



FOR WEEK ENDING: 11/16/85
 CYCLE NO. 854 PROGRAM 7 OF 13
 DISC & HALF HOUR NO. 2B
 PAGE NO. 4

3575 Cahuenga Blvd. W., Suite 555, Los Angeles, CA 90068

ABC Contemporary Radio Network

SCHEDULED START TIME	ACTUAL TIME	ELEMENT	RUNNING TIME
29:48		LOGO: AMERICAN TOP 40 STATION MENTIONS #25 PERFECT WAY (A) Scritti Politti CORRECTION: NUMBER ONE SONGS MENTIONING ALCOHOLIC BEVERAGES #24 PARTY ALL THE TIME (A) Eddie Murphy	09:29
39:17		C-4 NETWORK SPOT: Greyhound/Halls Cough Drops (OUT CUE) Voice out cold with... "...only as directed."	30/30
40:17		LOCAL INSERT: <i>Kitchen County #1 -</i>	:60
41:17		LOGO: AMERICAN TOP 40, <u>then Casey I.D. himself</u> #23 I MISS YOU (A) Klymaxx	04:46
46:03		C-5 NETWORK SPOT: Pontiac/ABC Entertainment/County Line Cheese (OUT CUE) Jingle ends cold with... "...we're Beatrice."	30/30 30
47:33		Local Insert: <i>Quality Markets</i>	:30
48:03		LOGO: AMERICAN TOP 40 #22 ALIVE & KICKING (A) Simple Minds #21 SOUL KISS (B) Olivia Newton-John	09:24
57:17		THEME UP AND UNDER WITH TALK UNIT ENDING AT: 57:27 THEME TO: 57:50	
57:50		LOCAL INSERT:	2:00
59:50		STATION I. D.: <i>Forecast legal I.D.</i>	:10

FORMAT AND COMMERCIAL CLOCK

AMERICAN
★ TOP40 ★
 WITH CASEY KASEM

Hour II

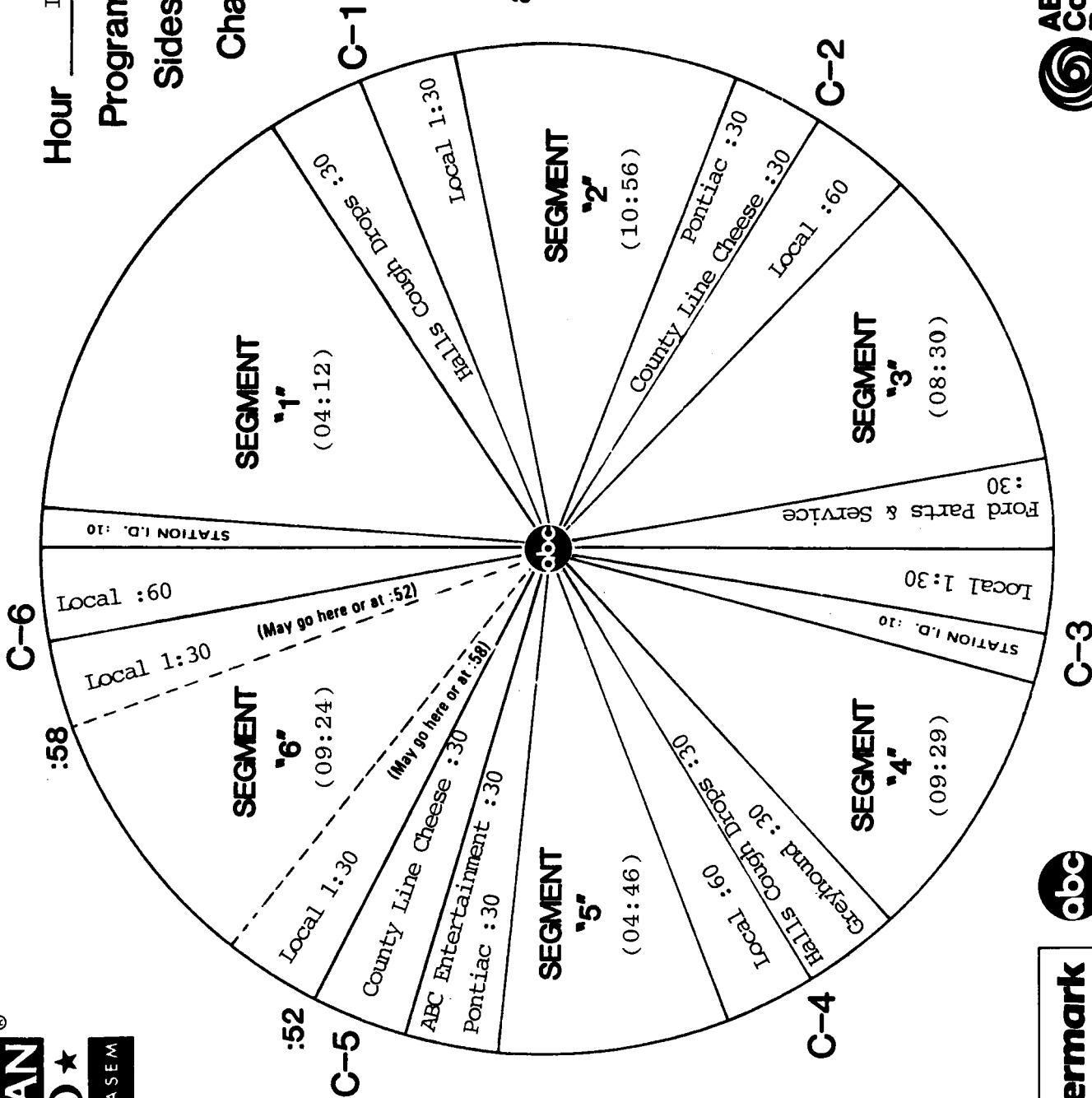
Program 854-7

Sides 2A and 2B

Chart Date 11/16/85

Local minutes available 7½

Network minutes used 4½



ABC Watermark



ABC Watermark



FOR WEEK ENDING: 11/16/85
CYCLE NO. 854 PROGRAM 7 OF 13
DISC & HALF HOUR NO. 3A
PAGE NO. 5

3575 Cahuenga Blvd. W., Suite 555, Los Angeles, CA 90068

ABC Contemporary Radio Network

SCHEDULED START TIME	ACTUAL TIME	ELEMENT	RUNNING TIME
00:00		THEME AND OPENING OF PART III #20 LOVIN' EVERY MINUTE OF IT (A) Loverboy #19 SLEEPING BAG (B) Z Z Top	07:34
07:34		NETWORK SPOT: Polaroid (OUT CUE) Voice out cold with... "...and where prohibited." <i>PS17</i>	:60
08:34		LOCAL INSERT: <i>Keir Cole Boutique - Strand Brewery</i>	:60
09:34		LOGO: AMERICAN TOP 40, then Casey I.D.'s himself #18 ELECTION DAY (B) Arcadia	04:45
14:19		NETWORK SPOT: Pontiac/Sunbeam (OUT CUE) Voice out cold with... "...from Sunbeam." <i>C-2</i>	30/30
15:19		LOCAL INSERT: <i>Kane Retail Merchants</i>	:60
16:19		LOGO: AMERICAN TOP 40 #17 ONE OF THE LIVING (A) Tina Turner #16 ONE NIGHT LOVE AFFAIR (B) Bryan Adams	09:04
25:23		NETWORK SPOT: Ovaltine (OUT CUE) Jingle fades after... "...available in sugarfree." <i>C-3</i>	:30
25:53		LOCAL INSERT: <i>Strand Brewery</i>	1:30
27:23		STATION I. D.: <i>PSA - Over for Side 3B</i>	:10



ABC Watermark



FOR WEEK ENDING: 11/16/85
CYCLE NO. 854 PROGRAM 7 OF 13
DISC & HALF HOUR NO. 3B
PAGE NO. 6

3575 Cahuenga Blvd. W., Suite 555, Los Angeles, CA 90068

ABC Contemporary Radio Network

SCHEDULED START TIME	ACTUAL TIME	ELEMENT	RUNNING TIME
27:33		LOGO: AMERICAN TOP 40 #15 LOVE THEME FROM ST. ELMO'S FIRE (B) David Foster #14 SAVING ALL MY LOVE FOR YOU (A&B) Whitney Houston	07:32
35:05		C-4 NETWORK SPOT: Pontiac/Dry & Clear (OUT CUE) Voice out cold with... "...on acne breakouts."	30/30
36:05		LOCAL INSERT: <i>Shady Point - male news Promo</i>	:60
37:05		LOGO: AMERICAN TOP 40 STATION MENTIONS #13 TAKE ON ME (B) A-Ha	03:51
40:56		C-5 NETWORK SPOT: Hershey-Reeses/County Line Cheese/Ovaltine (OUT CUE) Jingle fades after... "...available in sugarfree."	30/30 30
42:26		Local Insert: <i>dun-berg Furniture - 200k</i>	:30
42:56		LOGO: AMERICAN TOP 40 #12 YOU ARE MY LADY (A) Freddie Jackson #11 WHO'S ZOOMIN' WHO (A&B) Aretha Franklin #10 LAY YOUR HANDS ON ME (A) The Thompson Twins	14:45
57:32		THEME UP AND UNDER WITH TALK UNIT ENDING AT: 57:41 THEME TO: 57:50	
57:50		C-6 LOCAL INSERT:	2:00
59:50		STATION I. D.: <i>Forecast & legal 1/2</i>	:10

AT-40 promo

FORMAT AND COMMERCIAL CLOCK



Hour III

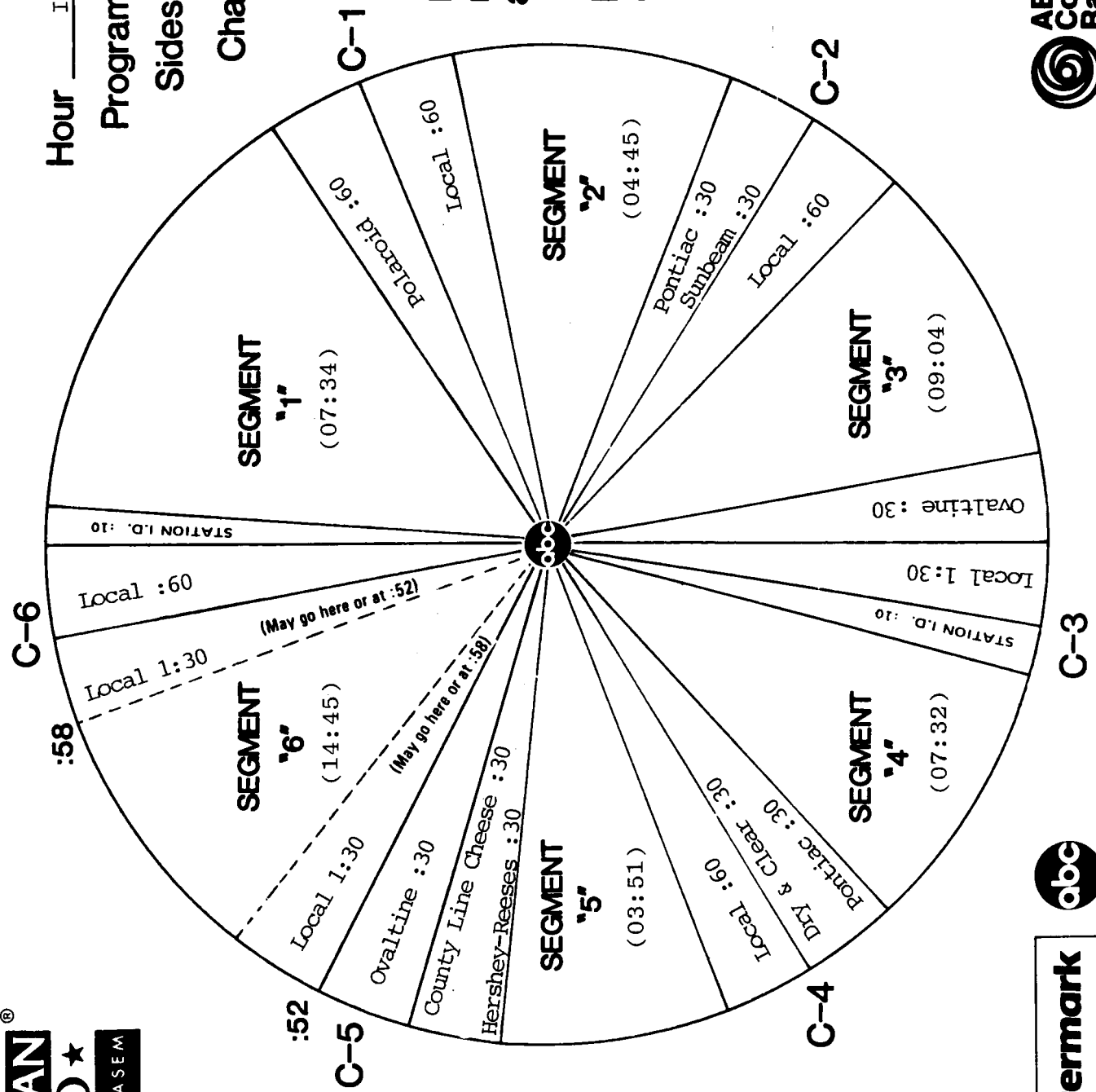
Program 854-7

Sides 3A and 3B

Chart Date 11/16/85

Local minutes available 7

Network minutes used 5





ABC Watermark



FOR WEEK ENDING: 11/16/85
CYCLE NO. 854 PROGRAM 7 OF 13
DISC & HALF HOUR NO. 4A PAGE NO. 7

3575 Cahuenga Blvd. W., Suite 555, Los Angeles, CA 90068

ABC Contemporary Radio Network

SCHEDULED START TIME	ACTUAL TIME	ELEMENT	RUNNING TIME
00:00		✓ THEME AND OPENING OF PART IV ✓ STATION WELCOMES ✓ #9 BE NEAR ME (B) ABC	03:43
03:43		✓ NETWORK SPOT: Polaroid (OUT CUE) Voice out cold with... C-1 "...and where prohibited."	:60
04:43		✓ LOCAL INSERT: <i>Quick stop #2 - SADD</i>	:60
05:43		✓ LOGO: AMERICAN TOP 40 #8 NEVER (A) Heart ✓ YDD: NEVER KNEW LOVE LIKE THIS BEFORE (B) Stephanie Mills	08:40
14:23		✓ NETWORK SPOT: Pontiac/Halls Cough Drops (OUT CUE) Voice out cold with... C-2 "...only as directed."	30/30
15:23		✓ LOCAL INSERT: <i>Kitchen Country #2</i>	:60
16:23		✓ LOGO: AMERICAN TOP 40 STATION MENTIONS #7 BROKEN WINGS (B) Mr. Mister #6 SEPARATE LIVES (LOVE THEME FROM WHITE NIGHTS) (A&B) Phil Collins/Marilyn Martin	10:23
26:46		✓ NETWORK SPOT: Ovaltine (OUT CUE) Jingle fades after... C-3 "...available in sugarfree."	:30
27:16 28:46		✓ LOCAL INSERT: STATION I. D.: <i>Retail Association - weather</i>	1:30 :10



ABC Watermark



FOR WEEK ENDING: 11/16/85
CYCLE NO. 854 PROGRAM 7 OF 13
DISC & HALF HOUR NO. 4B
PAGE NO. 8

3575 Cahuenga Blvd. W., Suite 555, Los Angeles, CA 90068

ABC Contemporary Radio Network

SCHEDULED START TIME	ACTUAL TIME	ELEMENT	RUNNING TIME
28:56		<input checked="" type="checkbox"/> LOGO: AMERICAN TOP 40 <input checked="" type="checkbox"/> #5 PART TIME LOVER (A) Stevie Wonder <input checked="" type="checkbox"/> #4 HEAD OVER HEELS (A) Tears For Fears	08:19
37:15		<input checked="" type="checkbox"/> NETWORK SPOT: ^{C-4} Pontiac/MEM English Leather (OUT CUE) Jingle fades after... "...talk about football."	30/30
38:15		<input checked="" type="checkbox"/> LOCAL INSERT: <i>Dangelo autobody - Rock motors</i>	:60
39:15		<input checked="" type="checkbox"/> LOGO: AMERICAN TOP 40 <input checked="" type="checkbox"/> #3 MIAMI VICE THEME (A) Jan Hammer	02:52
42:07		<input checked="" type="checkbox"/> NETWORK SPOT: ^{C-5} Greyhound/Sunbeam/Ford Parts & Service (OUT CUE) Voice out cold with... "...quality care."	30/30 30
43:37		<input checked="" type="checkbox"/> Local Insert: <i>PSA - AT-40 Promo</i>	:30
44:07		<input checked="" type="checkbox"/> LOGO: AMERICAN TOP 40, <u>then Casey I.D.'s himself</u> <input checked="" type="checkbox"/> #2 YOU BELONG TO THE CITY (A) Glenn Frey <input checked="" type="checkbox"/> #1 <u>WE BUILT THIS CITY</u> (A&B) Starship	13:35
56:52		THEME UP AND UNDER WITH TALK UNIT ENDING AT: 57:42 THEME TO: 57:50	
57:50		<input checked="" type="checkbox"/> LOCAL INSERT: ^{C-6}	2:00
59:50		<input checked="" type="checkbox"/> STATION I. D.: <i>News-96 5 legal I.D.</i>	:10

FORMAT AND COMMERCIAL CLOCK

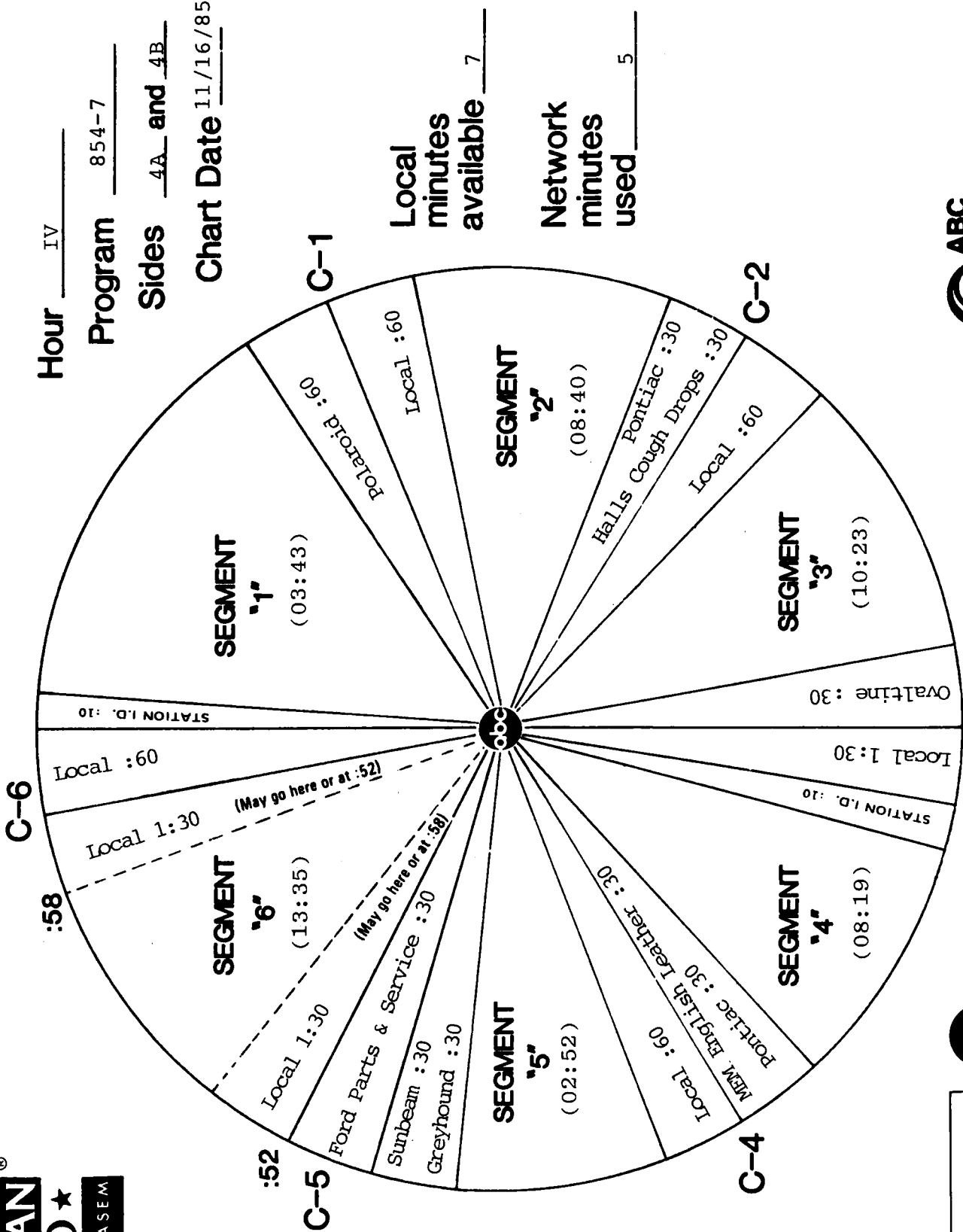


Hour IV

Program 854-7

Sides 4A and 4B

Chart Date 11/16/85



Local minutes available 7

Network minutes used 5



ABC Watermark

TOPICAL PROMOS



AT40 PROMOS FOR SHOW #854-7 ARE LOCATED AT 1A.

DO NOT USE AFTER NOVEMBER 17, 1985.

1) HERE COMES MR. MURPHY (:21)

Hi, this is Casey Kasem. Last week on American Top 40, one of the biggest Box-Office Stars from the movies debuted in our countdown with his first hit song. Funnyman and super-talent Eddie Murphy came in at number 35 with "PARTY ALL THE TIME". How high will Eddie take his party on the Official Billboard survey? We'll check that and all the chart action on American Top 40.

2) THE DEBUT GAME (:22)

Hi, this is Casey Kasem. Among the hottest new hits with debut potential this week on American Top 40 are: "SMALL TOWN" by John Cougar Mellencamp the latest from the Cars, "TONIGHT SHE COMES"...and "WALK OF LIFE" by Dire Straits. If you're buying them and Deejays are playing them, the Official Billboard survey will tell us so. And they could debut this week on American Top 40.

3) VICE MUSIC (:30)

Hi, this is Casey Kasem. Last week on American Top 40, the number one album in the U.S.A. was "THE SOUNDTRACK FROM MIAMI VICE." And the theme song from Miami Vice, by Jan Hammer, was number one on the Official Billboard Pop survey. And get this: climbing fast, from number six to number four was "YOU BELONG TO THE CITY" by Glenn Frey, also from the "MIAMI VICE SOUNDTRACK." Will this second "MIAMI VICE" hit follow the theme song to the top? We'll check that out and all the action on American Top 40.

4) MEANWHILE ON THE OTHER CHARTS (:27)

Hi, this is Casey Kasem. Here's how things stood last week on the Tops of the Billboard charts. Number one on the soul chart was "PART TIME LOVER" by Stevie Wonder. Number one on the country chart was "CAN'T KEEP A GOOD MAN DOWN" by Alabama. Number one on the album chart was the soundtrack from MIAMI VICE". And number one on the pop chart was Jan Hammer's theme from "MIAMI VICE". What will the number one song be this week on the Official Billboard charts? We'll find out on American Top 40.